

NDB DXB <b>385</b>	APP CRS <b>354°</b>	Rwy ldg TDZE Apt Elev	<b>5494</b> <b>197</b> <b>202</b>
-----------------------	------------------------	-----------------------------	-----------------------------------------

# NDB RWY 36

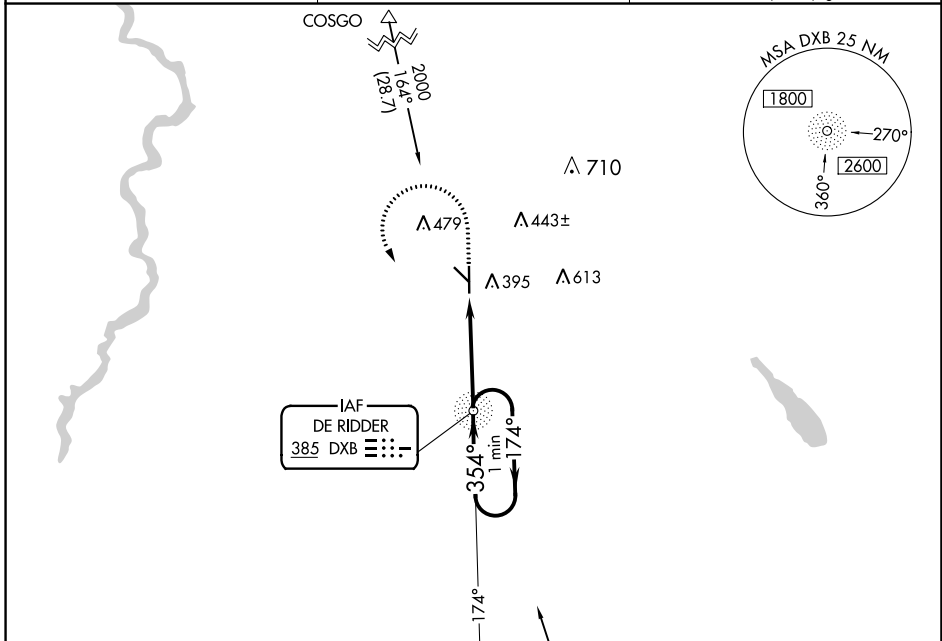
BEAUREGARD RGNL (DRI)

**NA** Inoperative table does not apply. Visibility reduction by helicopters NA. When local altimeter setting not received, use Fort Polk altimeter setting and increase all MDAs 60 feet and S-36 visibility Cat D 1/2 SM and Circling Cats C/D 1/4 SM.

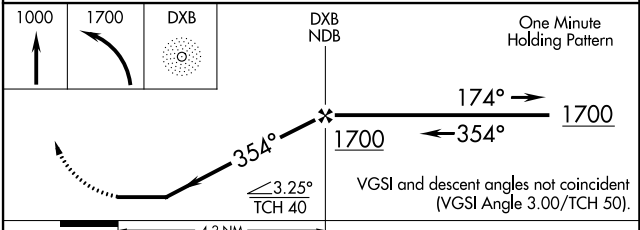
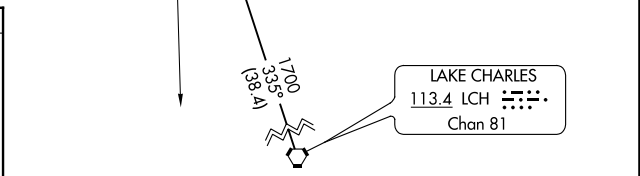
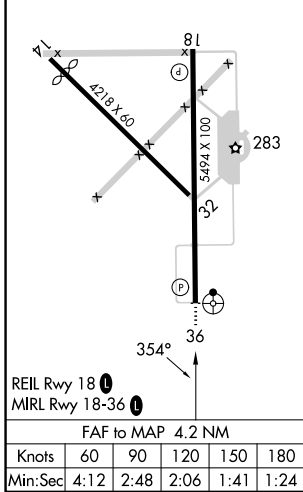
**ODALS**

**MISSED APPROACH:** Climb to 1000 then climbing left turn to 1700 direct DXB NDB and hold.

AWOS-3PT <b>118.225</b>	POLK APP CON <b>123.7 261.3</b>	UNICOM <b>122.8 (CTAF) 0</b>
----------------------------	------------------------------------	---------------------------------



ELEV 202	TDZE 197
----------	----------



CATEGORY	A	B	C	D
S-36	700-1	503 (500-1)	700-1½	503 (500-1½)
CIRCLING	720-1	518 (600-1)	780-1½	1000-2½ 578 (600-1½) 798 (800-2½)

SC-4, 13 JUN 2024 to 11 JUL 2024

SC-4, 13 JUN 2024 to 11 JUL 2024