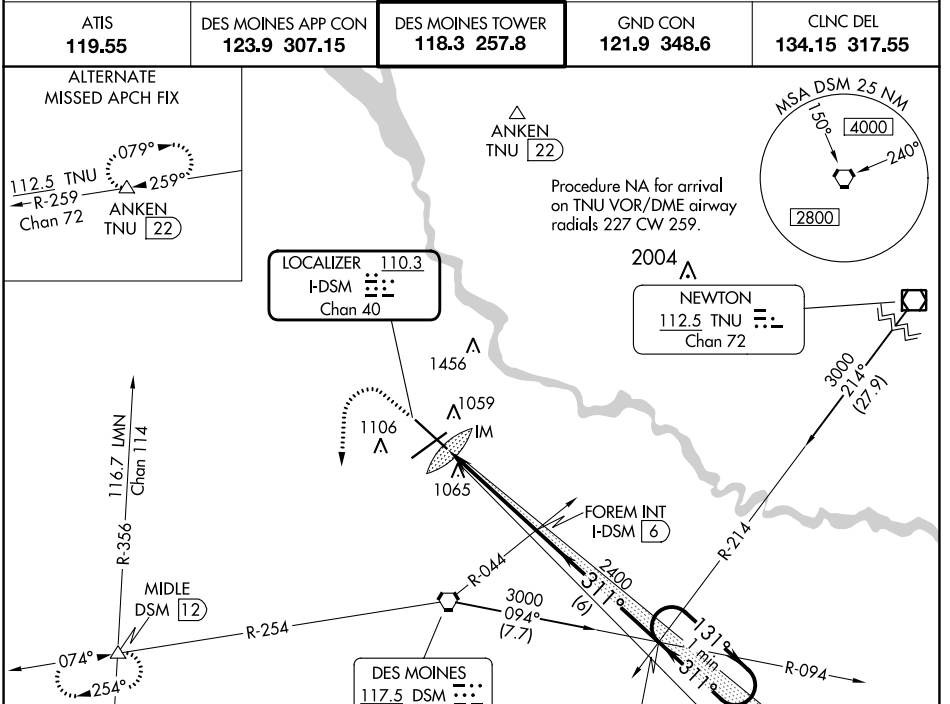


LOC/DME I-DSM <b>110.3</b> Chan 40	APP CRS <b>311°</b>	Rwy ldg TDZE Apt Elev <b>9001</b> <b>958</b> <b>958</b>
--	------------------------	--

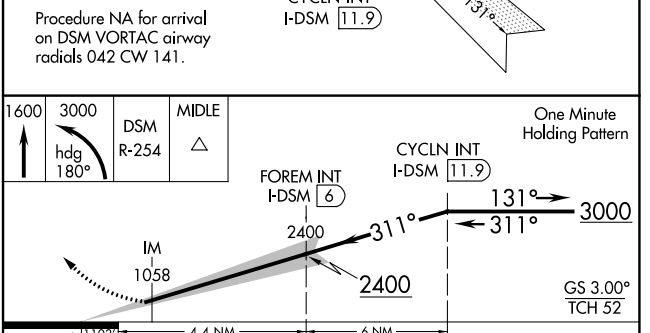
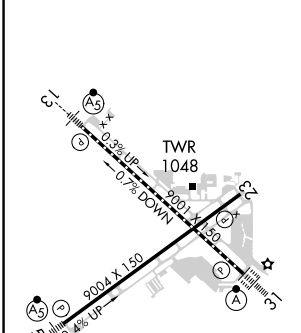
# ILS RWY 31 (CAT II & III)

DES MOINES INTL (DSM)

<b>ATIS</b> <b>119.55</b>		<b>DES MOINES APP CON</b> <b>123.9 307.15</b>		<b>DES MOINES TOWER</b> <b>118.3 257.8</b>		<b>GND CON</b> <b>121.9 348.6</b>		<b>CLNC DEL</b> <b>134.15 317.55</b>	
------------------------------	--	--	--	---	--	--------------------------------------	--	---	--



ELEV 958	<b>D</b>	TDZE 958
----------	----------	----------



CATEGORY	A	B	C	D
S-ILS 31	CAT II RA 101/12		100 DA 1058	
S-ILS 31	CAT III RVR 06			

## CATEGORY II & III ILS - SPECIAL AIRCREW & AIRCRAFT CERTIFICATION REQUIRED

REIL Rwy 5 and 23  
TDZ/CL Rwy 31  
HIRL Rwy 13-31 and 5-23

NC-3, 13 JUN 2024 to 11 JUL 2024

NC-3, 13 JUN 2024 to 11 JUL 2024