


LOC/DME I-DWW <b>111.5</b> Chan 52	APP CRS <b>053°</b>	Rwy Idg TDZE Apt Elev	<b>9004</b> <b>931</b> <b>958</b>
--	------------------------	-----------------------------	---

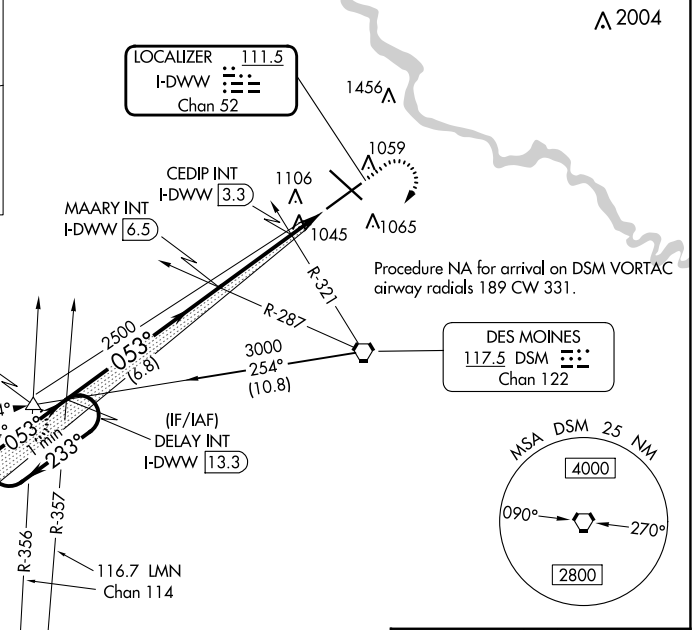
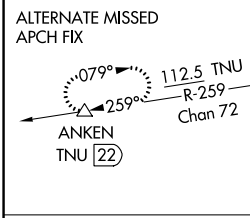
# ILS or LOC RWY 5

DES MOINES INTL (DSM)

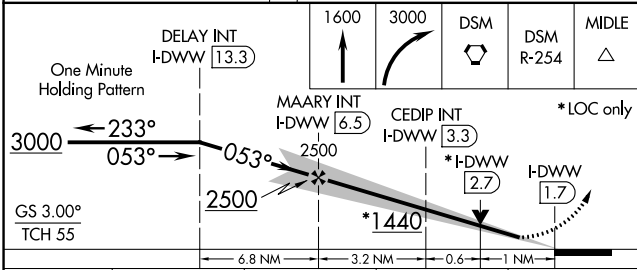
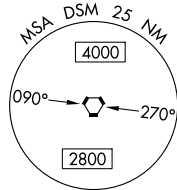
**▼** For inop ALS, increase S-LOC 5 Cats C and D visibility to 1 3/8 SM and CEDIP fix minimums Cats C and D visibility to RVR 5500.  
**▲** Autopilot coupled approach NA below 1256 MSL.  
 #RVR 1800 authorized with use of FD or AP or HUD to DA.

**MALS**  
  
**MISSED APPROACH:** Climb to 1600 then climbing right turn to 3000 direct DSM VORTAC then on DSM VORTAC R-254 to MIDDLE INT/DSM 12 DME and hold.

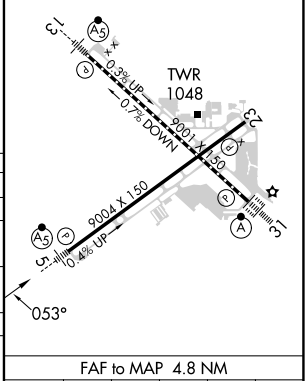
ATIS <b>119.55</b>	DES MOINES APP CON <b>123.9 307.15</b>	DES MOINES TOWER <b>118.3 257.8</b>	GND CON <b>121.9 348.6</b>	CLNC DEL <b>134.15 317.55</b>
-----------------------	---	--	-------------------------------	----------------------------------



DES MOINES  
**117.5** DSM  
 Chan 122



ELEV 958	<b>D</b> TDZE 931
REIL Rvys 5 and 23 TDZ/CL Rwy 31	
HIRL Rvys 13-31 and 5-23	



CATEGORY	A	B	C	D
S-ILS 5 #	1131/24		200 (200-1/2)	
S-LOC 5	1440/24	509 (500-1/2)		1440/55 509 (500-1)
<b>C</b> CIRCLING	1440-1	482 (500-1)		1600-1 3/4 802 (900-2 1/2)
CEDIP FIX MINIMUMS (DUAL VOR RECEIVERS OR DME REQUIRED)				
S-LOC 5	1300/24	369 (400-1/2)		1300/35 369 (400-3/4)
<b>C</b> CIRCLING	1420-1	462 (500-1)		1600-1 3/4 802 (900-2 1/2)

FAF to MAP 4.8 NM					
Knots	60	90	120	150	180
Min:Sec	4:48	3:12	2:24	1:55	1:36

NC-3, 13 JUN 2024 to 11 JUL 2024

NC-3, 13 JUN 2024 to 11 JUL 2024