

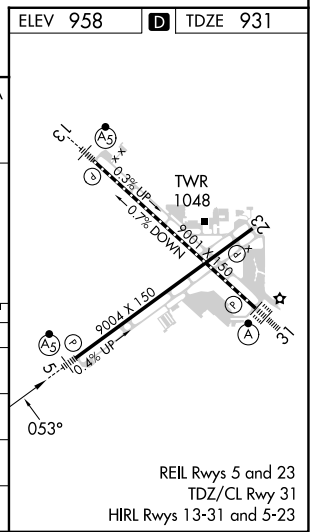
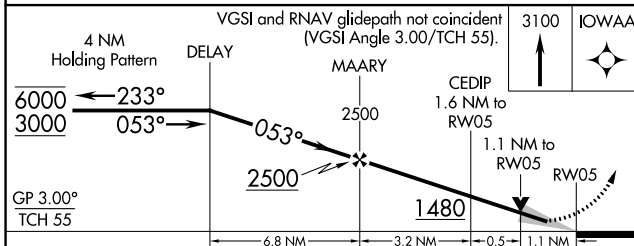
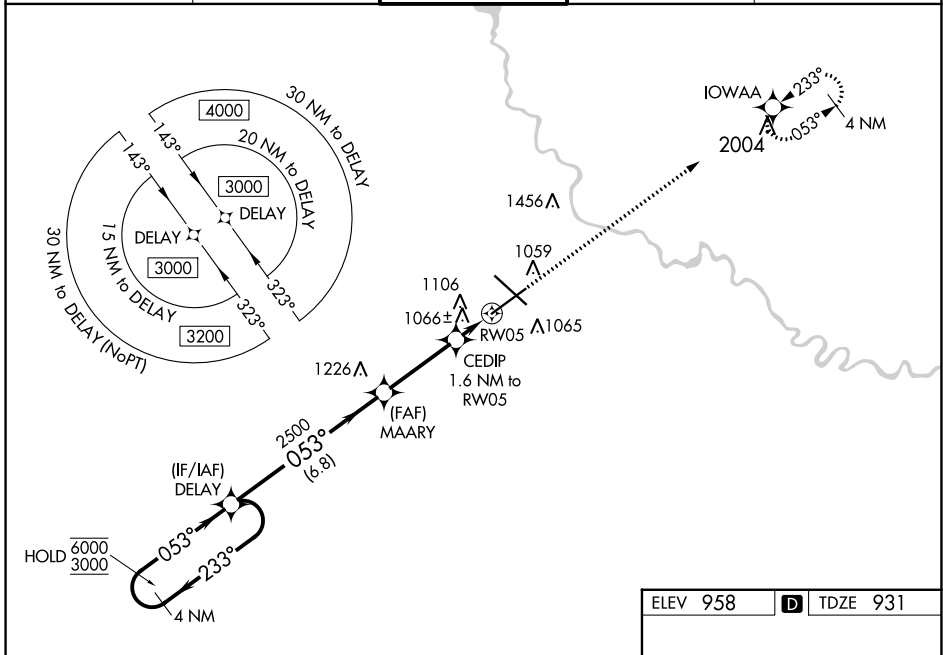
WAAS CH <b>69202</b> <b>W05A</b>	APP CRS <b>053°</b>	Rwy Idg <b>9004</b> TDZE <b>931</b> Apt Elev <b>958</b>
--	------------------------	---

# RNAV (GPS) RWY 5

DES MOINES INTL (DSM)

RNP APCH - GPS.	MALSR	MISSED APPROACH: Climb to 3100 direct IOWAA and hold.
<p><b>⚠</b> For uncompensated Baro-VNAV systems, LNAV/VNAV NA below -22°C or above 54°C. For inop ALS, increase LNAV/VNAV all Cats visibility to RVR 4500. *RVR 1800 authorized with use of FD or AP or HUD to DA (NA when using Ankeny Rgnl altimeter setting).</p>		

ATIS <b>119.55</b>	DES MOINES APP CON <b>123.9 307.15</b>	DES MOINES TOWER <b>118.3 257.8</b>	GND CON <b>121.9 348.6</b>	CLNC DEL <b>134.15 317.55</b>
-----------------------	---	--	-------------------------------	----------------------------------



CATEGORY	A	B	C	D
LPV DA*		1131/24	200 (200-1/2)	
LNAV/VNAV DA		1247/24	316 (300-1/2)	
LNAV MDA	1320/24	389 (400-1/2)	1320/35	389 (400-5/8)
<b>C</b> CIRCLING	1420-1	462 (500-1)	1600-1 3/4 642 (700-1 3/4)	1760-2 1/2 802 (900-2 1/2)

NC-3, 13 JUN 2024 to 11 JUL 2024

NC-3, 13 JUN 2024 to 11 JUL 2024