

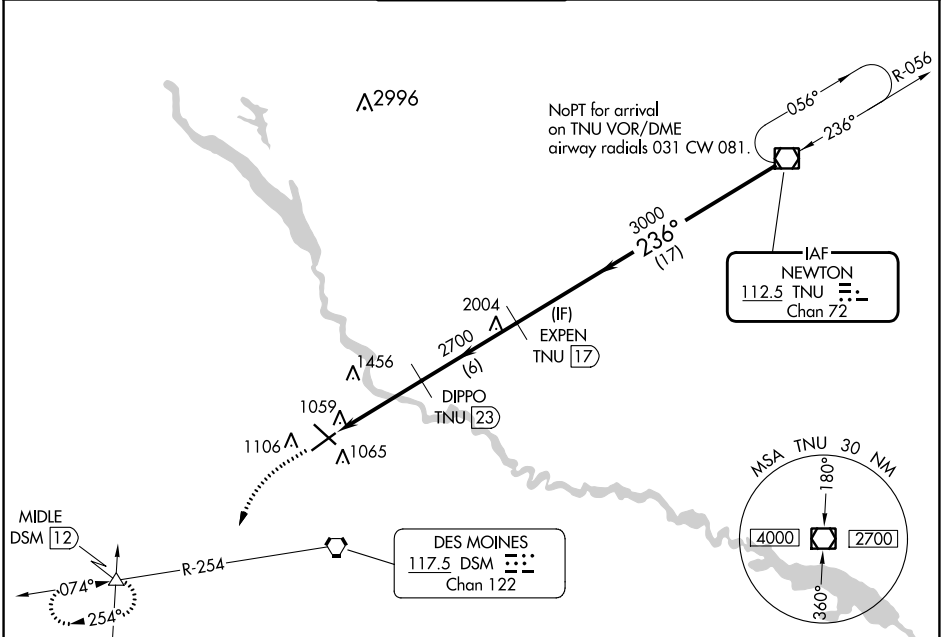
VOR/DME TNU <b>112.5</b> Chan <b>72</b>	APP CRS <b>236°</b>	Rwy Idg TDZE Apt Elev	<b>9004</b> <b>939</b> <b>958</b>
---	------------------------	-----------------------------	---

# VOR RWY 23

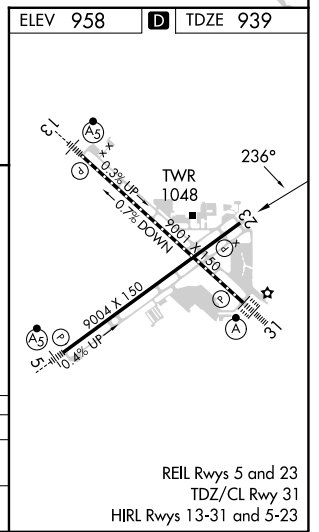
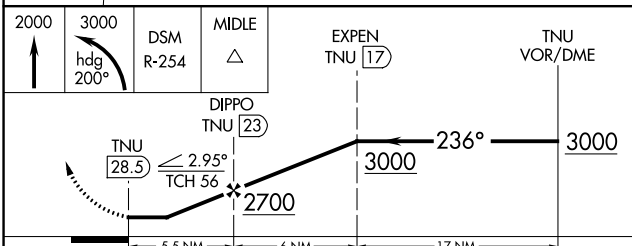
DES MOINES INTL (DSM)

DME required.	MISSED APPROACH: Climb to 2000 then climbing left turn to 3000 on heading 200° and on DSM VORTAC R-254 direct MIDLE INT/DSM 12 DME and hold.
Rwy 23 helicopter visibility reduction below 3/4 SM NA.	

ATIS <b>119.55</b>	DES MOINES APP CON <b>123.9 307.15</b>	DES MOINES TOWER <b>118.3 257.8</b>	GND CON <b>121.9 348.6</b>	CLNC DEL <b>134.15 317.55</b>
-----------------------	---	--	-------------------------------	----------------------------------



ELEV 958	<b>D</b> TDZE 939
----------	-------------------



CATEGORY	A	B	C	D
S-23	1720-1 781 (800-1)	1720-1 1/4 781 (800-1 1/4)	1720-2 1/2	781 (800-2 1/2)
CIRCLING	1720-1 762 (800-1)	1720-1 1/4 762 (800-1 1/4)	1720-2 1/2 762 (800-2 1/2)	1760-2 1/2 802 (900-2 1/2)

NC-3, 13 JUN 2024 to 11 JUL 2024

NC-3, 13 JUN 2024 to 11 JUL 2024

REIL Rwy 5 and 23  
TDZ/CL Rwy 31  
HIRL Rwy 13-31 and 5-23