

(CLVIN3.CLVIN) 24137

AL-119 (FAA)

DETROIT METRO WAYNE COUNTY (DTW)

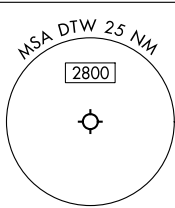
# CLVIN THREE DEPARTURE (RNAV) Transition Routes

DETROIT, MICHIGAN

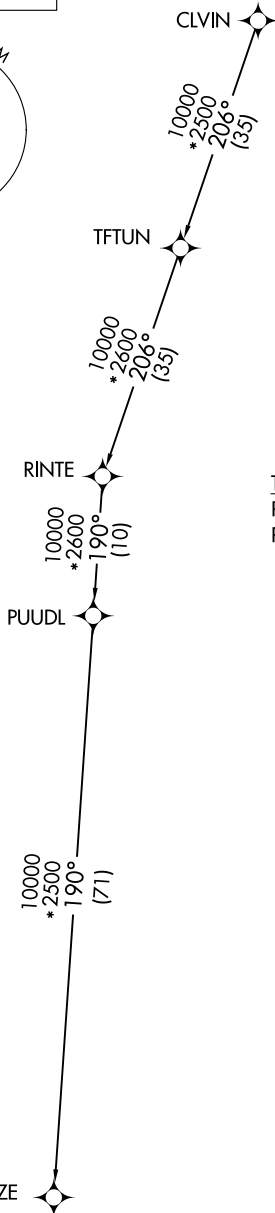
**TOP ALTITUDE:  
17000**

RNAV 1 - DME/DME/IRU or GPS.

RADAR required.



DETROIT DEP CON  
 125.525 284.0 (Rwys 4L/R, 22L/R)  
 132.025 284.0 (Rwys 3L/R, 21L/R, 27L/R)  
 D-ATIS 118.125  
 CLNC DEL 120.65  
 CPDLC  
 GND CON  
 121.8 (NW) 119.45 (NE)  
 132.725 (SW) 119.25 (SE)  
 METRO TOWER  
 118.4 317.725 (Rwys 3L/R, 21L/R, 27R)  
 128.75 317.725 (Rwy 27L)  
 135.0 317.725 (Rwy 4L/R, 22L/R)



### TAKEOFF MINIMUMS:

Rwys 27L/R: Standard.

Rwys 3L/R, 4L/R, 21L/R, 22L/R:

Standard with minimum climb of 500'/NM to 1146.

NOTE: Turbojet departures at/above 10000, maintain 280K until advised by ATC.

NOTE: Chart not to scale.

(CONTINUED ON FOLLOWING PAGE)

CLVIN THREE DEPARTURE (RNAV) (CLVIN3.CLVIN) 16MAY24

Transition Routes

DETROIT, MICHIGAN

DETROIT METRO WAYNE COUNTY (DTW)

EC-1, 13 JUN 2024 to 11 JUL 2024