

DETROIT, MICHIGAN

AL-119 (FAA)

21168

# ILS PRM RWY 4R (CLOSE PARALLEL)

DETROIT METRO WAYNE COUNTY (DTW)

LOC/DME I-DTW <b>110.7</b>	APP CRS <b>036°</b>	Rwy Idg <b>11494</b>
Chan <b>44</b>		TDZE <b>640</b>
		Apt Elev <b>645</b>

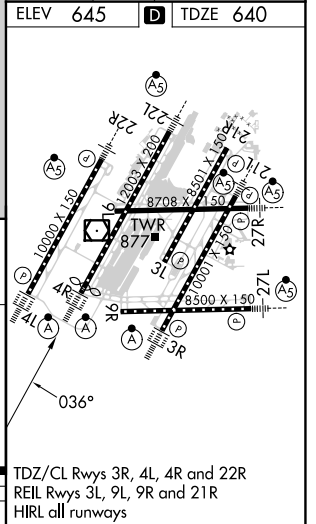
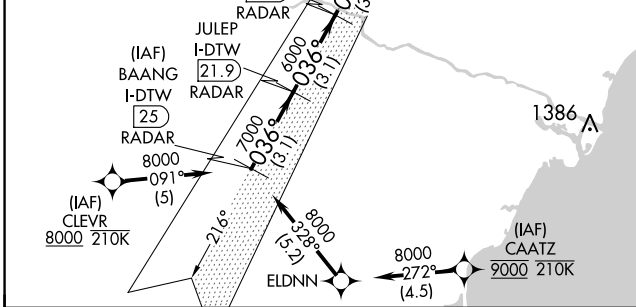
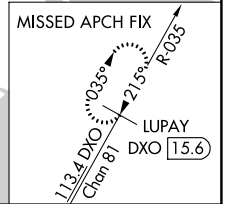
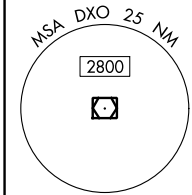
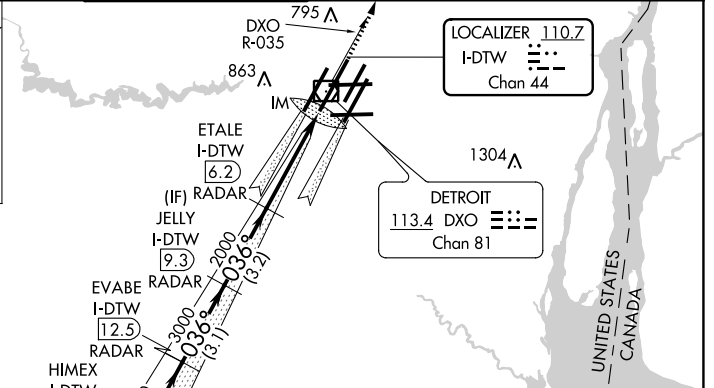
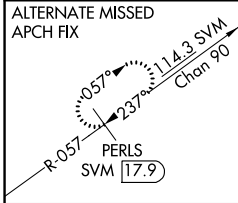
RNAV 1-GPS.  
DME or RADAR required. CLEVR, CAATZ and ELDNN: RNAV 1-DME/DME/IRU or GPS required. Aircraft not DME/DME/IRU or GPS equipped- RADAR required for procedure entry.

▼ Simultaneous approach authorized. Use of FD or AP required during simultaneous operations. Dual VHF Comm required. See additional requirements on AAUP. Procedure NA when glideslope not available.

ALSF-2

MISSED APPROACH:  
Climb to 4000 on DXO  
VOR/DME R-035 to  
LUPAY/DXO VOR/DME  
15.6 DME and hold.

D-ATIS <b>133.675</b>	DETROIT APP CON <b>124.05 284.0</b>	METRO TOWER <b>128.125 317.725</b> <b>PRM 135.775</b>	GND CON <b>121.8</b> (NW) <b>119.45</b> (NE) <b>132.725</b> (SW) <b>119.25</b> (SE)	CLNC DEL <b>120.65</b>	CPDLC
--------------------------	--	---	---	---------------------------	-------



BAANG I-DTW 25 RADAR	JULEP I-DTW 21.9 RADAR	CULOP I-DTW 18.8 RADAR	HIMEX I-DTW 15.6 RADAR	EVABE I-DTW 12.5 RADAR	JELLY I-DTW 9.3 RADAR	ETALE I-DTW 6.2 RADAR	DXO R-035	LUPAY DXO 15.6	
8000	7000	6000	5000	4000	3000	2000	4000	4000	
GS 3.00° TCH 52									
CATEGORY	A		B		C		D		
S-ILS 4R	840/18		200 (200-1/2)						

DETROIT, MICHIGAN  
Amdt 3A 13SEP18

42°13'N-83°21'W

DETROIT METRO WAYNE COUNTY (DTW)

# ILS PRM RWY 4R (CLOSE PARALLEL)

EC-1, 13 JUN 2024 to 11 JUL 2024

EC-1, 13 JUN 2024 to 11 JUL 2024