

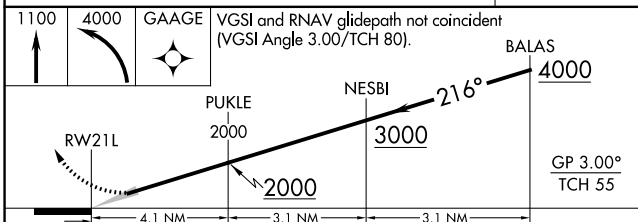
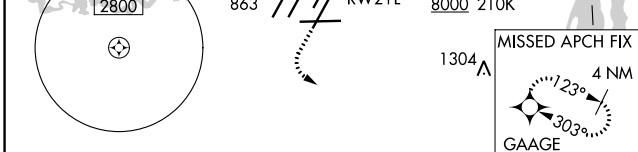
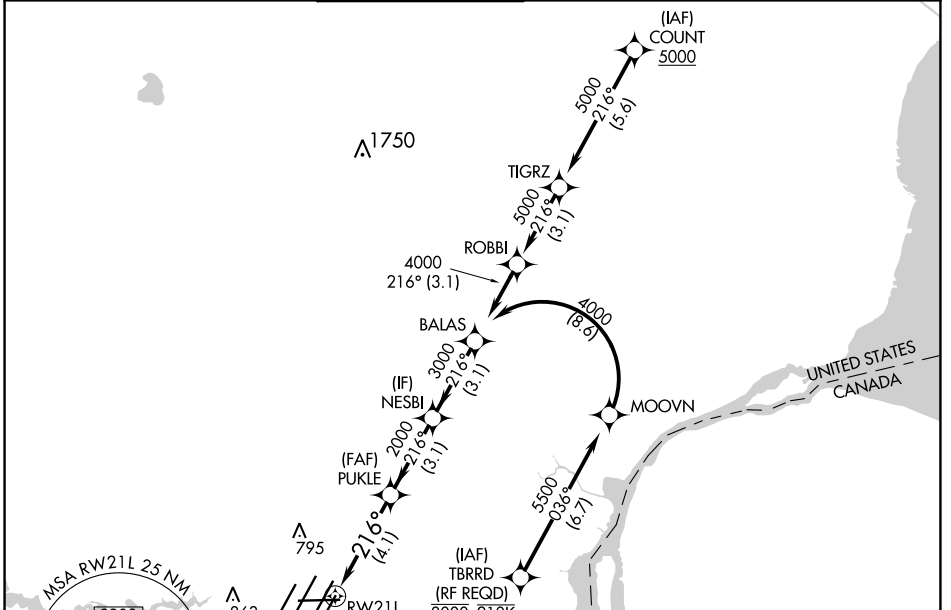
APP CRS	Rwy Idg	<b>10001</b>
<b>216°</b>	TDZE	<b>632</b>
	Apt Elev	<b>645</b>

# RNAV (RNP) W RWY 21L

DETROIT METRO WAYNE COUNTY (DTW)

RNP AR APCH.		MALSR	MISSED APPROACH: Climb to 1100 then climbing left turn to 4000 direct GAAGE and hold.
<p>▼ For uncompensated Baro-VNAV systems, procedure NA below -19°C or above 54°C. Simultaneous approach authorized. Use of FD or AP providing RNAV track guidance required during simultaneous operations.</p>			

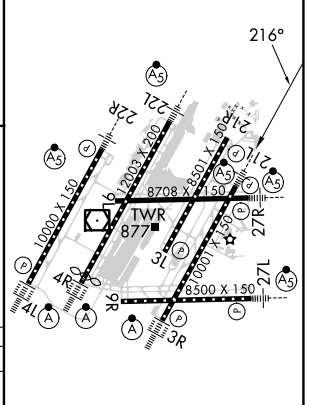
D-ATIS	DETROIT APP CON	METRO TOWER	GND CON	CLNC DEL	CPDLC
<b>133.675</b>	<b>125.15 284.0</b>	<b>118.4 317.725</b>	<b>121.8 (NW) 119.45 (NE) 132.725 (SW) 119.25 (SE)</b>	<b>120.65</b>	



CATEGORY	A	B	C	D
RNP 0.30 DA		1062/40	430 (500-¾)	

**AUTHORIZATION REQUIRED**

ELEV 645	<b>D</b>	TDZE 632
----------	----------	----------



HIRL all runways  
REIL Rwy 3L, 9L, 9R and 21R  
TDZ/CL Rwy 3R, 4L, 4R and 22R

EC-1, 13 JUN 2024 to 11 JUL 2024

EC-1, 13 JUN 2024 to 11 JUL 2024