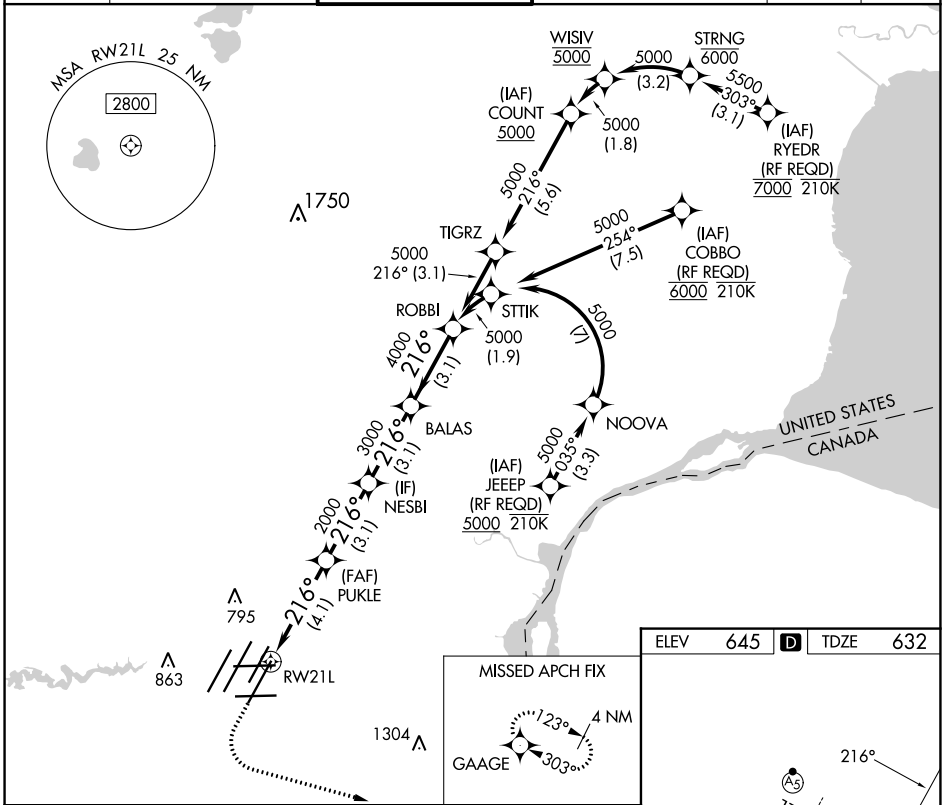


| | | |
|-------------|----------|--------------|
| APP CRS | Rwy Idg | 10001 |
| 216° | TDZE | 632 |
| | Apt Elev | 645 |

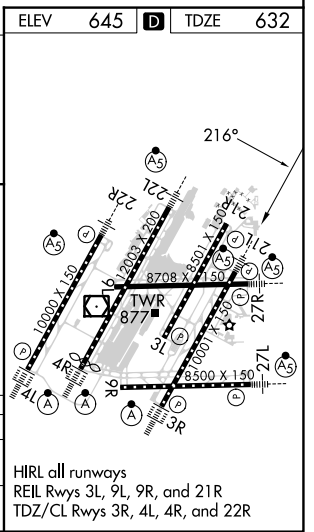
RNAV (RNP) X RWY 21L

DETROIT METRO WAYNE COUNTY (DTW)

| | | | | | |
|---|---------------------|----------------------|--|---|-------|
| RNP AR APCH. | | MALSR | | MISSED APPROACH: Climb to 1100 then climbing left turn to 4000 direct GAAGE and hold, continue climb-in-hold to 4000. | |
| <p>▼ Simultaneous approach authorized. Use of FD or AP providing RNAV track guidance required during simultaneous operations. For uncompensated Baro-VNAV systems, procedure NA below -1°C or above 54°C.</p> | | | | | |
| D-ATIS | DETROIT APP CON | METRO TOWER | GND CON | CLNC DEL | CPDLC |
| 133.675 | 125.15 284.0 | 118.4 317.725 | 121.8 (NW) 119.45 (NE) 132.725 (SW) 119.25 (SE) | 120.65 | |



| | | | | | |
|-------------------------------|---------|--------|--|--------|-----------------|
| 1100 | 4000 | GAAGE | VGSI and RNAV glidepath not coincident (VGSI Angle 3.00/TCH 80). | | ROBBI |
| | | | BALAS | 5000 | |
| | RWY 21L | 2000 | 3000 | 4000 | GP 3.00° TCH 55 |
| | 4.1 NM | 3.1 NM | 3.1 NM | 3.1 NM | |
| CATEGORY | A | B | C | D | |
| RNP 0.30 DA | 1062/40 | | 430 (500-¾) | | |
| AUTHORIZATION REQUIRED | | | | | |



EC-1, 13 JUN 2024 to 11 JUL 2024

EC-1, 13 JUN 2024 to 11 JUL 2024