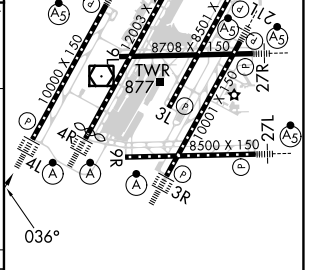
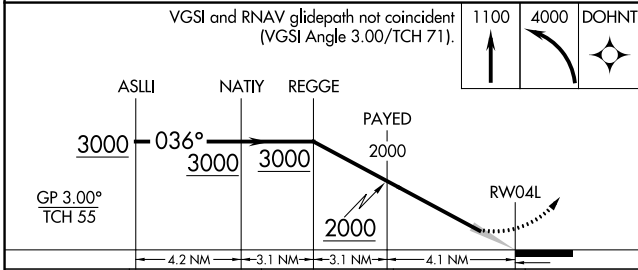
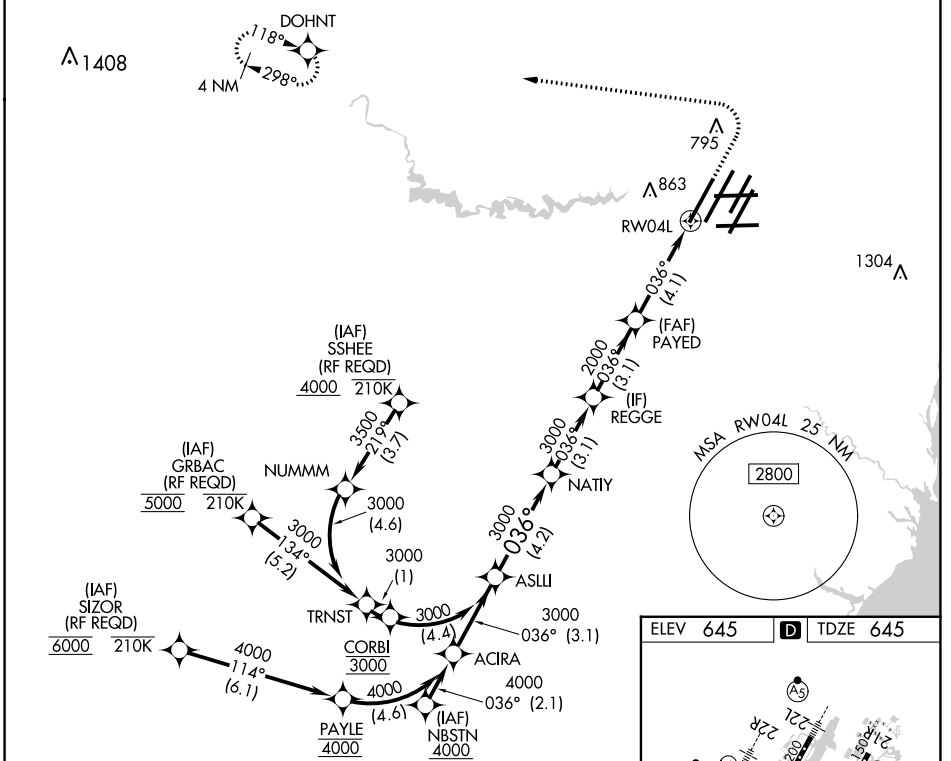


APP CRS	Rwy Idg	<b>10000</b>
<b>036°</b>	TDZE	<b>645</b>
	Apt Elev	<b>645</b>

# RNAV (RNP) X RWY 4L

DETROIT METRO WAYNE COUNTY (DTW)

RNP AR APCH.		ALSF-2	MISSED APPROACH: Climb to 1100 then climbing left turn to 4000 direct DOHNT and hold.		
Simultaneous approach authorized. For uncompensated Baro-VNAV systems, procedure NA below -19°C or above 54°C. For inop ALS, increase RNP 0.30 DA all Cats visibility to RVR 6000.					
D-ATIS	DETROIT APP CON	METRO TOWER	GND CON	CLNC DEL	CPDLC
<b>133.675</b>	<b>124.05 284.0</b>	<b>135.0 317.725</b>	<b>121.8 (NW)</b> <b>132.725 (SW)</b>	<b>119.45 (NE)</b> <b>119.25 (SE)</b>	<b>120.65</b>



CATEGORY	A	B	C	D
RNP 0.15 DA		970/26	325 (400-½)	
RNP 0.30 DA		1058/40	413 (500-¾)	

## AUTHORIZATION REQUIRED

TDZ/CL Rwy's 3R, 4L, 4R and 22R  
REL Rwy's 3L, 9L, 9R and 21R  
HIRL all runways

EC-1, 13 JUN 2024 to 11 JUL 2024

EC-1, 13 JUN 2024 to 11 JUL 2024