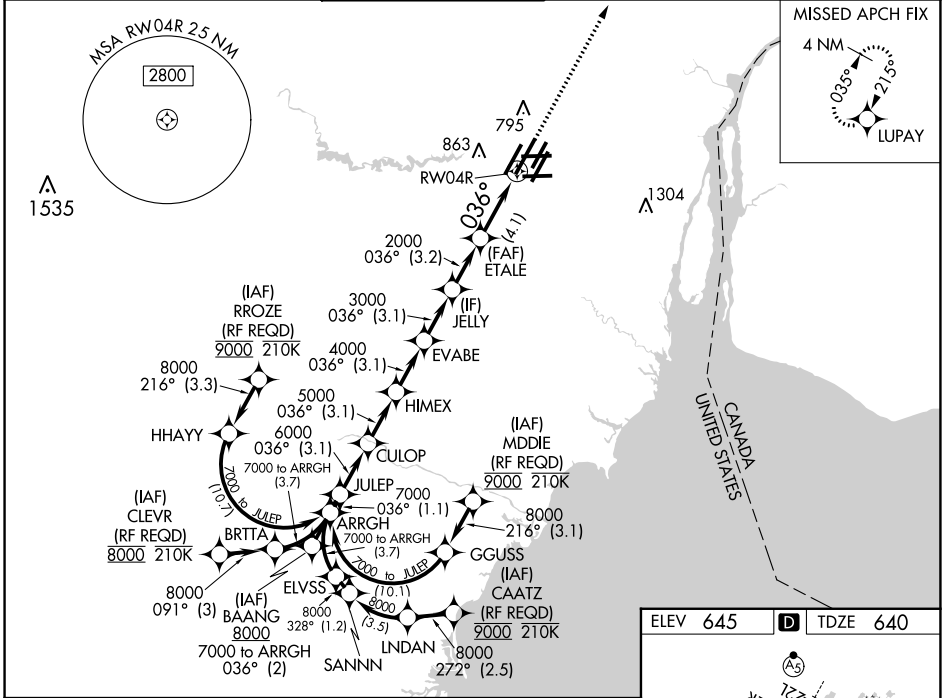


APP CRS	Rwy Idg <b>11494</b>
<b>036°</b>	TDZE <b>640</b>
	Apt Elev <b>645</b>

# RNAV (RNP) X RWY 4R

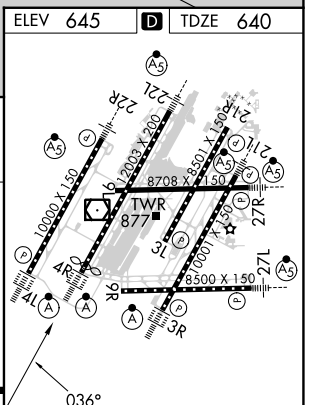
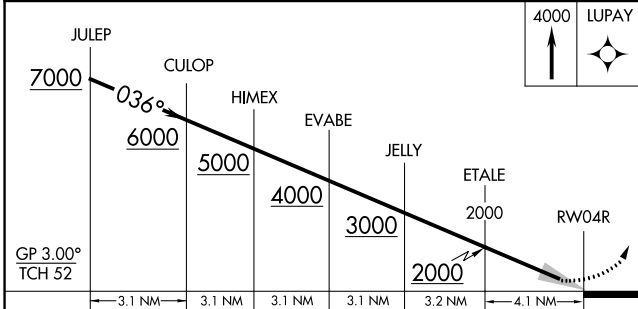
DETROIT METRO WAYNE COUNTY (DTW)

RNP AR APCH.		ALSF-2		MISSED APPROACH: Climb to 4000 direct LUPAY and hold.	
For uncompensated Baro-VNAV systems, procedure NA below -19°C (-2°F) or above 54°C (130°F). Simultaneous approach authorized.					
D-ATIS	DETROIT APP CON	METRO TOWER	GND CON	CLNC DEL	CPDLC
<b>133.675</b>	<b>124.05 284.0</b>	<b>128.125 317.725</b>	<b>121.8 (NW) 119.45 (NE) 132.725 (SW) 119.25 (SE)</b>	<b>120.65</b>	



EC-1, 13 JUN 2024 to 11 JUL 2024

EC-1, 13 JUN 2024 to 11 JUL 2024



CATEGORY	A	B	C	D
RNP 0.30 DA	1031/35		391 (400- $\frac{1}{2}$ )	

**AUTHORIZATION REQUIRED**

TDZ/CL Rwys 3R, 4L, 4R and 22R  
REIL Rwys 3L, 9L, 9R and 21R  
HIRL all runways