

WAAS CH 99601 W22A	APP CRS 216°	Rwy Idg 12003 TDZE 637 Apt Elev 645
--	------------------------	--

RNAV (GPS) Z RWY 22L

DETROIT METRO WAYNE COUNTY (DTW)

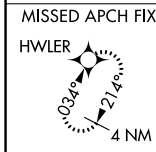
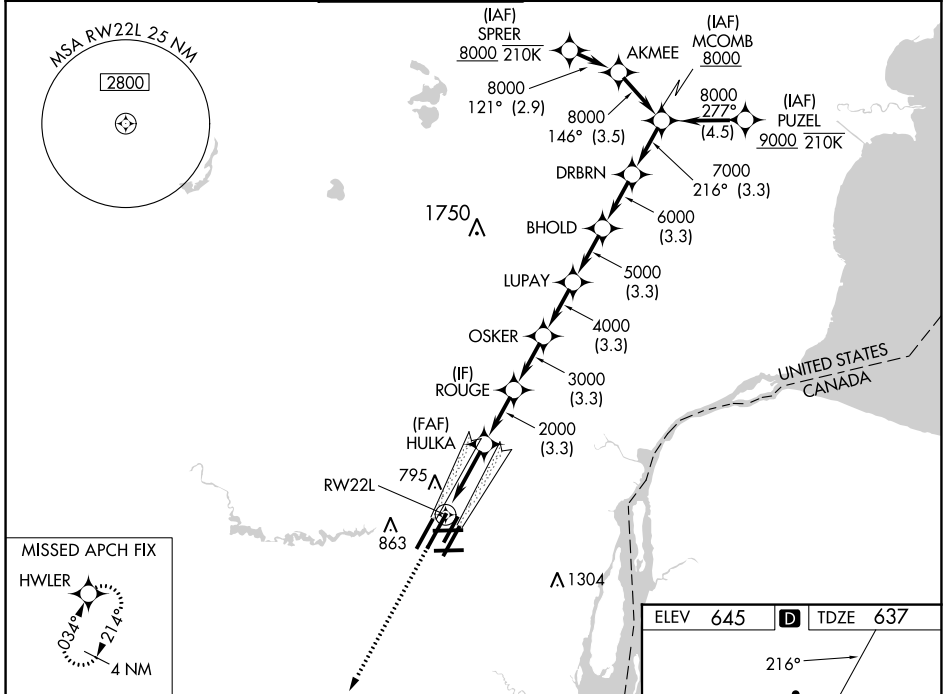
RNP APCH.

▼ For uncompensated Baro-VNAV systems, LNAV/VNAV NA below -10°C (14°F) or above 54°C (130°F). Simultaneous approach authorized. LNAV procedure NA during simultaneous operations. Use of FD or AP required during simultaneous operations. For inop ALS, increase LNAV/VNAV all Cats visibility to RVR 4500 and LNAV Cat C/D visibility to 1½ SM. #RVR 1800 authorized with use of FD or AP or HUD to DA.

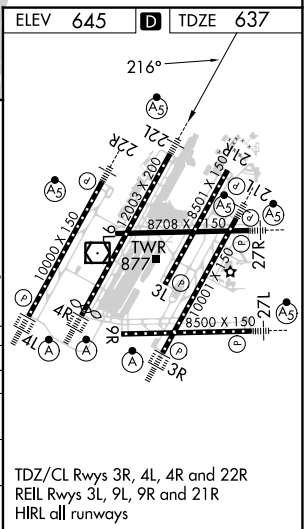


MISSED APPROACH:
Climb to 4000 direct
HWLER and hold.

D-ATIS 133.675	DETROIT APP CON 124.05 284.0	METRO TOWER 128.125 317.725	GND CON 121.8 (NW) 119.45 (NE) 132.725 (SW) 119.25 (SE)	CLNC DEL 120.65	CPDLC
--------------------------	--	---------------------------------------	---	---------------------------	-------



4000	HWLER				
*LNAV only.					
* 1.3 NM to RW22L					
RW22L					
1.3 NM		3 NM		3.3 NM	
HULKA 2000		ROUGE 3000		OSKER 4000	
		LUPAY 5000		BHOLD 6000	
				DRBRN 7000	
				MCOMB 8000	
				216°	
				GP 2.85°	
				TCH 60	
CATEGORY	3	A	B	C	D
LPV DA#			837/24	200 (200-½)	
LNAV/VNAV DA			938/24	301 (300-½)	
LNAV MDA	1100/24	463 (500-½)		1100/50	463 (500-¾)
CIRCLING	1180-1	535 (600-1)		1180-1½	1240-2
				535 (600-½)	595 (600-2)



EC-1, 13 JUN 2024 to 11 JUL 2024

EC-1, 13 JUN 2024 to 11 JUL 2024