

RNAV (GPS)-A

ELKINS/RANDOLPH COUNTY (JENNINGS RANDOLPH FLD) (EKN)

APP CRS	Rwy Idg	N/A
331°	TDZE	N/A
	Apt Elev	1987

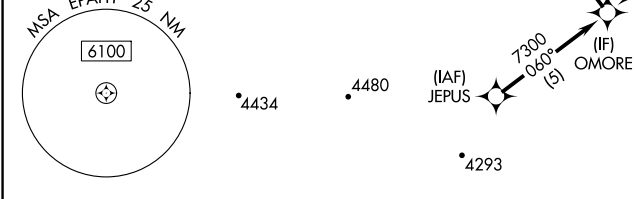
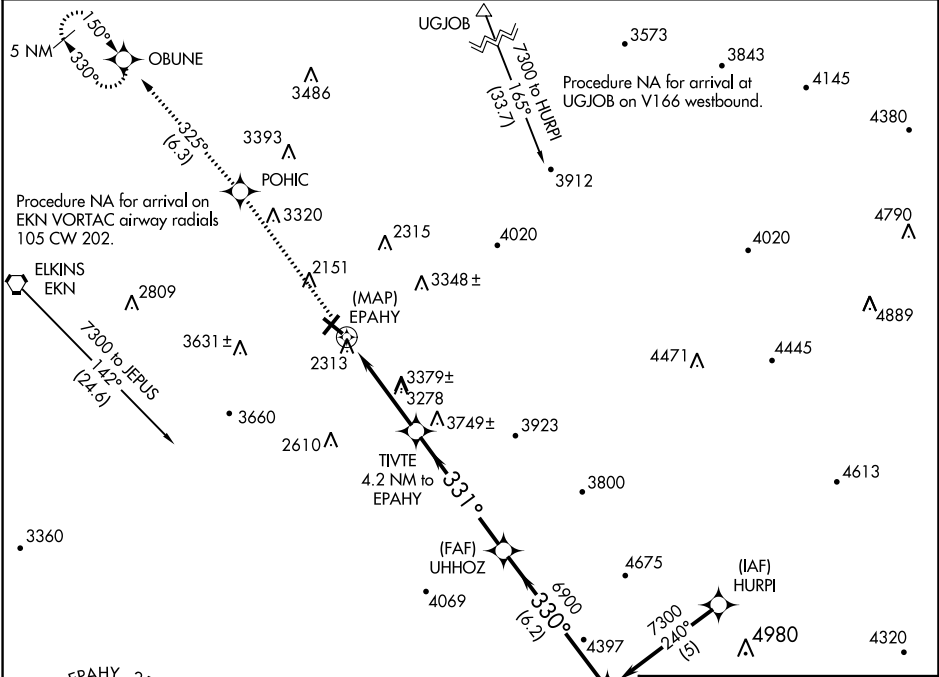
RNP APCH.

⚠ Circling Rwy 14, 23, 32 NA at night. When local altimeter setting not received, use Buckhannon altimeter setting and increase all MDA 100 feet.

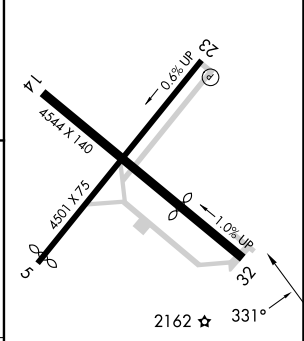
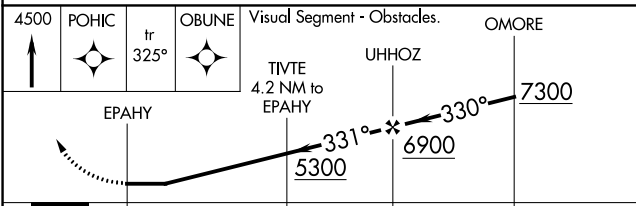
❄ -20°C

MISSED APPROACH: Climb to 4500 direct POHIC and on track 325° to OBUNE and hold.

ASOS 119.275	CLARKSBURG APP CON ★ 121.15 284.65	CTAF 123.6	122.9 0
------------------------	--	----------------------	----------------



ELEV 1987



CATEGORY	A	B	C	D
C CIRCLING	3640-1¼ 1653 (1700-1¼)	3640-1½ 1653 (1700-1½)	3720-3 1733 (1800-3)	NA

MIRL Rwy 5-23 **0**
REIL Rwy 23 **0**

RNAV (GPS)-A

NE-4, 13 JUN 2024 to 11 JUL 2024

NE-4, 13 JUN 2024 to 11 JUL 2024