

RNAV (RNP) Z RWY 26L

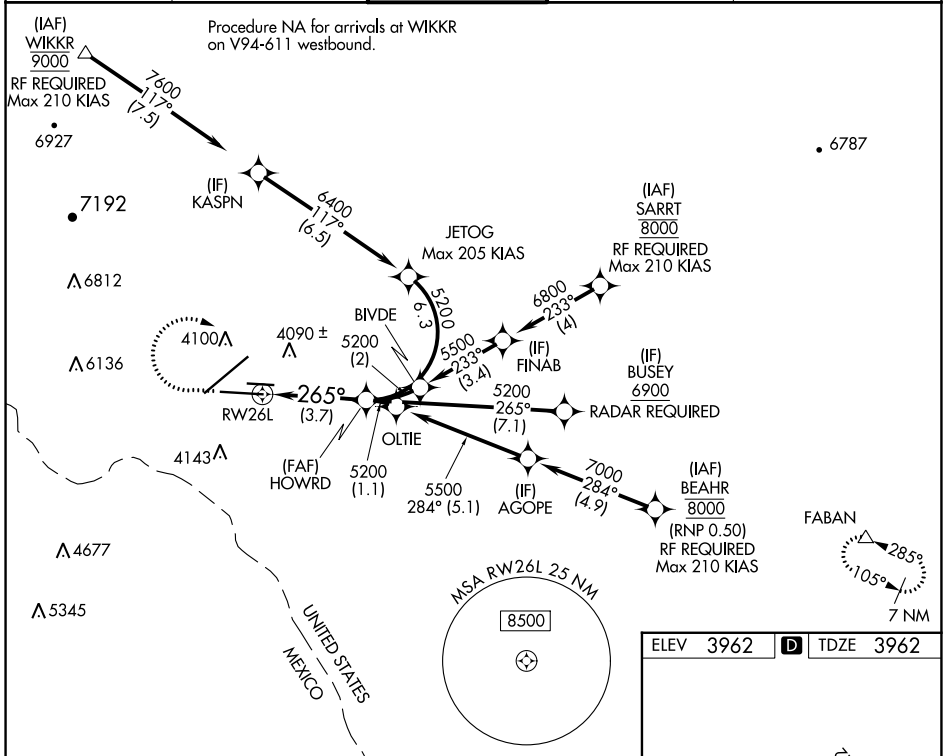
EL PASO INTL (ELP)

APP CRS 265°	Rwy Idg 9025
	TDZE 3962
	Apt Elev 3962

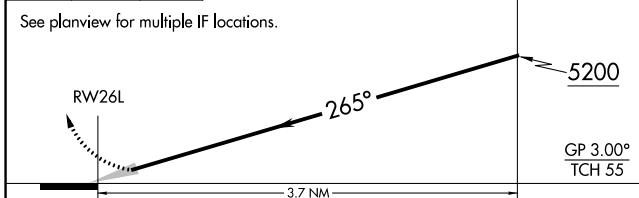
ASR For uncompensated Baro-VNAV systems, procedure NA below -8°C (18°F) or above 50°C (122°F). For inop MALSRS, increase RNP 0.30 visibility all Cats to 1 mile. GPS Required.

MALSRS MISSED APPROACH: Climb to 4400, then climbing right turn to 7500 direct FABAN and hold.

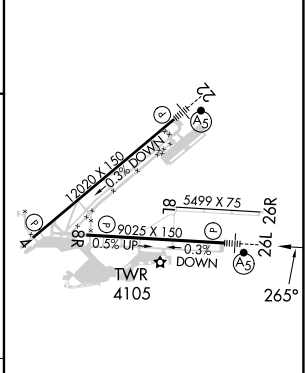
D-ATIS 120.0 254.3	EL PASO APP CON 124.25 298.85	EL PASO TOWER 118.3 239.275	GND CON 121.9 348.6	CLNC DEL 125.0 379.1
------------------------------	---	--	-------------------------------	--------------------------------



4400 7500 FABAN
 ↑ ↘ △
 VGSI and glidepath not coincident (VGSI Angle 3.00/TCH 75).



ELEV 3962	D TDZE 3962
-----------	--------------------



CATEGORY	A	B	C	D
RNP 0.30 DA		4275-1/2	313 (400-1/2)	

AUTHORIZATION REQUIRED

MIRL Rwy 8L-26R
 REIL Rwy 4 and 8R
 HIRL Rwy 4-22 and 8R-26L

SC-3, 13 JUN 2024 to 11 JUL 2024

SC-3, 13 JUN 2024 to 11 JUL 2024