

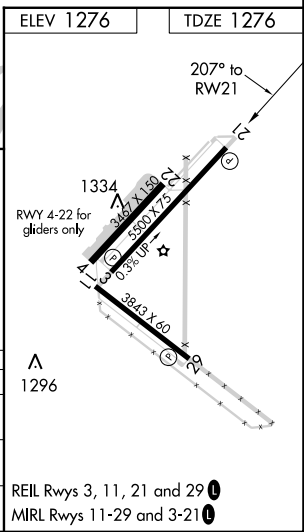
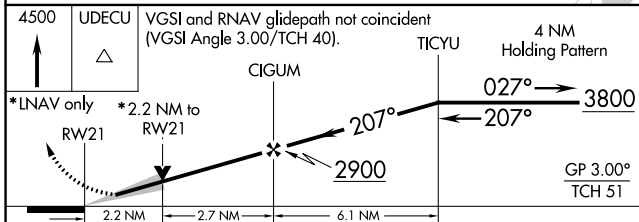
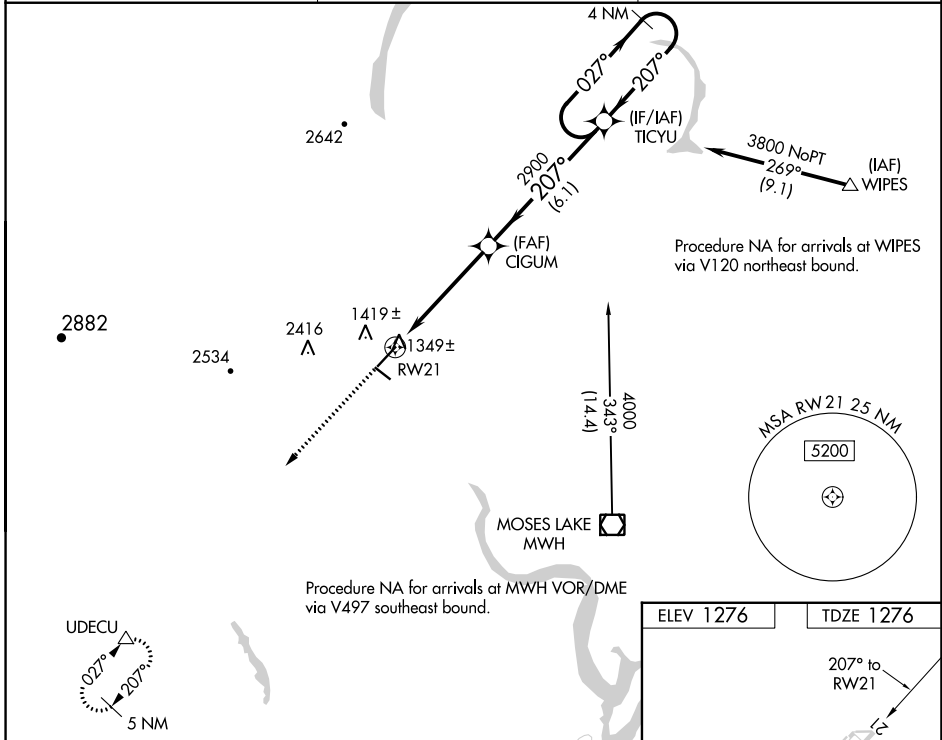
|  |                        |   |
|--|------------------------|---|
| WAAS<br>CH <b>82308</b><br><b>W21A</b> | APP CRS<br><b>207°</b> | Rwy Idg<br>TDZE <b>1276</b><br>Apt Elev <b>1276</b> |
|--|------------------------|---|

# RNAV (GPS) RWY 21

EPHRATA MUNI (EPH)

|  |   |
|--|---|
| RNP APCH.  | MISSED APPROACH: Climb to 4500 direct UDECU and hold. |
| <p>⚠ For uncompensated Baro-VNAV systems, LNAV/VNAV NA below -17°C or above 46°C. VDP and Baro-VNAV NA when using Moses Lake/Grant County Intl altimeter setting. When local altimeter setting not received, use Moses Lake/Grant County Intl altimeter setting and increase all DA/MDA 40 feet; increase visibility LPV all Cats, and LNAV Cats C and D ¼ SM.</p> |   |

|                        |   |                                 |
|------------------------|---|---------------------------------|
| ASOS<br><b>135.775</b> | GRANT COUNTY APP CON *<br><b>126.4 379.95</b> | UNICOM<br><b>122.8 (CTAF) 0</b> |
|------------------------|---|---------------------------------|



|              |                       |                         |                         |                         |
|--------------|-----------------------|-------------------------|-------------------------|-------------------------|
| CATEGORY     | A                     | B                       | C                       | D                       |
| LPV DA       |                       | 1526-¾                  | 250 (300-¾)             |                         |
| LNAV/VNAV DA |                       | 2171-4                  | 895 (900-4)             |                         |
| LNAV MDA     | 2020-1<br>744 (800-1) | 2020-1¼<br>744 (800-1¼) | 2020-2¼<br>744 (800-2¼) | 2020-2½<br>744 (800-2½) |

NW-1, 13 JUN 2024 to 11 JUL 2024

NW-1, 13 JUN 2024 to 11 JUL 2024