

FORT MOORE, GEORGIA

ILS or LOC RWY 33

LOC I-LSF 110.7	APCH CRS 327°	Rwy ldg TDZE Arpt Elev 9302 226 227
---------------------------	-------------------------	---

[USA]

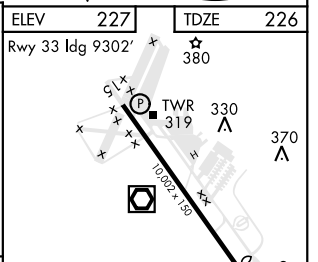
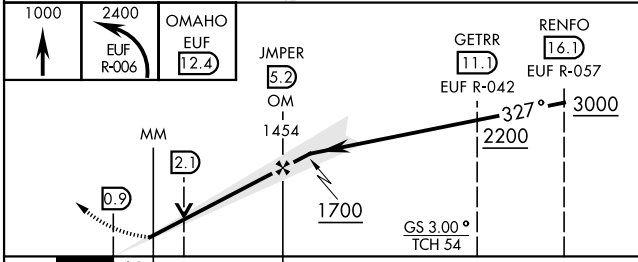
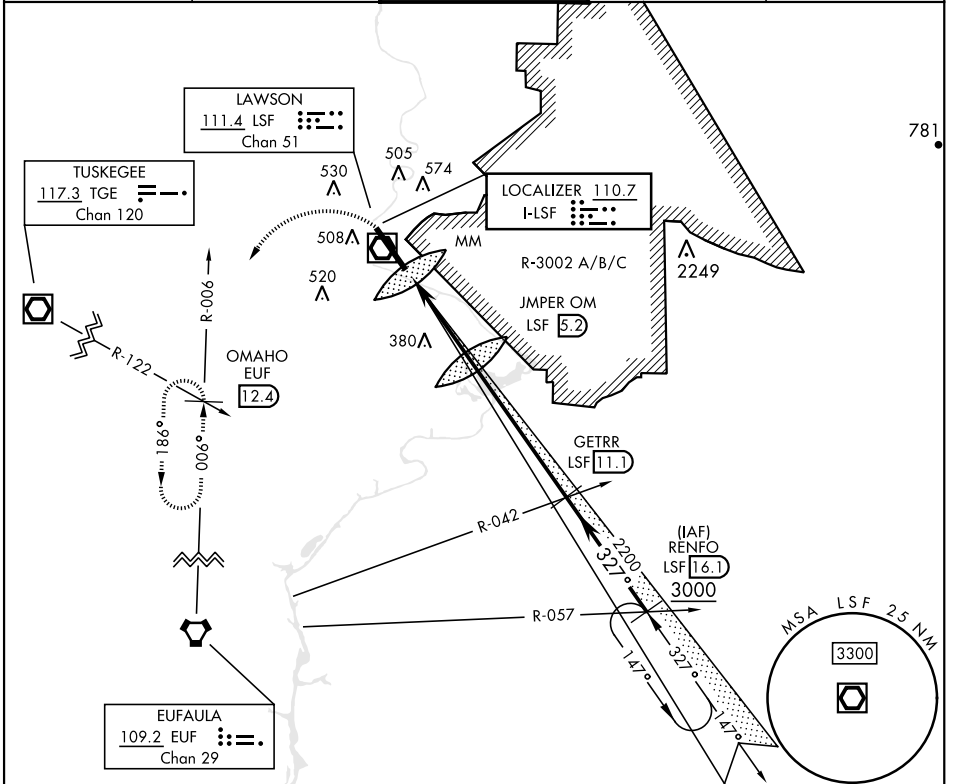
LAWSON AAF (KLSF)

▼ * Circling not authorized E of Rwy 15-33.
 NA when tower closed.



MISSED APPROACH: Climb to 1000 then climbing left turn to 2400 via EUF R-006 to OMAHO INT/EUF 12.4 DME and hold.

ATIS ★ 134.375	ATLANTA APP CON 125.5 323.1	TOWER 119.05 (CTAF) 269.525	GND CON 121.7 254.25	CLNC DEL 121.7 251.15
--------------------------	---------------------------------------	--	--------------------------------	---------------------------------



CATEGORY	A	B	C	D
S-ILS 33	426/24	200 (200-½)	426/40	200 (200-¾)
S-LOC 33	640/40	414 (500-¾)	640/50	414 (500-1)
CIRCLING*	820-1	593 (600-1)	840-1 ¾ 613 (700-1 ¾)	880-2 653 (700-2)

HIRL Rwy 15-33	FAF to MAP 4.4 NM				
Knots	60	90	120	150	180
Min:Sec	4:24	2:56	2:12	1:46	1:28

FORT MOORE, GEORGIA

32° 20' N-85° 00' W

LAWSON AAF (KLSF)

Orig B 22FEB24

ILS or LOC RWY 33

SE-4, 13 JUN 2024 to 11 JUL 2024

SE-4, 13 JUN 2024 to 11 JUL 2024