

RNAV (GPS) RWY 33

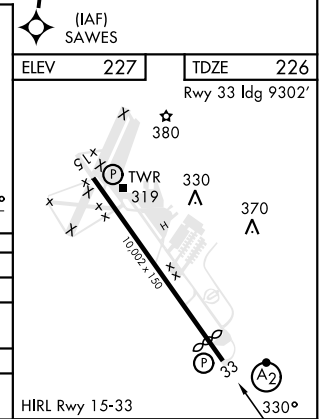
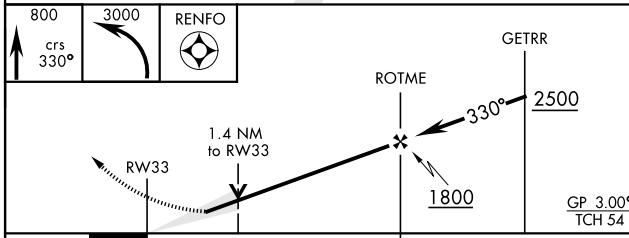
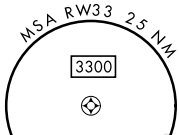
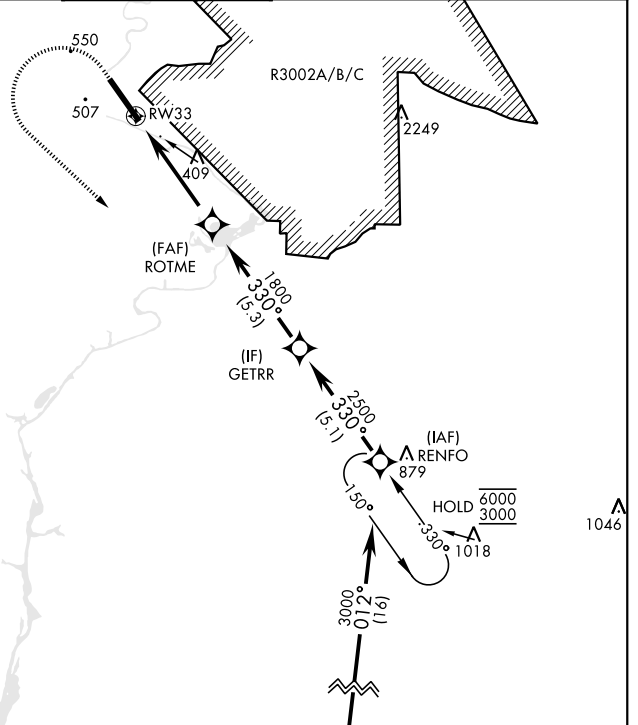
WAAS CH 67545 W33A	APCH CRS 330°	Rwy Ldg TDZE Arpt Elev 9302 226 227	[USA]	LAWSON AAF (KLSF)
--	-------------------------	---	-------	-------------------

RNP APCH-GPS	SALSF A2	MISSED APPROACH: Climb to 800 then climbing left turn to 3000 direct RENFO and hold.
--------------	--------------------	--

* When ALS inop, increase vis to 1 3/8 mile.
 ** When ALS inop, increase CAT AB RVR to 55, vis to 1 mile; CAT CD vis to 1 3/8 miles.
 *** Circling not authorized NE of Rwy 15-33. Not authorized when tower closed.

ATIS ★ 134.375	ATLANTA APP CON 125.5 323.1	TOWER 119.05 (CTAF) 269.525	GND CON 121.7 254.25	CLNC DEL 121.7 251.15
--------------------------	---------------------------------------	---------------------------------------	--------------------------------	---------------------------------

For uncompensated Baro-VNAV systems, LNAV/VNAV below -15°C or above 54°C.



CATEGORY	A		B		C		D	
LPV DA	427/40		200		(200-3/4)			
LNAV/VNAV DA*	701/60		474		(500-1 1/8)			
LNAV MDA**	740/40	513 (600-3/4)	740-1 1/4	513 (600-1 1/4)				
*** CIRCLING	820-1	860-1	960-2	1080-2 3/4				
	593 (600-1)	633 (700-1)	733 (800-2)	853 (900-2 3/4)				

RNAV (GPS) RWY 33

SE-4, 13 JUN 2024 to 11 JUL 2024

SE-4, 13 JUN 2024 to 11 JUL 2024