

FORT MOORE, GEORGIA

VOR/DME RWY 15

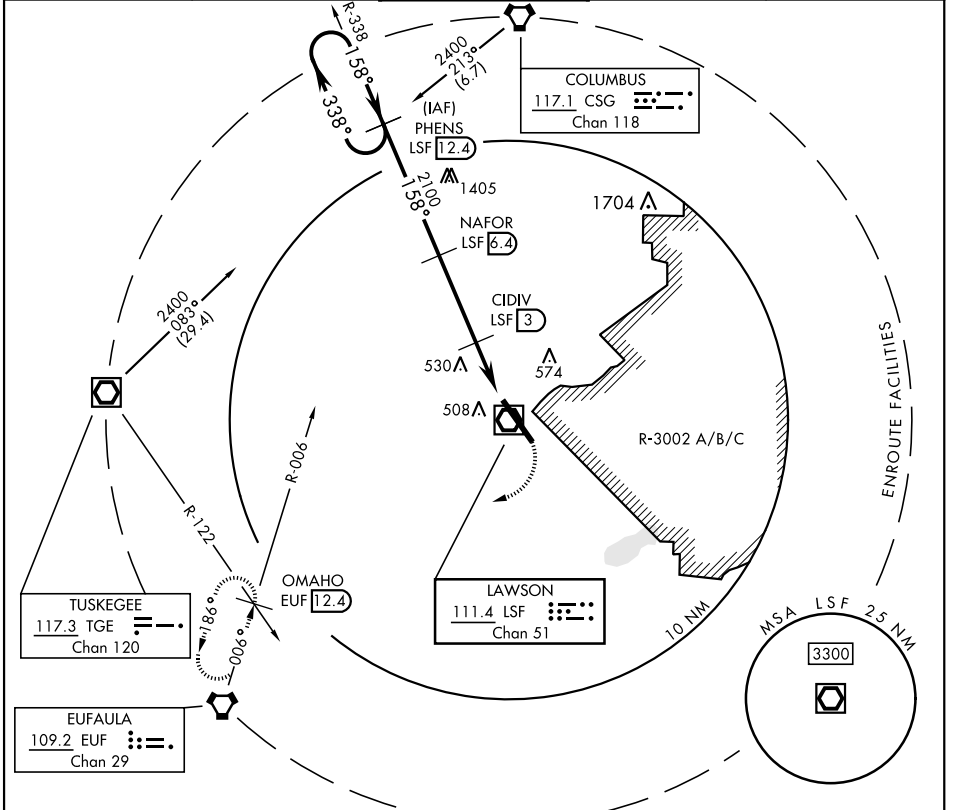
VOR/DME LSF 111.4 Chan 51	APCH CRS 158°	Rwy ldg 10,002 TDZE 226 Arprt Elev 227
---	-------------------------	---

[USA]

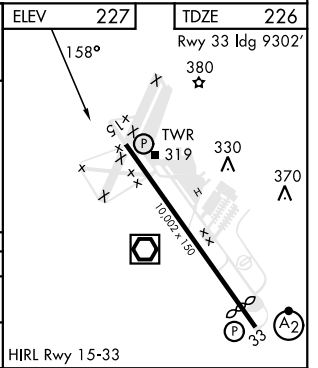
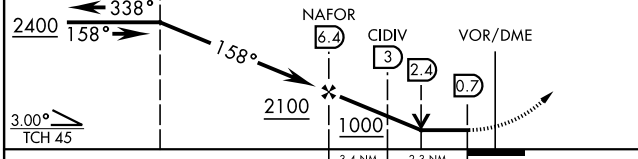
LAWSON AAF (KLSF)

⚠ * Circling not authorized E of Rwy 15-33. MISSED APPROACH: Climbing right turn to 2400 via heading 240° and EUF VORTAC R-006 to OMAHO INT/EUF 12.4 DME and hold.

ATIS ★ 134.375	ATLANTA APP CON 125.5 323.1	TOWER 119.05 (CTAF) 269.525	GND CON 121.7 254.25	CLNC DEL 121.7 251.15
--------------------------	---------------------------------------	--	--------------------------------	---------------------------------



One Minute Holding Pattern PHENS 12.4	VGSI and descent angles not coincident.	2400 hdg 240°	OMAHO EUF 12.4	ELEV 227	TDZE 226 Rwy 33 ldg 9302'
--	---	------------------	-------------------	----------	------------------------------



CATEGORY	A	B	C	D
S-15	820/50	594 (600-1)	820-1½ 594 (600-1½)	820-1¾ 594 (600-1¾)
C CIRCLING *	820-1	593 (600-1)	840-1¾ 613 (700-1¾)	880-2 653 (700-2)

HIRL Rwy 15-33

FORT MOORE, GEORGIA
Amdt 9B 25JAN24

32°20'N-85°00'W

LAWSON AAF (KLSF)

VOR/DME RWY 15

SE-4, 13 JUN 2024 to 11 JUL 2024

SE-4, 13 JUN 2024 to 11 JUL 2024