

VOR/DME FBR <b>114.45</b> Chan <b>91 (Y)</b>	APP CRS <b>215°</b>	Rwy Idg TDZE Apt Elev	<b>6404</b> <b>7018</b> <b>7038</b>
--	------------------------	-----------------------------	---

# VOR RWY 22

FORT BRIDGER (FBR)

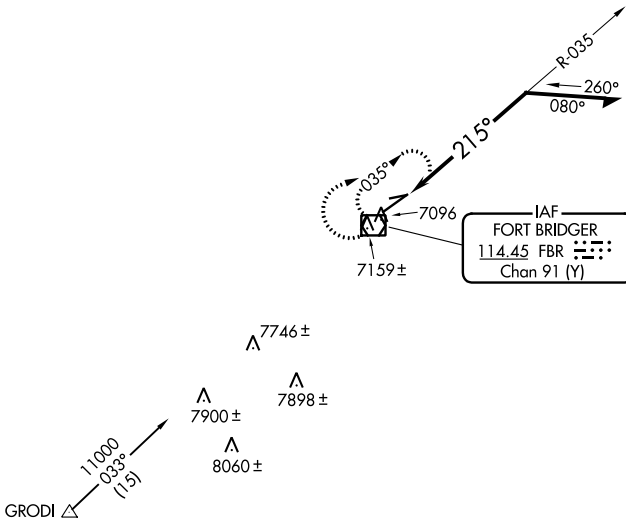
**NA** Circling NA to Rwys 7 and 25. When local altimeter setting not received, use Evanston altimeter setting and increase all MDAs 100 feet, increase S-22 Cats C and D and Circling Cat C visibility ¼ SM, and Circling Cat D visibility ½ SM.

**MISSED APPROACH:**  
Climbing right turn to 9000 in FBR VOR/DME holding pattern.

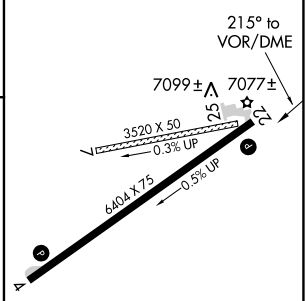
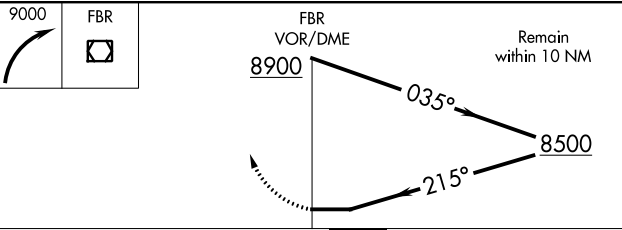
AWOS-3PT  
**118.8**

SALT LAKE CENTER  
**124.35 353.5**

UNICOM  
**122.8 (CTAF)**



ELEV 7038 | TDZE 7018



CATEGORY	A	B	C	D
S-22	7440-1	422 (500-1)	7440-1 ¼	422 (500-1 ¼)
<b>CIRCLING</b>	7480-1 442 (500-1)	7500-1 462 (500-1)	7660-1 ¾ 622 (700-1 ¾)	7680-2 642 (700-2)

REIL Rwys 4 and 22  
MIRL Rwy 4-22

NW-1, 13 JUN 2024 to 11 JUL 2024

NW-1, 13 JUN 2024 to 11 JUL 2024