

LOC I-FMY 110.7	APP CRS 051°	Rwy Idg 5548 TDZE 15 Apt Elev 17
---------------------------	------------------------	---

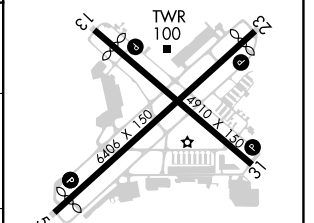
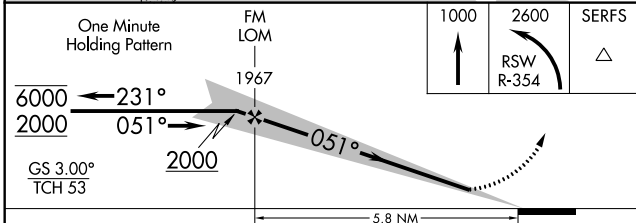
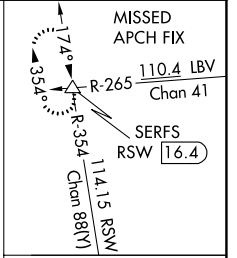
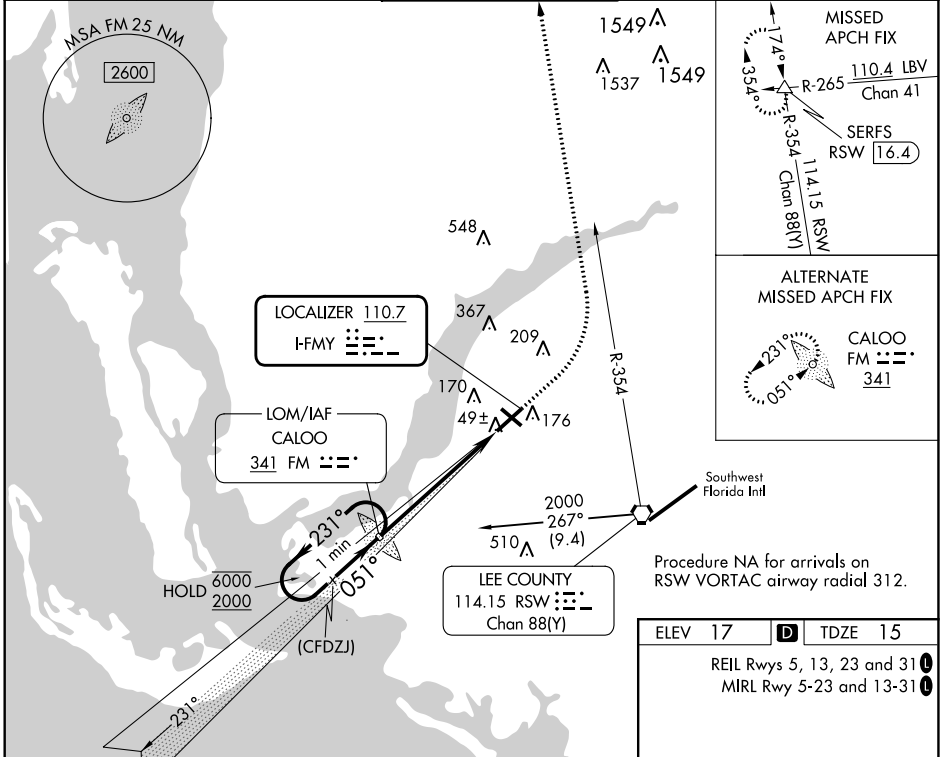
ILS or LOC RWY 5
PAGE FLD (FMY)

ADF or RADAR required for procedure entry. ADF required for LOC only.

When Circling to Rwy 31 at night, operational VGSI required, remain on or above VGSI glidepath until threshold. Rwy 5 helicopter visibility reduction below 3/4 SM NA.

MISSED APPROACH: Climb to 1000 then climbing left turn to 2600 on RSW R-354 to SERFS INT/RSW 16.4 DME and hold.

ATIS 123.725	FORT MYERS APP CON ★ 125.15 306.2 (Rwys 5, 13) 126.8 306.2 (Rwys 23, 31)	PAGE TOWER ★ 119.0 (CTAF) 0 306.95	GND CON 121.7	CLNC DEL 121.7
------------------------	--	---	-------------------------	--------------------------



CATEGORY	A	B	C	D
S-ILS 5	265-1		250 (300-1)	
S-LOC 5	460-1	445 (500-1)	460-1 3/8	445 (500-1 3/8)
CIRCLING	540-1	523 (600-1)	600-1 1/2 583 (600-1 1/2)	680-2 663 (700-2)

ELEV 17	TDZE 15
REIL Rwys 5, 13, 23 and 31 MIRL Rwy 5-23 and 13-31	
FAF to MAP 5.8 NM	
Knots	60 90 120 150 180
Min:Sec	5:48 3:52 2:54 2:19 1:56

SE-3, 13 JUN 2024 to 11 JUL 2024

SE-3, 13 JUN 2024 to 11 JUL 2024