

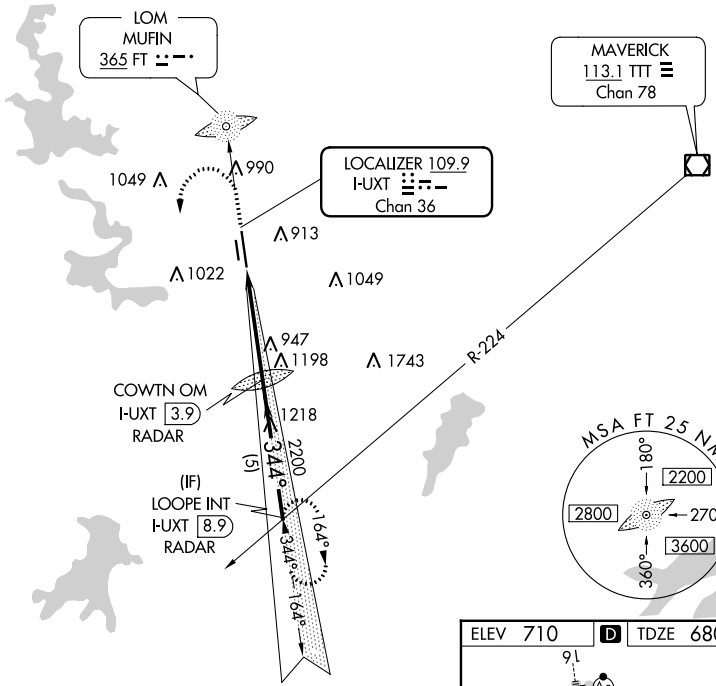
LOC I-UXT <b>109.9</b> Chan <b>36</b>	APP CRS <b>344°</b>	Rwy Idg <b>7455</b> TDZE <b>680</b> Apt Elev <b>710</b>
---	------------------------	---

# ILS or LOC RWY 34

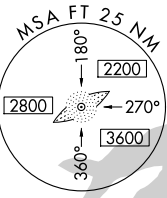
FORT WORTH MEACHAM INTL (FTW)

Inoperative table does not apply to S-LOC 34 Cat C.	MALS 	MISSED APPROACH : Climb to 1500, then climbing left turn to 2800 via I-UXT south course to LOOPE Int/ I-UXT 8.9 DME and hold.
---	----------	---

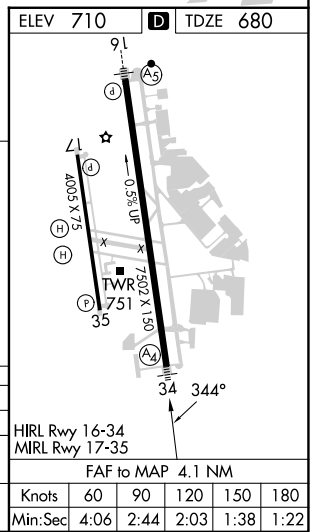
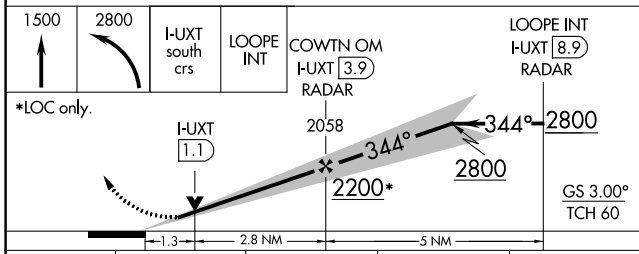
ATIS <b>120.7</b>	REGIONAL APP CON (North) <b>118.1 306.95</b> (South) <b>135.975 379.9</b>	MEACHAM TOWER <b>118.3 257.8</b>	GND CON <b>121.9</b>	CLNC DEL <b>124.65</b>
----------------------	---	-------------------------------------	-------------------------	---------------------------



MAVERICK  
113.1 TTT  
Chan 78



## RADAR REQUIRED



CATEGORY	A	B	C	D
S- ILS 34	880-3/4 200 (200-3/4)			
S-LOC 34	1200-3/4 520 (500-3/4)	1200-1 1/2 520 (500-1 1/2)	1200-1 3/4 520 (500-1 3/4)	
CIRCLING	1260-1 550 (600-1)	1280-1 570 (600-1)	1340-1 3/4 630 (700-1 3/4)	1500-2 1/2 790 (800-2 1/2)

Knots	60	90	120	150	180
Min:Sec	4:06	2:44	2:03	1:38	1:22

SC-2, 13 JUN 2024 to 11 JUL 2024

SC-2, 13 JUN 2024 to 11 JUL 2024