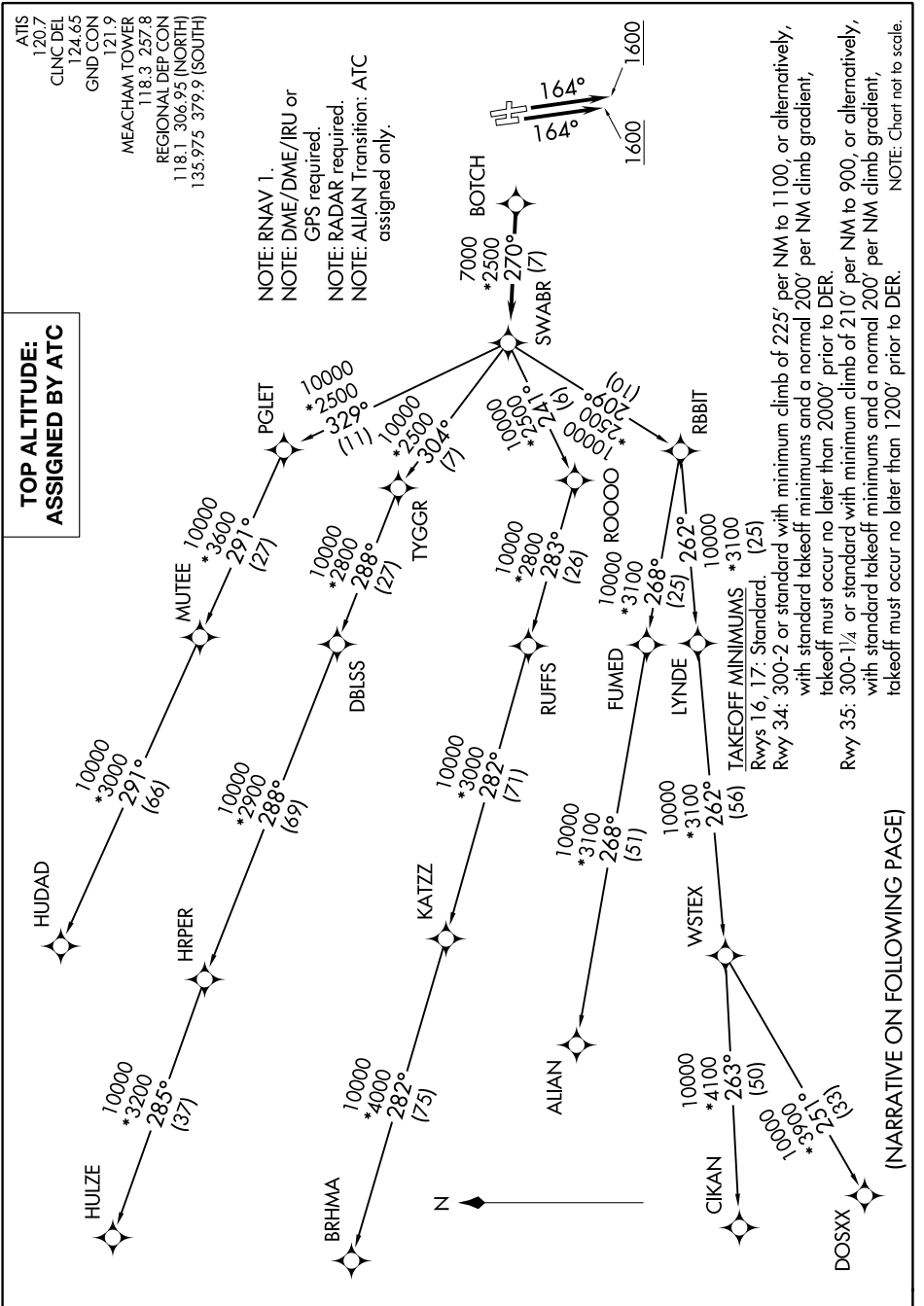


# SWABR ONE DEPARTURE (RNAV)

FORT WORTH, TEXAS

SC-2, 13 JUN 2024 to 11 JUL 2024



# SWABR ONE DEPARTURE (RNAV)

(SWABR1 .SWABR) 24MAR22

FORT WORTH, TEXAS

FORT WORTH MEACHAM INTL (FTW)

(NARRATIVE ON FOLLOWING PAGE)

TAKEOFF MINIMUMS \*3100  
Rwys 16, 17: Standard. (25)  
Rwy 34: 300-2 or standard with minimum climb of 225' per NM to 1100, or alternatively, with standard takeoff minimums and a normal 200' per NM climb gradient, takeoff must occur no later than 2000' prior to DER.  
Rwy 35: 300-1/4 or standard with minimum climb of 210' per NM to 900, or alternatively, with standard takeoff minimums and a normal 200' per NM climb gradient, takeoff must occur no later than 1200' prior to DER.  
NOTE: Chart not to scale.

SC-2, 13 JUN 2024 to 11 JUL 2024