

# GARLAND FIVE DEPARTURE

AL-160 (FAA)

FORT WORTH, TEXAS

SC-2, 13 JUN 2024 to 11 JUL 2024

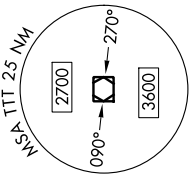
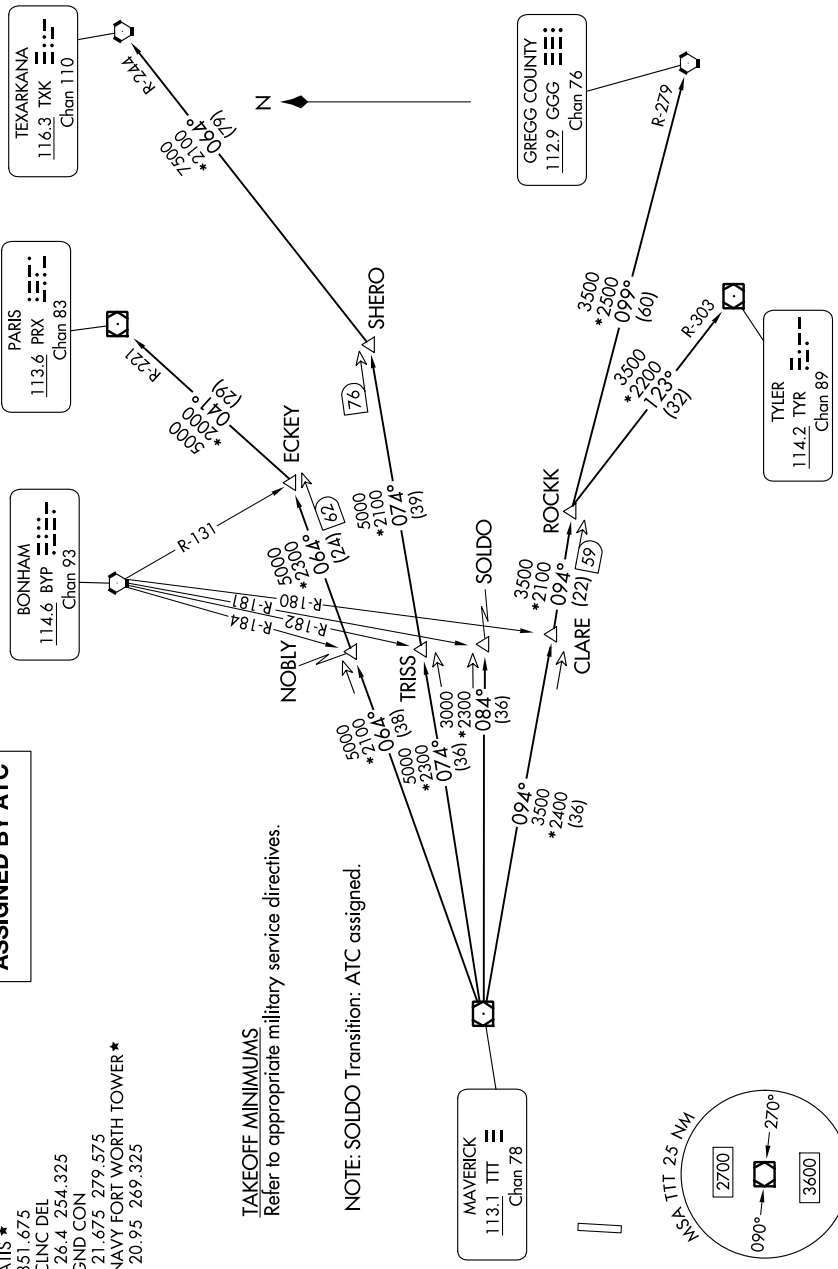
RADAR and DME required.

## TOP ALTITUDE: ASSIGNED BY ATC

REGIONAL DEP CON  
125.8 257.95  
ATIS \*  
351.675  
CLNC DEL  
126.4 254.325  
GND CON  
121.675 279.575  
NAVY FORT WORTH TOWER\*  
120.95 269.325

TAKEOFF MINIMUMS  
Refer to appropriate military service directives.

NOTE: SOLDO Transition: ATC assigned.



NOTE: Chart not to scale.

(CONTINUED ON FOLLOWING PAGE)

SC-2, 13 JUN 2024 to 11 JUL 2024

# GARLAND FIVE DEPARTURE