

FORT WORTH, TEXAS

ILS Z or LOC Z RWY 18

LOC I-NFW 108.7 APCH CRS 177° Rwy Idg 11,999 TDZE 636 Arpt Elev 650 [USN] FORT WORTH NAS JRB (CARSWELL FLD) (KNFW)

FAZ VORTAC or RADAR required
 * Circling not authorized E of Rwy 18-36.
 MISSED APPROACH: Climb to 3000 direct LYLEE to intercept FUZ VORTAC R-218 to MOLKE and hold.

ATIS* 351.675	REGIONAL APP CON 125.8 257.95	NAVY FORT WORTH TOWER* 120.950 269.325	GND CON 121.675 279.575	CLNC DEL 126.4 254.325	ASR/PAR
-------------------------	---	--	-----------------------------------	----------------------------------	---------

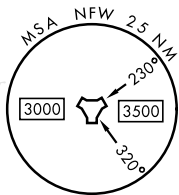
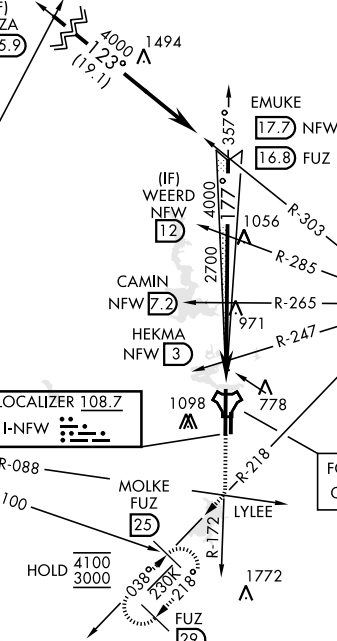
CAUTION: ILS TCH exceeds 60'.

CAUTION: Wheel crossing height for height group 1 (53') is higher than the maximum 50'. Wheel crossing height group 1 includes general aviation, small commuters, corporate turboprops, T-38, C-12, C-20, C-21, T-1, fighter jets, UC-35, T-3, T-6 aircraft.
 1470

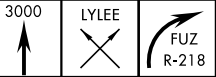
When local altimeter is not received, use Fort Worth Meacham altimeter setting.

MILLSAP
 117.7 MQP
 Chan 124

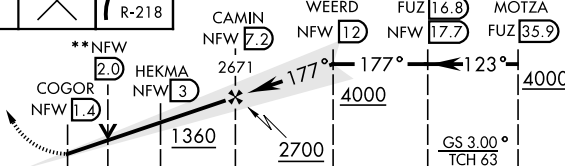
(IAF)
 MOTZA
 FUZ 35.9



EMERG SAFE ALT 100 NM 4000



** VDP NA when using FTW altimeter setting



ELEV 650 TDZE 636

CATEGORY	A	B	C	D	E
S-ILS 18	836-3/4		200	(200-3/4)	
S-LOC 18	1040-1	404 (400-1)	1040-1 1/8	404	(400-1 1/8)
C CIRCLING*	1220-1 570 (600-1)	1320-1 670 (700-1)	1320-1 3/4 670 (700-1 3/4)	1340-2 1/4 690 (700-2 1/4)	1440-2 3/4 790 (800-2 3/4)
FORT WORTH MEACHAM ALTIMETER					
S-ILS 18	856-3/4		220	(300-3/4)	
S-LOC 18	1060-1	424 (500-1)	1060-1 1/4	424	(500-1 1/4)
C CIRCLING*	1240-1 590 (600-1)	1340-1 690 (700-1)	1340-2 690 (700-2)	1360-2 1/4 710 (800-2 1/4)	1460-2 3/4 810 (900-2 3/4)

HIRL Rwy 18-36
 REIL Rwy 18

FAF to MAP 5.8 NM

Knots	60	90	120	150	180
Min:Sec	5:48	3:52	2:54	2:19	1:56

FORT WORTH, TEXAS 32°46'N-97°26'W FORT WORTH NAS JRB (CARSWELL FLD) (KNFW)

Orig 18MAY23

ILS Z or LOC Z RWY 18

SC-2, 13 JUN 2024 to 11 JUL 2024

SC-2, 13 JUN 2024 to 11 JUL 2024