

RNAV (GPS) RWY 30

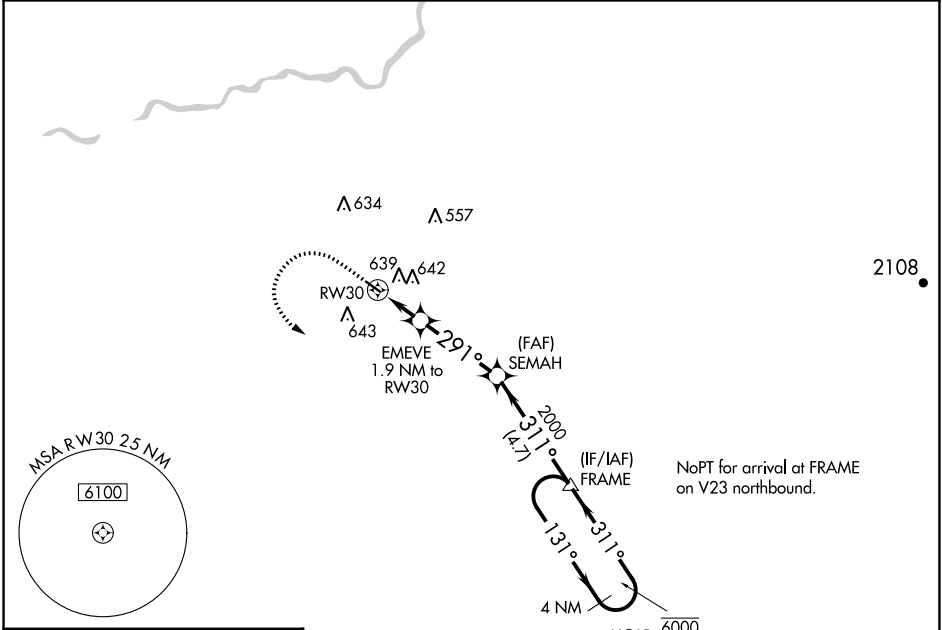
FRESNO CHANDLER EXEC (FCH)

APP CRS	Rwy Idg	3089
291°	TDZE	280
	Apt Elev	280

RNP APCH. MISSED APPROACH: Climb to 1000 then climbing left turn to 2000 direct FRAME and hold.

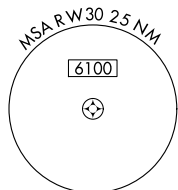
▼ Straight-in Rwy 30 NA at night, Circling Rwy 30 NA at night.
Rwy 30 helicopter visibility reduction below 1 SM NA.

AWOS-3 135.225	FRESNO APP CON 119.0 323.25	CLNC DEL 119.0	UNICOM 123.0 (CTAF) 0
--------------------------	---------------------------------------	--------------------------	---------------------------------

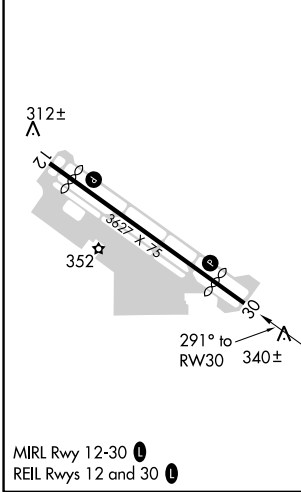


SW-2, 13 JUN 2024 to 11 JUL 2024

SW-2, 13 JUN 2024 to 11 JUL 2024



ELEV 280	TDZE 280
----------	----------



	1000	2000	FRAME	SEMAH	FRAME	4 NM Holding Pattern
	↑	↩	△			
		EMEVE 1.9 NM to RW30	3.00° TCH 40	2000	311°	131° → 6000 / 2000
		RW30	291°	920		← 311°
		-1.9	3.4 NM	4.7 NM		
CATEGORY	A	B	C	D		
LNAV MDA	800-1	520 (600-1)	800-1 3/8 520 (600-1 3/8)	NA		
C CIRCLING	960-1	680 (700-1)	960-2 680 (700-2)	NA		