

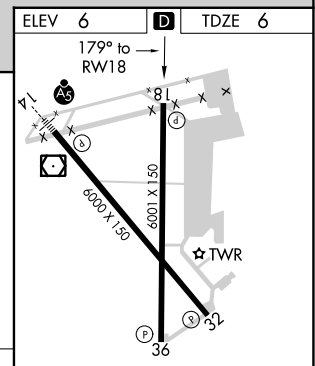
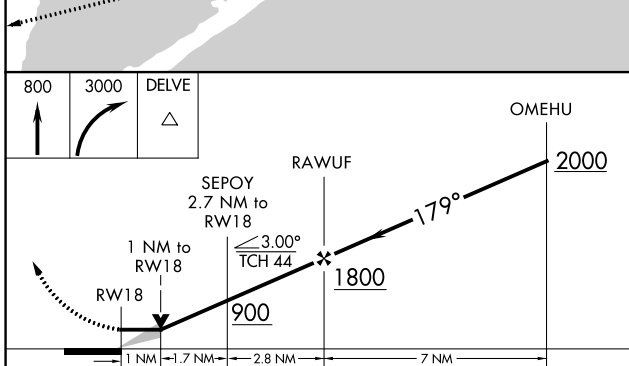
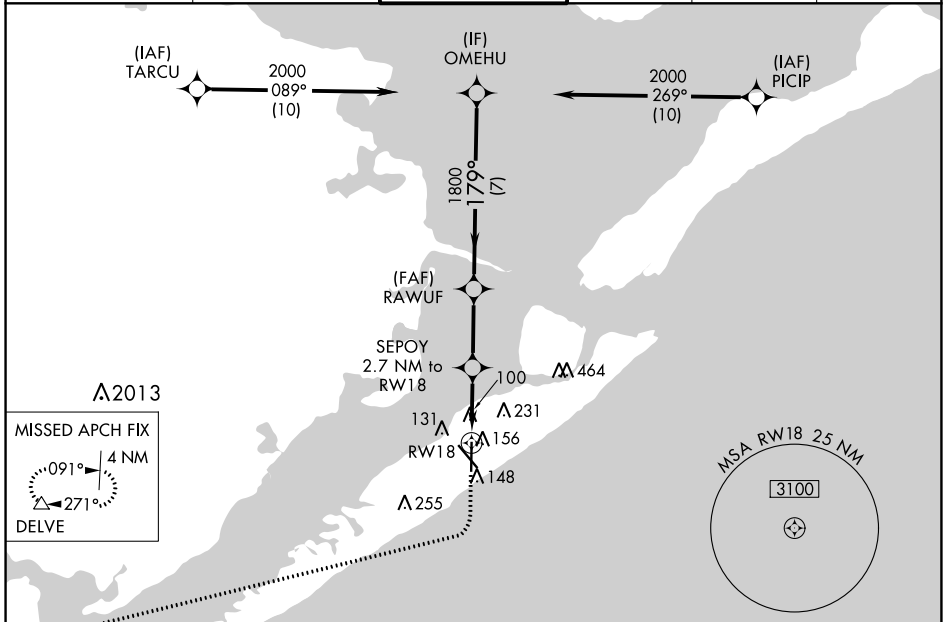
WAAS CH 82301 W18A	APP CRS 179°	Rwy Idg TDZE Apt Elev	6001 6 6
--	------------------------	-----------------------------	-------------------------------------

RNAV (GPS) RWY 18

SCHOLES INTL AT GALVESTON (GLS)

RNP APCH.		MISSED APPROACH: Climb to 800 then climbing right turn to 3000 direct DELVE and hold.		
		Circling NA east of Rwy 18 and northeast of Rwy 32.		

ASOS 123.95	HOUSTON APP CON 134.45 284.0	GALVESTON TOWER * 120.575 (CTAF)	GND CON 118.625	CLNC DEL 135.35 <small>(When twr closed)</small>	UNICOM 123.05
-----------------------	--	---	---------------------------	---	-------------------------



	800	3000	DELVE		
	↑	↷	△		
	1 NM	1.7 NM	2.8 NM	7 NM	
CATEGORY	A	B	C	D	E
LP MDA	360-1		354 (400-1)		
LNAV MDA	420-1	414 (500-1)	420-1½	414 (500-1½)	
CIRCLING	500-1 494 (500-1)	520-1 514 (600-1)	620-1¾ 614 (700-1¾)	620-2 614 (700-2)	620-2¼ 614 (700-2¼)

ELEV 6	D	TDZE 6
REIL Rwy 18, 32 and 36 MIRL Rwy 18-36 HIRL Rwy 14-32		

SC-5, 13 JUN 2024 to 11 JUL 2024

SC-5, 13 JUN 2024 to 11 JUL 2024