

LOC/DME I-UYJ 111.9 Chan 56	APP CRS 273°	Rwy ldg 11245 TDZE 653 Apt Elev 680
--	------------------------	--

ILS RWY 27C (SA CAT I)

CHICAGO O'HARE INTL (ORD)

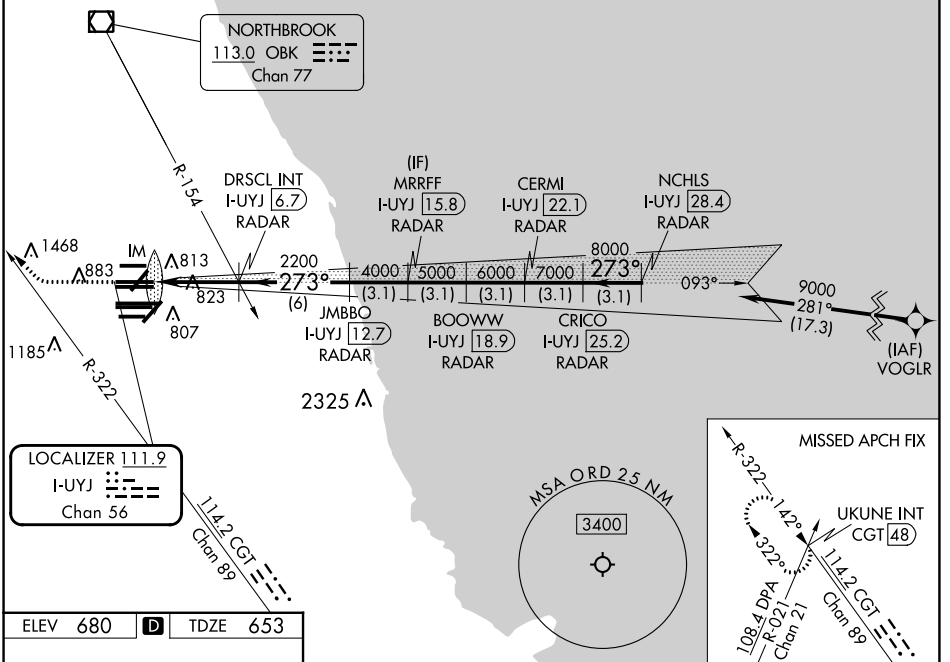
From VOGLR: RNAV 1-GPS required. Aircraft not GPS equipped - RADAR required for procedure entry. DME or RADAR required.

Simultaneous approach authorized. Requires specific OPSPEC, MSPEC, or LOA approval.

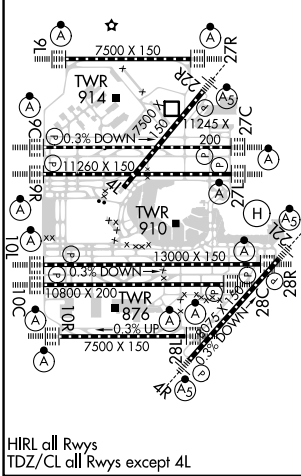
ALSF-2

MISSED APPROACH: Climb to 1100 then climbing right turn to 4000 on heading 290° and CGT R-322 to UKUNE INT/CGT 48 DME and hold.

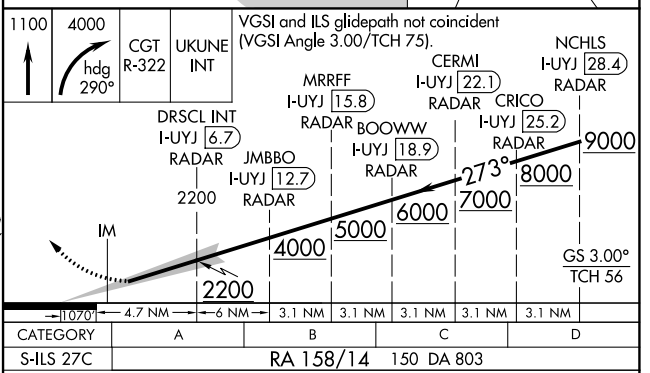
D-ATIS 135.4 282.225	CHICAGO APP CON 119.0 292.125	O'HARE TOWER 121.15 348.0	GND CON (TWR NORTH) 124.125 (TWR SOUTH) 118.05 (ALL TWRS) 226.675	(TWR CENTER) (OBND) 121.75 (IBND) 121.9	CLNC DEL 121.6	CPDLC
--	---	-------------------------------------	---	--	--------------------------	-------



ELEV 680	D	TDZE 653
----------	----------	----------



HIRL all Rwys
TDZ/CL all Rwys except 4L



↑	hdg 290°	CGT UKUNE INT	VGSI and ILS glidepath not coincident (VGSI Angle 3.00/TCH 75).	CERMI I-UYJ 22.1	NCHLS I-UYJ 28.4
DRSCL INT I-UYJ 6.7	MRRFF I-UYJ 15.8	I-UYJ 12.7	JMBBO I-UYJ 18.9	BOOWW I-UYJ 25.2	CRICO I-UYJ 25.2
2200	4000	5000	6000	7000	8000
2200	4000	5000	6000	7000	8000
11070	4.7 NM	6 NM	3.1 NM	3.1 NM	3.1 NM
CATEGORY	A	B	C	D	
S-ILS 27C	RA 158/14		150	DA 803	

SA CATEGORY I ILS - SPECIAL AIRCREW & AIRCRAFT CERTIFICATION REQUIRED

EC-3, 13 JUN 2024 to 11 JUL 2024

EC-3, 13 JUN 2024 to 11 JUL 2024