

LOC/DME I-IAC <b>110.5</b> Chan <b>42</b>	APP CRS <b>273°</b>	Rwy ldg <b>11260</b> TDZE <b>654</b> Apt Elev <b>680</b>
---	------------------------	--

# ILS RWY 27L (SA CAT I)

CHICAGO O'HARE INTL (ORD)

RNP APCH-GPS from VOGLR.

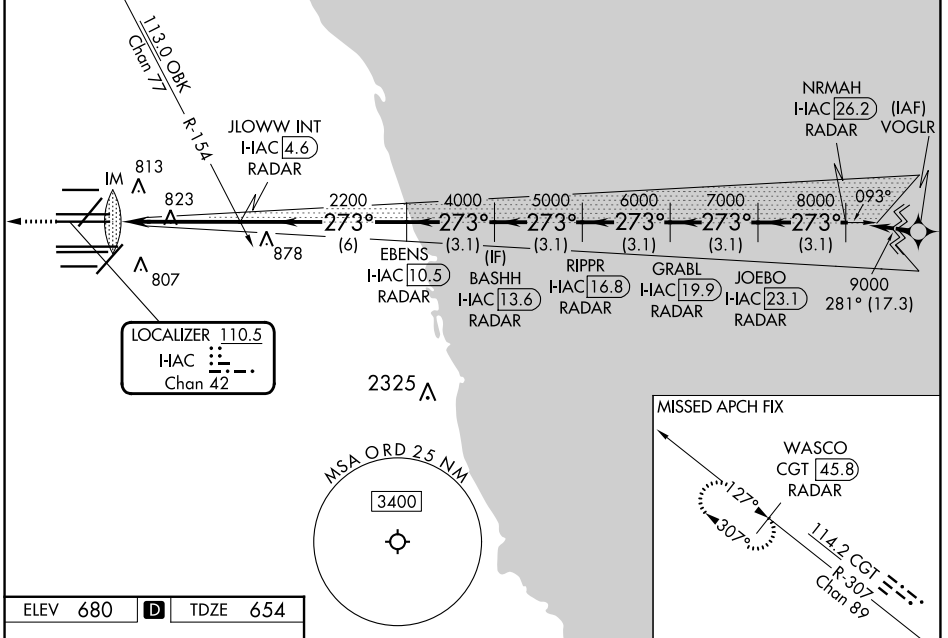
Aircraft not GPS equipped - RADAR required for procedure entry. DME or RADAR required.

ALS-F-2

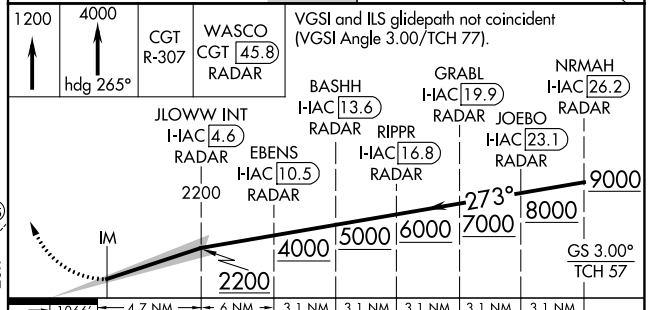
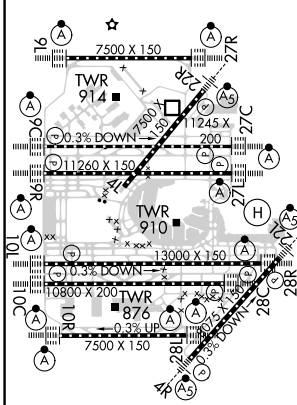
MISSED APPROACH: Climb to 1200 then climb to 4000 on heading 265° and on CGT VORTAC R-307 to WASCO/CGT 45.8 DME/RADAR and hold.

Simultaneous approach authorized. Requires specific OPSPEC, MSPEC, or LOA approval.

D-ATIS <b>135.4</b> <b>282.225</b>	CHICAGO APP CON <b>119.0 292.125</b>	O'HARE TOWER <b>126.9 348.0</b>	GND CON (TWR CENTER) <b>124.125</b> (TWR NORTH) <b>118.05</b> (TWR SOUTH) <b>226.675</b> (ALL TWRs)	CLNC DEL <b>121.75</b> (OBND) <b>121.9</b> (IBND)	CPDLC <b>121.6</b>
--	---	------------------------------------	--	---	-----------------------



ELEV <b>680</b>	<b>D</b>	TDZE <b>654</b>
-----------------	----------	-----------------



CATEGORY	A	B	C	D
S-ILS 27L	RA 165/14 150 DA 804			

**SA CATEGORY I ILS - SPECIAL AIRCREW & AIRCRAFT CERTIFICATION REQUIRED**

EC-3, 13 JUN 2024 to 11 JUL 2024

EC-3, 13 JUN 2024 to 11 JUL 2024