

LOC/DME I-SXH <b>108.95</b> Chan 26(Y)	APP CRS <b>093°</b>	Rwy ldg TDZE <b>669</b> Apt Elev <b>680</b>
--	------------------------	---

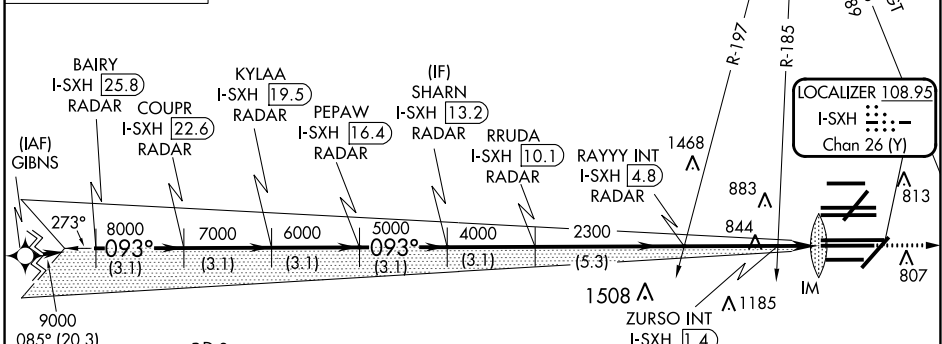
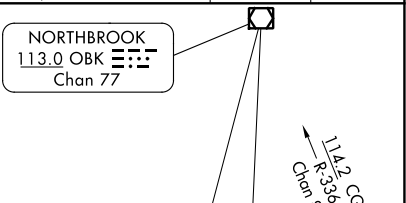
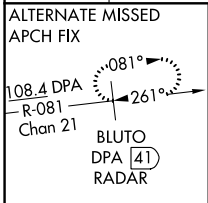
# ILS or LOC RWY 10C

CHICAGO O'HARE INTL (ORD)

From GIBNS: RNAV-1 GPS required.  
 RNAV 1-GPS or RADAR required for procedure entry. DME or RADAR required.  
 Simultaneous approach authorized.

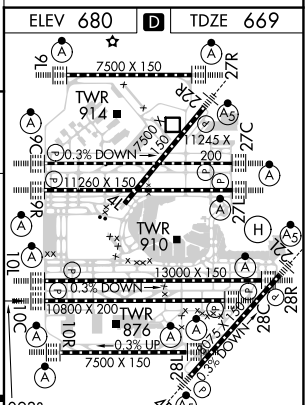
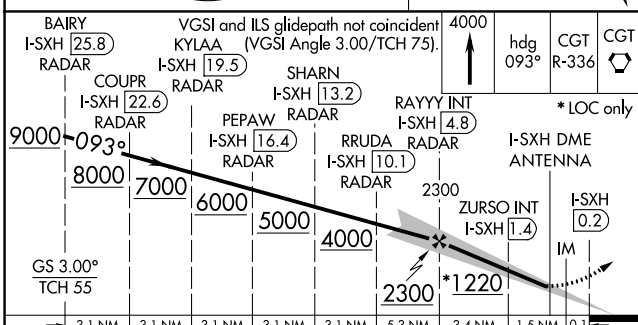
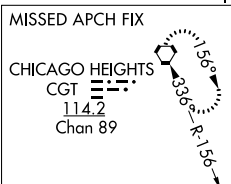
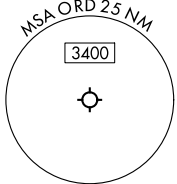
ALSF-2  
 MISSED APPROACH: Climb to 4000 on heading 093° and CGT VORTAC R-336 to CGT VORTAC and hold.

D-ATIS <b>135.4</b> <b>282.225</b>	CHICAGO APP CON <b>119.0 292.125</b>	O'HARE TOWER <b>120.75 348.0</b>	GND CON (TWR CENTER) <b>124.125</b> (TWR NORTH) <b>118.05</b> (TWR SOUTH) <b>226.675</b> (ALL TWRs)	(TWR CENTER) <b>121.75</b> (OBND) <b>121.9</b> (IBND)	CLNC DEL <b>121.6</b>	CPDLC
--	---	-------------------------------------	--	---	--------------------------	-------



EC-3, 13 JUN 2024 to 11 JUL 2024

EC-3, 13 JUN 2024 to 11 JUL 2024



BAIRY I-SXH 25.8 RADAR	VGSI and ILS glidepath not coincident KYLAA (VGSI Angle 3.00/TCH 75).	4000	hdg 093°	CGT R-336	CGT
COUPR I-SXH 22.6 RADAR	SHARN I-SXH 13.2 RADAR	RAYYY INT I-SXH 4.8	* LOC only		
9000 093°	PEPAW I-SXH 16.4 RADAR	RRUDA I-SXH 10.1 RADAR	I-SXH DME ANTENNA		
8000	ZURSO INT I-SXH 1.4	IM	I-SXH 0.2		
7000	3.1 NM	3.1 NM	3.1 NM	3.1 NM	3.1 NM
6000	3.1 NM	3.1 NM	3.1 NM	3.1 NM	3.1 NM
5000	3.1 NM	3.1 NM	3.1 NM	3.1 NM	3.1 NM
4000	3.1 NM	3.1 NM	3.1 NM	3.1 NM	3.1 NM
2300	5.3 NM	3.4 NM	1.5 NM	0.1	
CATEGORY	A		B		C
S-ILS 10C	869/18		200 (200-½)		
S-LOC 10C	1220/24 551 (600-½)		1220/60 551 (600-1¼)		
ZURSO FIX MINIMUMS (DUAL VOR RECEIVERS OR DME REQUIRED)					
S-LOC 10C	1100/24 431 (500-½)		1100/40 431 (500-¾)		
Knots	60	90	120	150	180
Min:Sec	5:00	3:20	2:30	2:00	1:40

HIRL all Rwy's  
 TDZ/CL all Rwy's except 4L  
 FAF to MAP 5 NM