

LOC/DME I-ABU <b>111.75</b> Chan 54 (Y)	APP CRS <b>273°</b>	Rwy ldg <b>7500</b> TDZE <b>664</b> Apt Elev <b>680</b>
---	------------------------	---

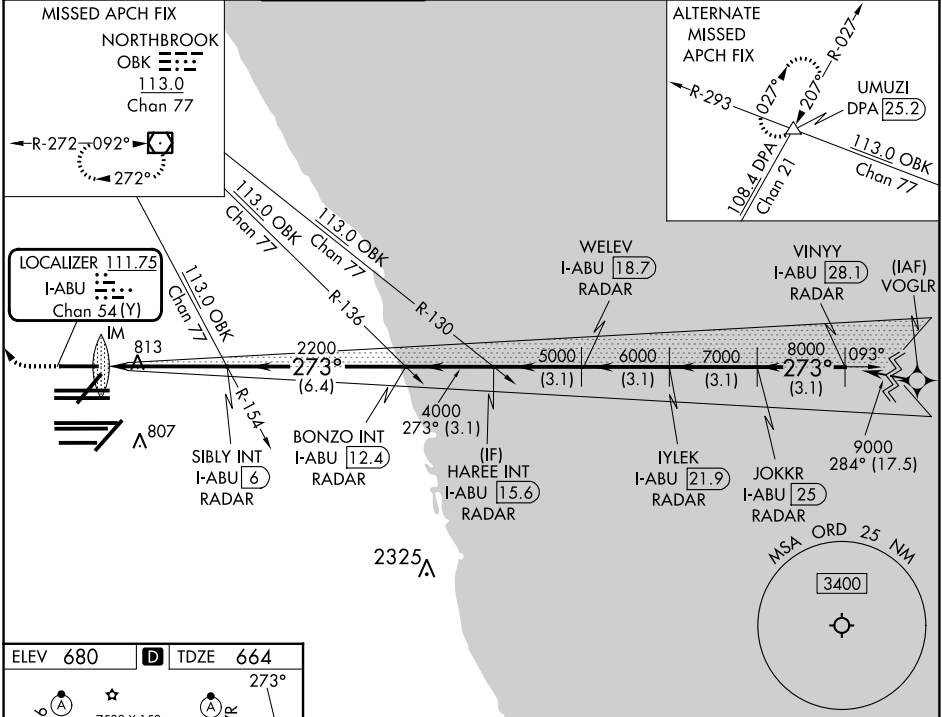
# ILS or LOC RWY 27R

CHICAGO O'HARE INTL (ORD)

RNAV-1 GPS or RADAR required for procedure entry. RADAR or DME required. ALSF-2  
MISSED APPROACH: Climb to 1100 then climbing right turn to 4000 direct OBK VOR/DME and hold, continue climb-in-hold to 4000.

Simultaneous approach authorized.

D-ATIS <b>135.4</b> <b>282.225</b>	CHICAGO APP CON <b>119.0 292.125</b>	O'HARE TOWER <b>128.15 348.0</b>	<b>124.125</b> (TWR NORTH) <b>118.05</b> (TWR SOUTH) <b>226.675</b> (ALL TWRs)	GND CON (TWR CENTER) <b>121.75</b> (OBND) <b>121.9</b> (IBND)	CLNC DEL <b>121.6</b>	CPDLC
--	---	-------------------------------------	--	---	--------------------------	-------



EC-3, 13 JUN 2024 to 11 JUL 2024

EC-3, 13 JUN 2024 to 11 JUL 2024

