

ILS PRM RWY 10C (CLOSE PARALLEL) CHICAGO O'HARE INTL (ORD)

LOC/DME I-SXH 108.95 Chan 26(Y)	APP CRS 093°	Rwy Ldg 10540 TDZE 669 Apt Elev 680
--	------------------------	--

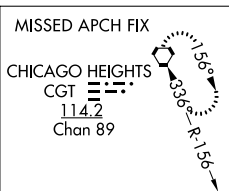
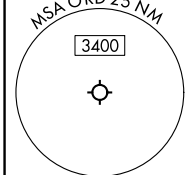
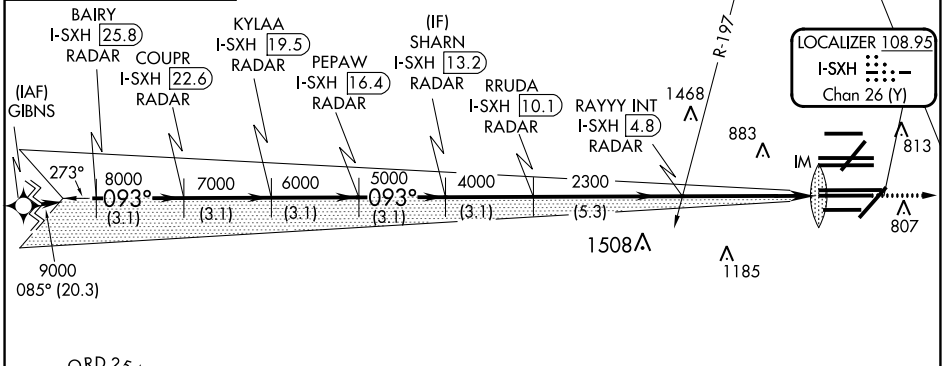
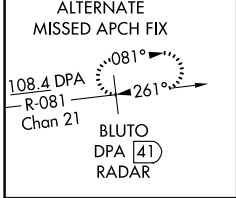
RNAV 1-GPS or RADAR required for procedure entry. DME or RADAR required.
From GIBNS: RNAV-1 GPS required.

Simultaneous approach authorized.
Use of FD or AP required during simultaneous operations.
Dual VHF comm required. See additional requirements on AAUP.

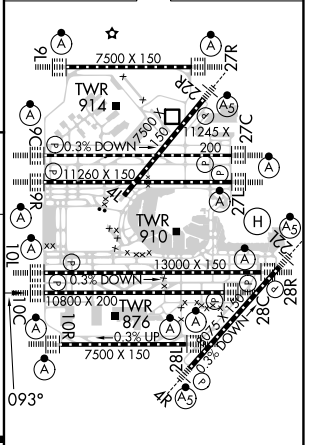
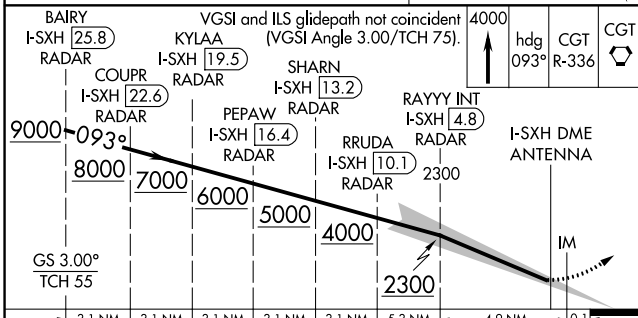
ALSF-2

MISSED APPROACH: Climb to 4000 on heading 093° and CGT VORTAC R-336 to CGT VORTAC and hold.

D-ATIS 135.4 282.225	CHICAGO APP CON 119.0 292.125	O'HARE TOWER 120.75 348.0 PRM 119.625	GND CON (TWR CENTER) 124.125 (TWR NORTH) 118.05 (TWR SOUTH) 226.675 (ALL TWRs)	(TWR CENTER) 121.75 (OBND) 121.9 (IBND)	CLNC DEL 121.6	CPDLC
--	---	---	--	---	--------------------------	-------



ELEV 680	TDZE 669
----------	----------



CATEGORY	A	B	C	D
S-ILS 10C		869/18	200 (200-1/2)	

EC-3, 13 JUN 2024 to 11 JUL 2024

EC-3, 13 JUN 2024 to 11 JUL 2024