


ILS PRM RWY 28C (CAT II & III) (CLOSE PARALLEL) CHICAGO O'HARE INTL (ORD)

LOC/DME I-VZE 108.95 Chan 26 (Y)	APP CRS 273°	Rwy ldg 10800 TDZE 651 Apt Elev 680
---	------------------------	--

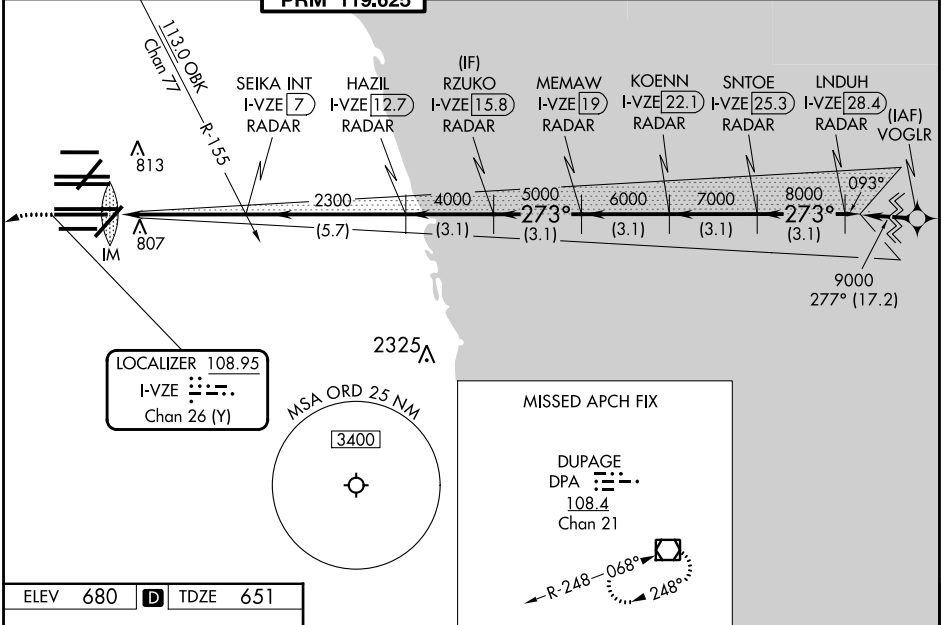
Aircraft not GPS equipped - RADAR required for procedure entry.
DME or RADAR required.
From VOGLR: RNAV 1-GPS required.

ALSIF-2


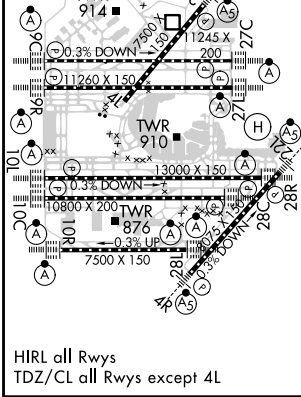
MISSED APPROACH:
Climb to 1100 then climbing
left turn to 4000 on heading
215° and DPA VOR/DME
R-082 to DPA VOR/DME
and hold.


Simultaneous approach authorized. Use of FD or AP required during simultaneous operations. Dual VHF comm required. See additional requirements on AAUP.
CAT II: RVR 1000 authorized with specific OPSPEC, MSPEC, or LOA approval and use of autoland or HUD to touchdown.

D-ATIS 135.4 282.225	CHICAGO APP CON 119.0 292.125	O'HARE TOWER 120.75 348.0 PRM 119.625	GND CON (TWR NORTH) 124.125 (TWR SOUTH) 118.05 (ALL TWRs) 226.675	(TWR CENTER) (OBND) 121.75 (IBND) 121.9	CLNC DEL 121.6	CPDLC
--	---	---	---	---	--------------------------	-------



ELEV 680	D	TDZE 651
-----------------	----------	-----------------



1100	4000	DPA R-082	DPA	VGSI and ILS glidepath not coincident (VGSI Angle 3.00/TCH 80).	LNDUH I-VZE 28.4 RADAR	
hdg 215°		<input checked="" type="checkbox"/>				
					RZUKO I-VZE 15.8 RADAR KOENN I-VZE 22.1 RADAR SNTOE I-VZE 25.3 RADAR	
					SEIKA INT I-VZE 7 RADAR HAZIL I-VZE 12.7 RADAR MEMAW I-VZE 19 RADAR	
					2300 4000 5000 6000 7000 8000 9000 273°	
					GS 3.00° TCH 55	
					1044' - 5 NM - 5.7 NM - 3.1 NM - 3.1 NM - 3.1 NM - 3.1 NM - 3.1 NM	
CATEGORY	A		B		C	
S-ILS 28C	CAT II		RA 105/12		100 DA 751	
S-ILS 28C	CAT III		RVR 06			

CATEGORY II & III ILS - SPECIAL AIRCREW & AIRCRAFT CERTIFICATION REQUIRED