

LOC/DME I-BYW 110.9 Chan 46	APP CRS 091°	Rwy Idg 7500 TDZE 680 Apt Elev 680
---	------------------------	---

ILS PRM Y RWY 10R (CLOSE PARALLEL)

CHICAGO O'HARE INTL (ORD)

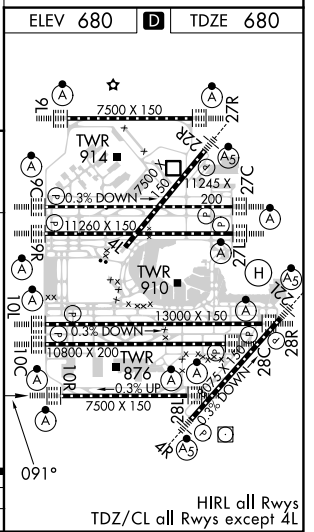
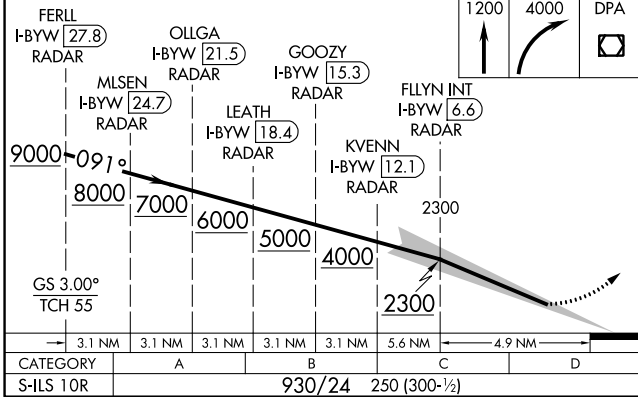
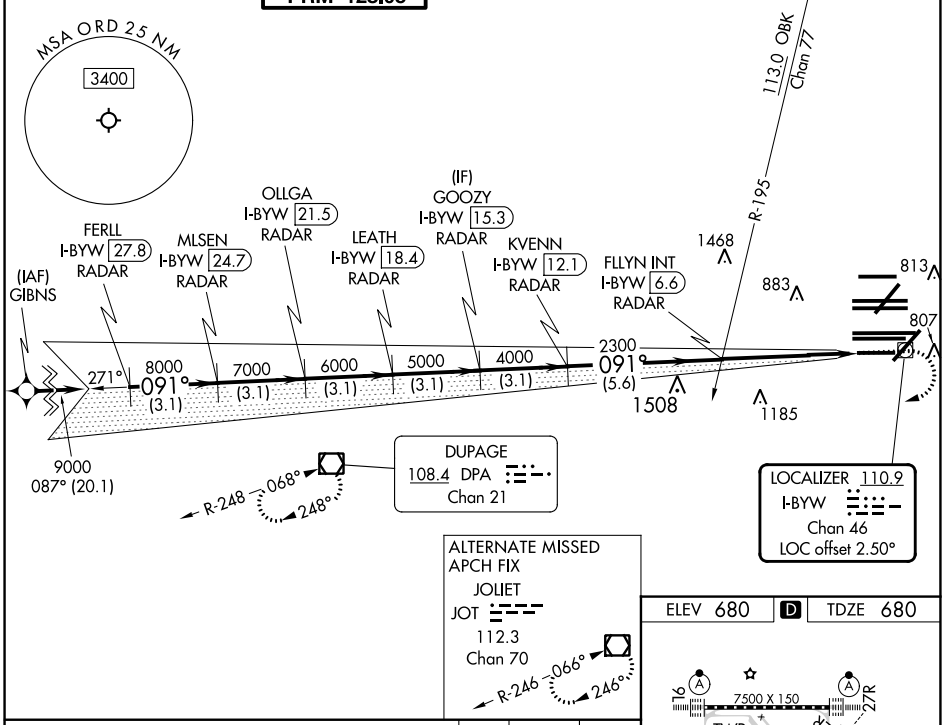
RNAV 1-GPS or RADAR required for procedure entry. DME or RADAR required.
From GIBNS: RNAV-1 GPS required.

Simultaneous approach authorized. Use of FD or AP required during simultaneous operations. Dual VHF Comm required. See additional requirements on AAUP.



MISSED APPROACH: Climb to 1200 then climbing right turn to 4000 direct DPA VOR/DME and hold.

D-ATIS 135.4 282.225	CHICAGO APP CON 119.0 292.125	O'HARE TOWER 133.0 348.0 PRM 128.05	GND CON (TWR NORTH) 124.125 (TWR SOUTH) 118.05 (ALL TWRS) 226.675	(TWR CENTER) (OBND) 121.75 (IBND) 121.9	CLNC DEL 121.6	CPDLC
--	---	---	---	--	--------------------------	-------



EC-3, 13 JUN 2024 to 11 JUL 2024

EC-3, 13 JUN 2024 to 11 JUL 2024