

GOLDSBORO, NORTH CAROLINA

# HI-ILS or LOC Z RWY 8

LOC I-GSB <b>109.3</b>	APCH CRS <b>081°</b>	Rwy ldg <b>11,760</b> TDZE <b>73</b> Arprt Elev <b>109</b>
---------------------------	-------------------------	--

[USAF]

SEYMOUR JOHNSON AFB (KGSB)

RADAR or DME required.

ALSF-1

MISSED APPROACH: Climb to 2300 via GSB R-081 to ZILOB and hold.

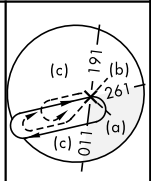
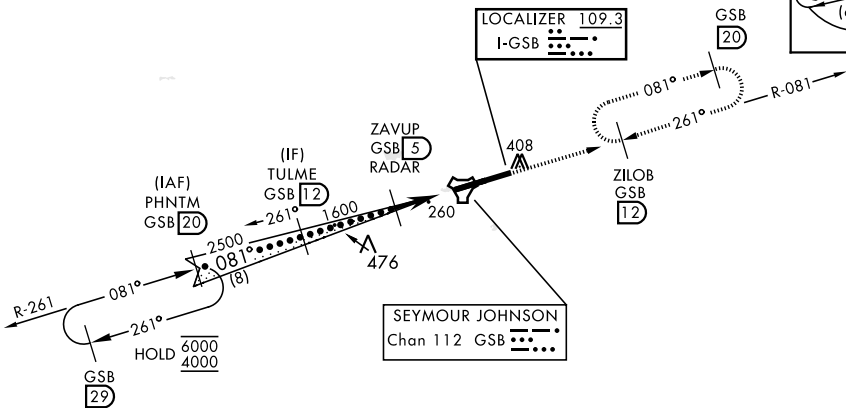
\* When ALS inop, increase RVR to 40 and vis to 3/4 mile.  
 \*\* When ALS inop, increase vis to 1 3/8 miles.



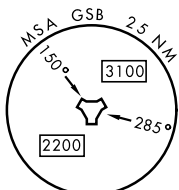
ATIS ★ <b>317.625</b>	APP CON <b>123.7 290.9</b> (258°- 110°) <b>119.7 273.6</b> (111°- 257°)	TOWER ★ <b>126.25 370.875</b>	GND CON <b>132.45 275.8</b>	CLNC DEL <b>128.025 270.8</b>
--------------------------	---	----------------------------------	--------------------------------	----------------------------------

\*\*\* Circling N of Rwy 8-26 not authorized.

453



SEYMOUR JOHNSON  
Chan 112 GSB

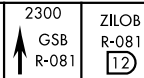


SE-2, 13 JUN 2024 to 11 JUL 2024

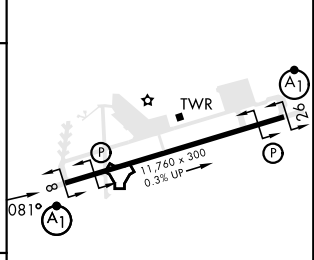
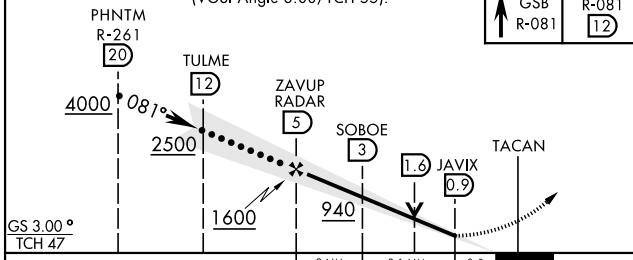
SE-2, 13 JUN 2024 to 11 JUL 2024

EMERG SAFE ALT 100 NM 3700

VGSI and ILS glidepath not coincident (VGSI Angle 3.00/TCH 55).



ELEV 109	TDZE 73
----------	---------



CATEGORY	C	D	E
S-ILS 8*	273/24	200	(200-1/2)
S-LOC 8**	520/45	447	(500-3/4)
*** CIRCLING	680-1 1/2	740-2	740-2 1/4
	571 (600-1 1/2)	631 (700-2)	631 (700-2 1/4)

HIRL Rwy 8-26					
FAF to MAP 4.1 NM					
Knots	120	140	160	180	200
Min:Sec	2:03	1:45	1:32	1:22	1:14

GOLDSBORO, NORTH CAROLINA

35° 20' N-77° 58' W

SEYMOUR JOHNSON AFB (KGSB)

Amtd 8 03NOV22

# HI-ILS or LOC Z RWY 8