

APP CRS	Rwy Idg	<b>6608</b>
<b>308°</b>	TDZE	<b>1844</b>
	Apt Elev	<b>1847</b>

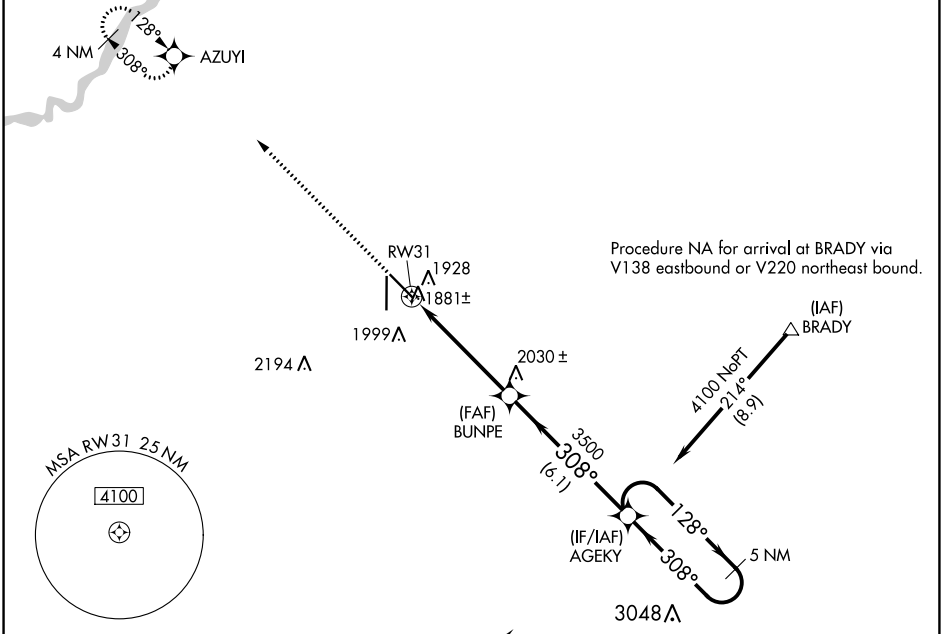
# RNAV (GPS) RWY 31

CENTRAL NEBRASKA RGNL (GRI)

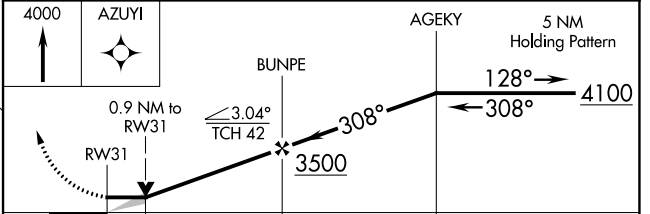
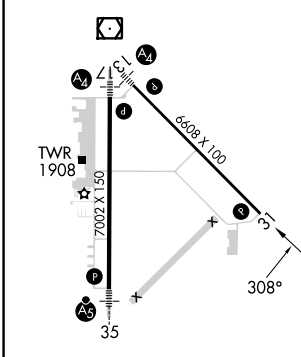
**▽** DME/DME RNP-0.3 NA. When local altimeter setting not received, use Aurora altimeter setting and increase all MDA 60 feet; increase LNAV Cats C/D visibility 1/8 SM and Circling Cats C/D visibility 1/4 SM. VDP NA when using Aurora altimeter setting.

**▲** MISSED APPROACH: Climb to 4000 direct AZUYI and hold.

ATIS <b>127.4</b>	MINNEAPOLIS CENTER <b>119.4 278.8</b>	GRAND ISLAND TOWER ★ <b>118.2</b> (CTAF) <b>0 259.3</b>	GND CON <b>121.9 259.3</b>	CLNC DEL <b>126.05</b> (when tower closed)	UNICOM <b>122.95</b>
----------------------	--	--	-------------------------------	---	-------------------------



ELEV	<b>1847</b>	<b>D</b>	TDZE	<b>1844</b>
------	-------------	----------	------	-------------



CATEGORY	A	B	C	D
LNAV MDA	2180-1 336 (400-1)			
CIRCLING	2300-1 453 (500-1)	2400-1½ 553 (600-1½)	2560-2¼ 713 (800-2¼)	

MIRL Rwy 13-31 **1**  
HIRL Rwy 17-35 **1**  
REL Rwy 31 **1**

NC-2, 13 JUN 2024 to 11 JUL 2024

NC-2, 13 JUN 2024 to 11 JUL 2024