

WAAS CH 86799 W35A	APP CRS 353°	Rwy Idg 7002 TDZE 1847 Apt Elev 1847
----------------------------------------	------------------------	-----------------------------------------------------------------

RNAV (GPS) RWY 35

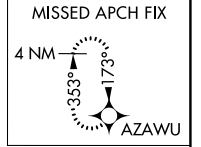
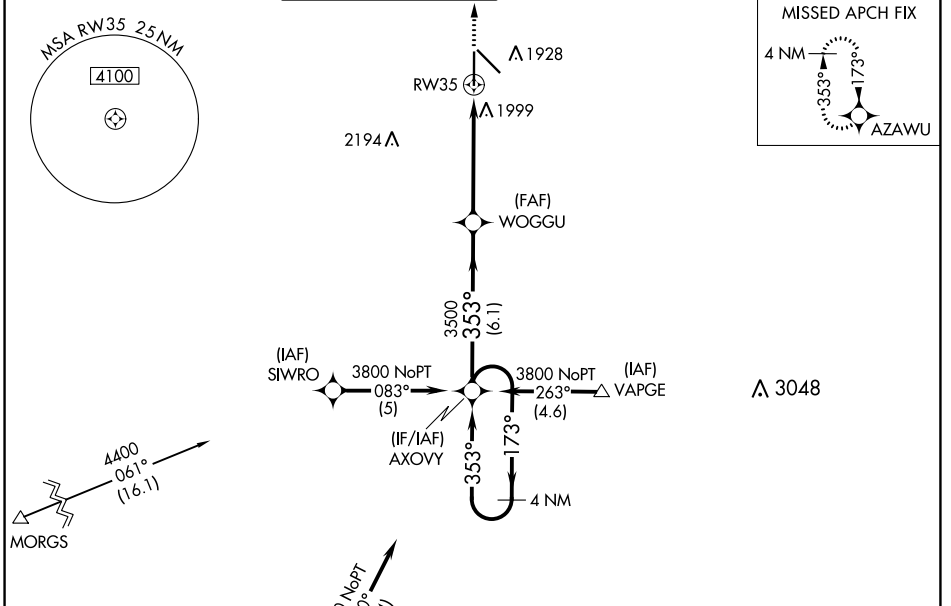
CENTRAL NEBRASKA RGNL (G.R.I)

▼ DME/DME RNP-0.3 NA. Baro-VNAV NA below -18°C (0°F). When local altimeter setting is not received, use Aurora altimeter setting and increase LPV DA to 2138 feet, LNAV/VNAV DA to 2324 feet, and all MDA 60 feet; increase LNAV Cat C visibility to RVR 5000 and Circling Cats C/D ¼ SM. Baro-VNAV and VDP NA when using Aurora altimeter setting. For inop MALSR increase LPV visibility to RVR 4000 all Cats.

MALSR

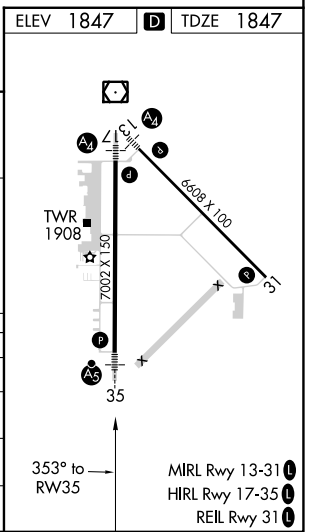
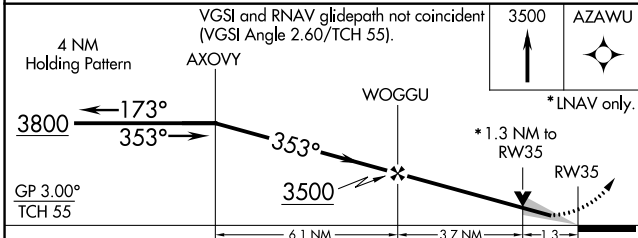
MISSED APPROACH:
Climb to 3500 direct AZAWU and hold.

ATIS 127.4	MINNEAPOLIS CENTER 119.4 278.8	GRAND ISLAND TOWER* 118.2 (CTAF) 259.3	GND CON 121.9 259.3	CLNC DEL 121.9 (when tower closed)	UNICOM 122.95
----------------------	------------------------------------------	--------------------------------------------------	-------------------------------	-------------------------------------------------	-------------------------



Procedure NA for arrival at HSI VOR/DME on airway radials 006 CW 068.

(IAF) HASTINGS HSI



CATEGORY	A	B	C	D
LPV DA		2097/24	250 (300-½)	
LNAV/VNAV DA		2283/50	436 (500-1)	
LNAV MDA	2260/24	413 (500-½)	2260/40 413 (500-¾)	2260/50 413 (500-1)
CIRCLING	2300-1½	453 (500-1½)	2400-1½ 553 (600-1½)	2560-2¼ 713 (800-2¼)

NC-2, 13 JUN 2024 to 11 JUL 2024

NC-2, 13 JUN 2024 to 11 JUL 2024