

VOR/DME GRI 112.0 Chan 57	APP CRS 173°	Rwy Idg TDZE 1844 Apt Elev 1847
---	------------------------	---

VOR RWY 17

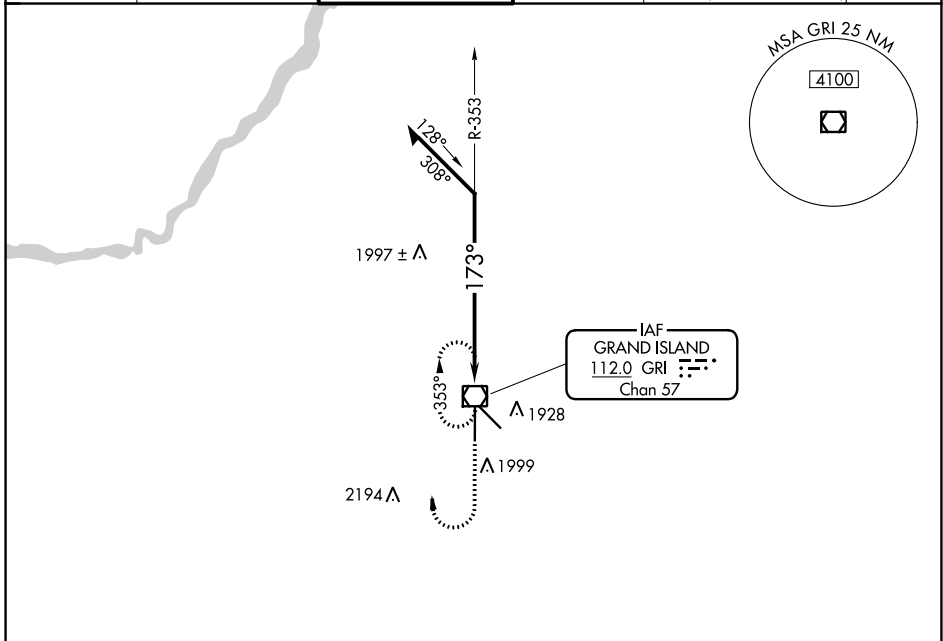
CENTRAL NEBRASKA RGNL (GRI)

⚠ When local altimeter setting not received, use Aurora altimeter setting and increase all MDA 60 feet, increase S-17 Cats C/D and Circling Cats C/D visibility ¼ SM. Inop table does not apply to S-17 Cat C.



MISSED APPROACH: Climb to 3600, then right turn direct GRI VOR/DME and hold.

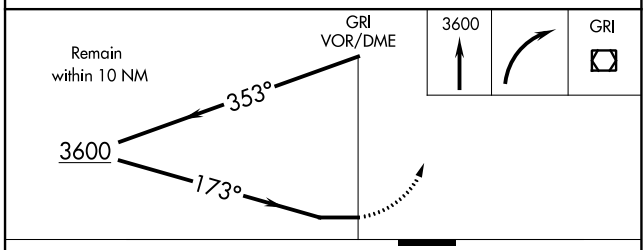
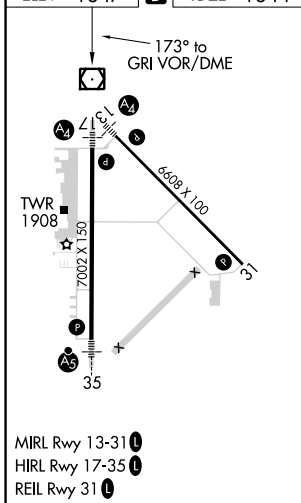
ATIS 127.4	MINNEAPOLIS CENTER 119.4 278.8	GRAND ISLAND TOWER * 118.2 (CTAF) 259.3	GND CON 121.9 259.3	CLNC DEL 121.9 126.05 (when tower closed)	UNICOM 122.95
----------------------	--	---	-------------------------------	---	-------------------------



NC-2, 13 JUN 2024 to 11 JUL 2024

NC-2, 13 JUN 2024 to 11 JUL 2024

ELEV 1847	D	TDZE 1844
-----------	----------	-----------



CATEGORY	A	B	C	D
S-17	2300-¾	456 (500-¾)	2300-¼ 456 (500-¼)	2300-½ 456 (500-½)
CIRCLING	2300-1	453 (500-1)	2400-½ 553 (600-½)	2560-¼ 713 (800-¼)