

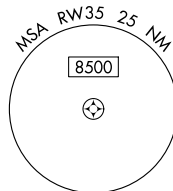
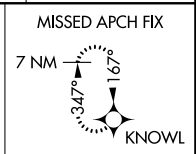
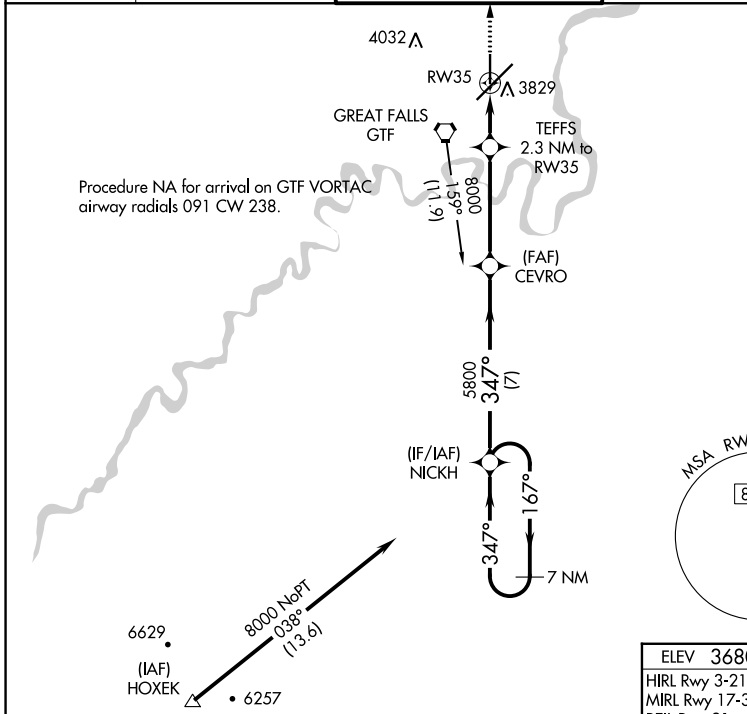
WAAS CH 82240 W35A	APP CRS 347°	Rwy Idg TDZE Apt Elev	5400 3668 3680
--	------------------------	-----------------------------	---

RNAV (GPS) RWY 35

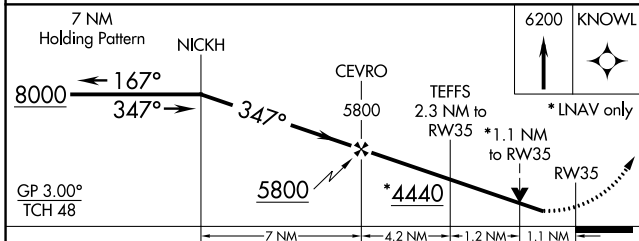
GREAT FALLS INTL (GTF)

RNP APCH - GPS.		MISSED APPROACH: Climb to 6200 direct KNOWL and hold.	
<p>⚠ For uncompensated Baro-VNAV systems, LNAV/VNAV NA below -26°C or above 52°C. Rwy 35 helicopter visibility reduction below ¼ SM NA.</p>			

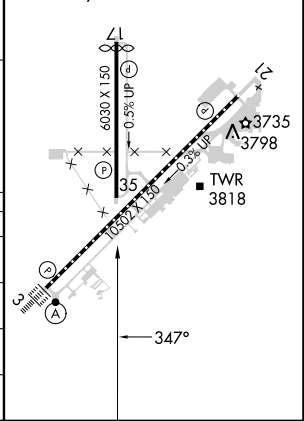
ATIS 126.6 269.0	GREAT FALLS APP CON 128.6 379.175	GREAT FALLS TOWER 118.7 282.2	GND CON 121.7 348.6	CLNC DEL 121.7 348.6
----------------------------	---	---	-------------------------------	--------------------------------



Δ 7080 \pm



ELEV 3680	D	TDZE 3668
HIRL Rwy 3-21		
MIRL Rwy 17-35		
REIL Rwy 21		
TDZ/CL Rwy 3		



CATEGORY	A	B	C	D
LPV DA		3918-¾	250 (300-¾)	
LNAV/VNAV DA		4086-1½	418 (500-1½)	
LNAV MDA	4080-1	412 (400-1)	4080-1½	412 (400-1½)
C CIRCLING	4140-1	460 (500-1)	4340-1¾ 660 (700-1¾)	4420-2¼ 740 (800-2¼)

NW-1, 13 JUN 2024 to 11 JUL 2024

NW-1, 13 JUN 2024 to 11 JUL 2024