

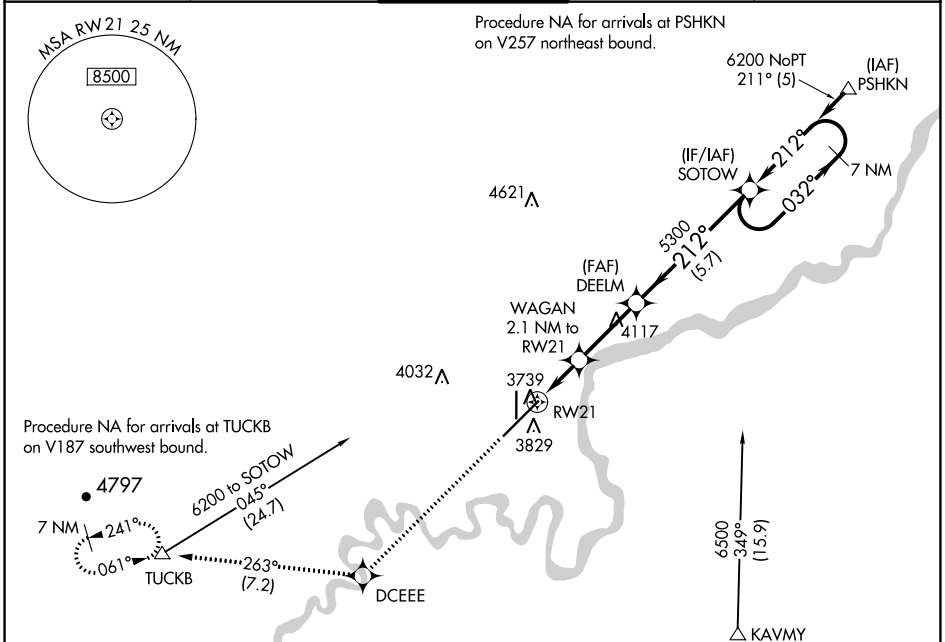
WAAS CH 90221 W21A	APP CRS 212°	Rwy Idg 10502 TDZE 3669 Apt Elev 3680
--	------------------------	--

RNAV (GPS) Y RWY 21

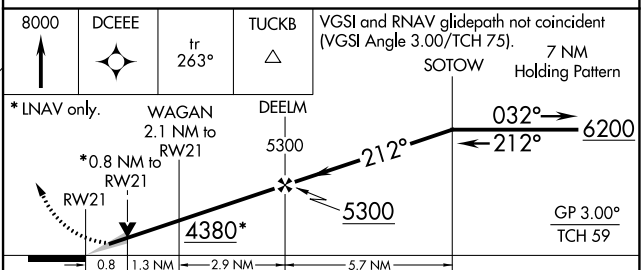
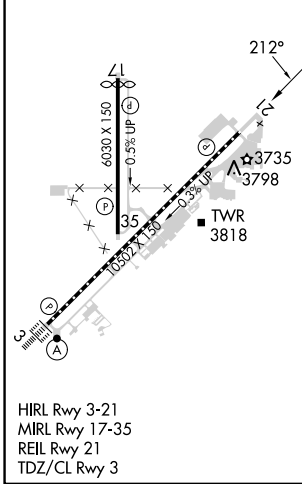
GREAT FALLS INTL (GTF)

RNP APCH - GPS.	MISSED APPROACH: Climb to 8000 direct DCEEE and on track 263° to TUCKB and hold, continue climb-in-hold to 8000.
<p>▼ For uncompensated Baro-VNAV systems, LNAV/VNAV NA below -24°C or above 49°C.</p> <p>▲</p>	

ATIS 126.6 269.0	GREAT FALLS APP CON 128.6 379.175	GREAT FALLS TOWER 118.7 282.2	GND CON 121.7 348.6	CLNC DEL 121.7 348.6
----------------------------	---	---	-------------------------------	--------------------------------



ELEV 3680	D	TDZE 3669
-----------	----------	-----------



CATEGORY	A	B	C	D
LPV DA		3869/40	200 (200-3/4)	
LNAV/VNAV DA		3927/45	258 (300-7/8)	
LNAV MDA	4000/55	331 (400-1)	4000/50	331 (400-1)
C CIRCLING	4140-1	460 (500-1)	4340-1 3/4 660 (700-1 3/4)	4420-2 1/4 740 (800-2 1/4)

NW-1, 13 JUN 2024 to 11 JUL 2024

NW-1, 13 JUN 2024 to 11 JUL 2024