

WAAS CH <b>86515</b> <b>W05B</b>	APP CRS <b>054°</b>	Rwy Idg <b>9000</b> TDZE <b>916</b> Apt Elev <b>926</b>
----------------------------------------	------------------------	---------------------------------------------------------------

# RNAV (GPS) RWY 5L

PIEDMONT TRIAD INTL (GSO)

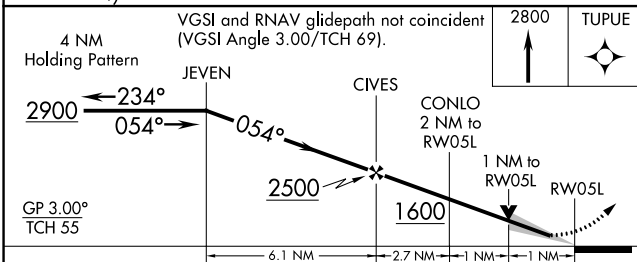
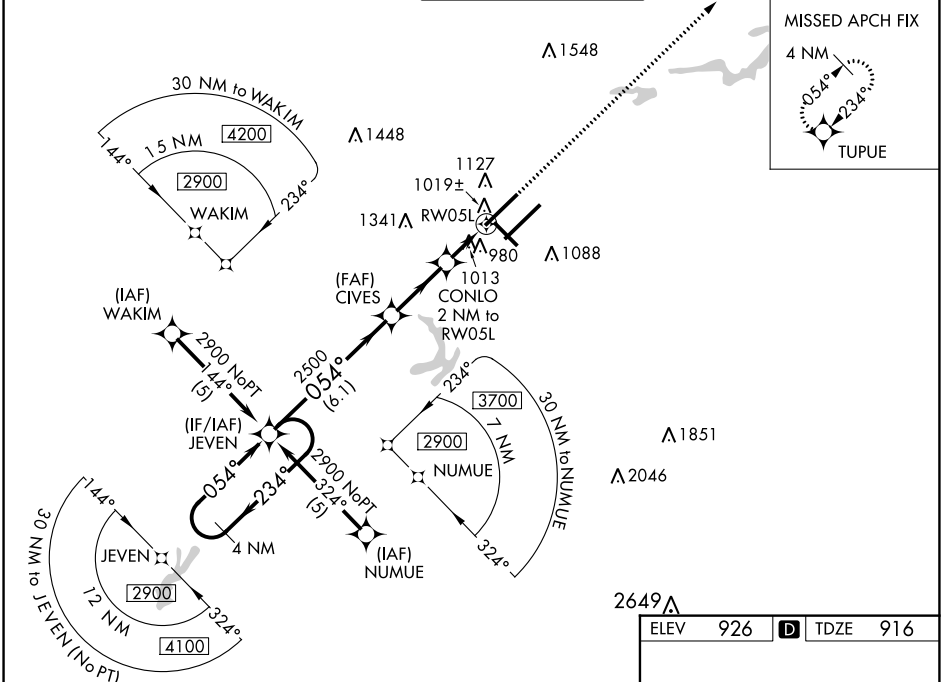
RNP APCH - GPS.

⚠ For inop ALS, increase LNAV Cat D visibility to RVR 6000. For uncompensated Baro-VNAV systems, LNAV/VNAV NA below -1.6°C or above 47°C. Simultaneous approach authorized with ILS or LOC Rwy 5R, ILS Rwy 5R (CAT II). Use of FD or AP required during simultaneous operations. LNAV procedure NA during simultaneous operations.

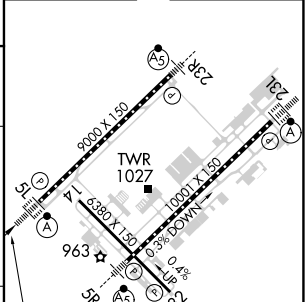


MISSED APPROACH:  
Climb to 2800 direct TUPUE and hold.

D-ATIS <b>128.55</b>	GREENSBORO APP CON <b>124.35 269.225</b> (250°-049°) <b>126.6 327.075</b> (050°-249°)	GREENSBORO TOWER <b>119.1 290.325</b>	GND CON <b>121.9 348.6</b>	CLNC DEL <b>121.75</b>
-------------------------	---------------------------------------------------------------------------------------------	------------------------------------------	-------------------------------	---------------------------



ELEV 926	<b>D</b> TDZE 916
----------	-------------------



CATEGORY	A	B	C	D
LPV DA	1116/18		200 (200-½)	
LNAV/VNAV DA	1367/50		451 (500-1)	
LNAV MDA	1300/24	384 (400-½)	1300/35 384 (400-¾)	1300/50 384 (400-1)
<b>C</b> CIRCLING	1440-1	514 (600-1)	1700-2¼ 774 (800-2¼)	1700-2½ 774 (800-2½)

TDZ/CL Rwy 5L, 23R and 23L  
REIL Rwy 32  
HIRL Rwy 14-32, 5R-23L and 5L-23R

SE-2, 13 JUN 2024 to 11 JUL 2024

SE-2, 13 JUN 2024 to 11 JUL 2024