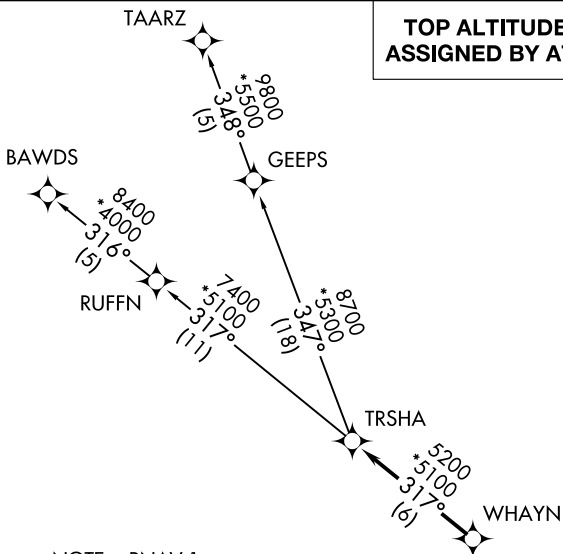


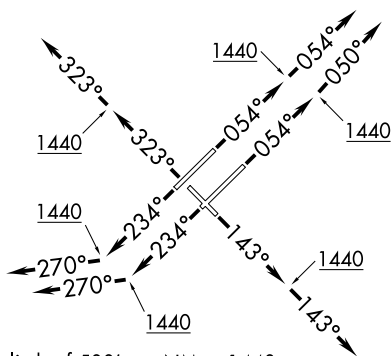
TRSHA ONE DEPARTURE (RNAV)

**TOP ALTITUDE:
ASSIGNED BY ATC**

D-ATIS 128.55
CLNC DEL 121.75
GND CON
121.9 348.6
GREENSBORO TOWER
119.1 290.325
GREENSBORO DEP CON
124.35 269.225 (250°-049°)
126.6 327.075 (050°-249°)



- NOTE: RNAV 1.
- NOTE: DME/DME/IRU or GPS required.
- NOTE: RADAR required.
- NOTE: Transponder code will be issued via PDC or Greensboro CLNC DEL.
- NOTE: If unable to accept climb rates, advise ATC on initial contact.



TAKEOFF MINIMUMS

Rwys 5L/R, 14, 23L/R, 32: Standard with minimum climb of 500' per NM to 1440.

NOTE: Chart not to scale.



DEPARTURE ROUTE DESCRIPTION

- TAKEOFF RWY 5L: Climb heading 054° to 1440, then on heading 054°. Thence. . .
- TAKEOFF RWY 5R: Climb heading 054° to 1440, then on heading 050°. Thence. . .
- TAKEOFF RWY 14: Climb heading 143° to 1440, then on heading 143°. Thence. . .
- TAKEOFF RWY 23L/R: Climb heading 234° to 1440, then on heading 270°. Thence. . .
- TAKEOFF RWY 32: Climb heading 323° to 1440, then on heading 323°. Thence. . .

. . . expect RADAR vectors to WHAYN, then on track 317° to TRSHA, then on assigned transition. Maintain altitude assigned by ATC. Expect clearance to filed altitude within ten (10) minutes after departure.

BAWDS TRANSITION (TRSHA1.BAWDS)

TAARZ TRANSITION (TRSHA1.TAARZ)