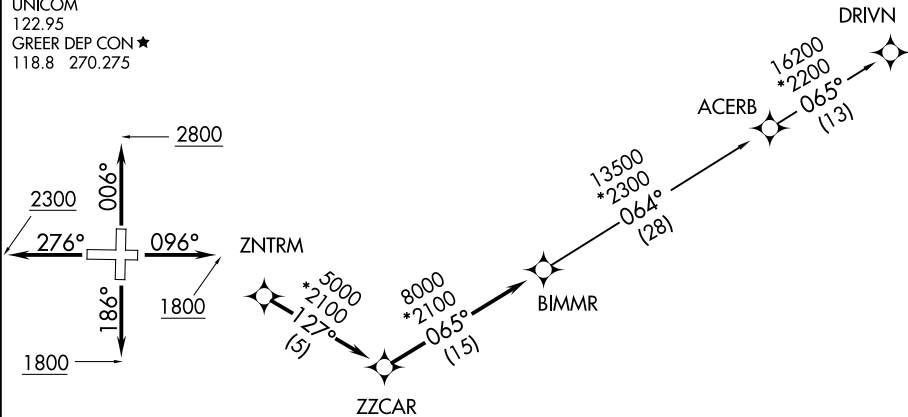


BIMMR THREE DEPARTURE (RNAV)

RNAV 1 - DME/DME/IRU or GPS.
RADAR required.

**TOP ALTITUDE:
3000**

ATIS ★
127.075
GND CON
121.25
GREENVILLE TOWER ★
119.9 257.7
UNICOM
122.95
GREER DEP CON ★
118.8 270.275



TAKEOFF MINIMUMS

Rwys 1, 19: Standard.

Rwy 10: 300-1 $\frac{1}{8}$ or standard with minimum climb of 355' per NM to 1300.

Rwy 28: 300-2 $\frac{1}{2}$ or standard with minimum climb of 221' per NM to 1500, or alternatively, with standard takeoff minimums and a normal 200' per NM climb gradient, takeoff must occur no later than 1900' prior to DER.

NOTE: Do not exceed 250K until advised by ATC.

NOTE: For turbojets only.

NOTE: Chart not to scale.

SE-2, 13 JUN 2024 to 11 JUL 2024

SE-2, 13 JUN 2024 to 11 JUL 2024



DEPARTURE ROUTE DESCRIPTION

TAKEOFF RUNWAY 1: Climb on heading 006° to 2800 before turning west or northwest for RADAR vectors to ZNTRM, thence. . . .

TAKEOFF RUNWAY 10: Climb on heading 096° to 1800 before turning west or northwest for RADAR vectors to ZNTRM, thence. . . .

TAKEOFF RUNWAY 19: Climb on heading 186° to 1800 before turning north for RADAR vectors to ZNTRM, thence. . . .

TAKEOFF RUNWAY 28: Climb on heading 276° to 2300 before turning north or northwest for RADAR vectors to ZNTRM, thence. . . .

. . . on depicted route to BIMMR. Then on assigned transition. Maintain 3000. Expect clearance to filed altitude within 10 minutes after departure.

ACERB TRANSITION (BIMMR3.ACERB)

DRIVN TRANSITION (BIMMR3.DRIVN)