

WAAS CH <b>93837</b> <b>W19A</b>	APP CRS <b>186°</b>	Rwy Idg <b>5393</b> TDZE <b>1048</b> Apt Elev <b>1048</b>
----------------------------------------	------------------------	-----------------------------------------------------------------

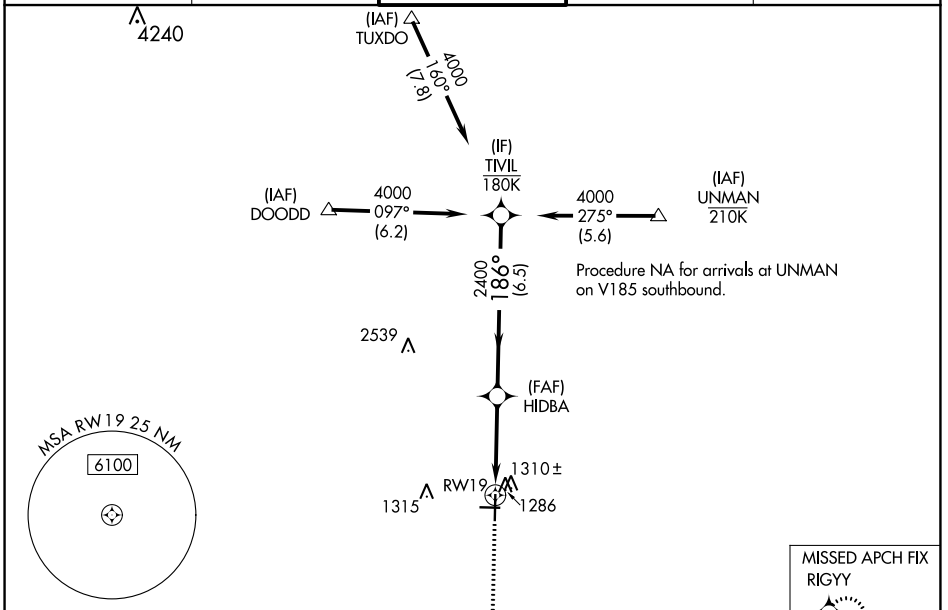
# RNAV (GPS) RWY 19

GREENVILLE DOWNTOWN (GMU)

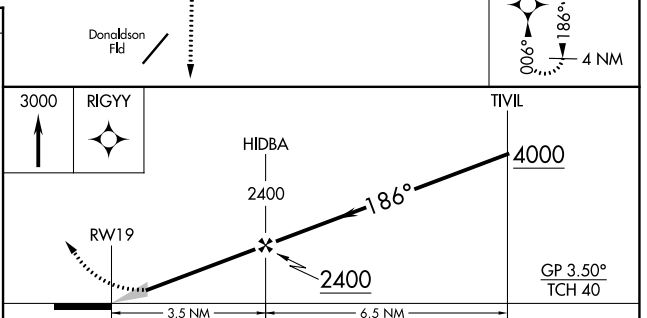
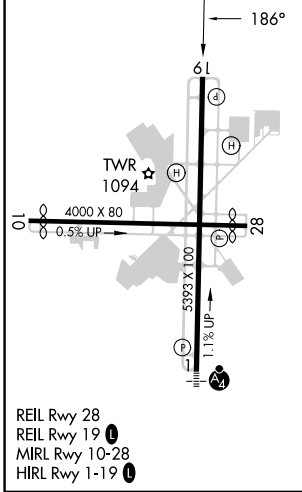
**⚠** For uncompensated Baro-VNAV systems, LNAV/VNAV NA below -6°C (22°F) or above 54°C (130°F).  
**⚠** DME/DME RNP-0.3 NA. When local altimeter setting not received, use Greer altimeter setting and increase all DA 29 feet and all MDA 40 feet; increase LPV and LNAV/VNAV all Cats visibility 1/8 mile, increase LNAV Cats C/D and Circling Cat C visibility 1/4 mile.

MISSED APPROACH: Climb to 3000 direct RIGYY and hold.

ATIS ★ <b>127.075</b>	GREER APP CON ★ <b>118.8 270.275</b>	<b>GREENVILLE TOWER ★</b> <b>119.9 (CTAF) 0 257.7</b>	GND CON <b>121.25</b>	UNICOM <b>122.95</b>
--------------------------	-----------------------------------------	----------------------------------------------------------	--------------------------	-------------------------



ELEV 1048	<b>D</b>	TDZE 1048
-----------	----------	-----------



CATEGORY	A	B	C	D
LPV DA	1373-1		325 (400-1)	NA
LNAV/VNAV DA	1480-1¼		432 (500-1¼)	NA
LNAV MDA	1560-1	512 (600-1)	1560-1⅓	512 (600-1⅓)
<b>C</b> CIRCLING	1620-1	572 (600-1)	1780-2 732 (800-2)	1860-2¾ 812 (900-2¾)

SE-2, 13 JUN 2024 to 11 JUL 2024

SE-2, 13 JUN 2024 to 11 JUL 2024