

| | | |
|--|------------------------|---|
| WAAS CH 87037 W28A | APP CRS 276° | Rwy Idg 3463 TDZE 1013 Apt Elev 1048 |
|--|------------------------|---|

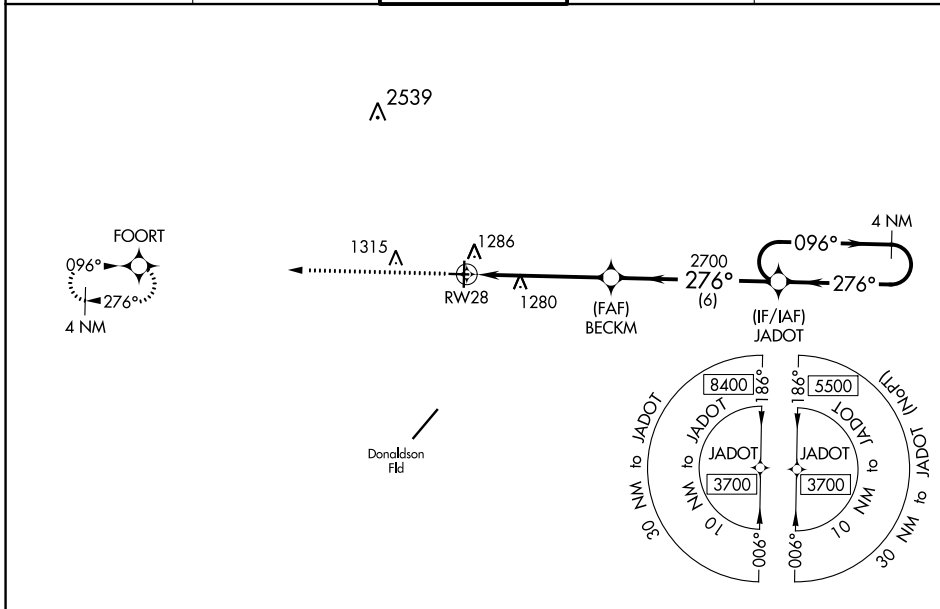
RNAV (GPS) RWY 28

GREENVILLE DOWNTOWN (GMU)

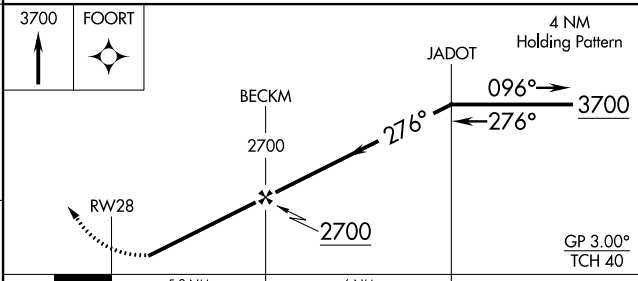
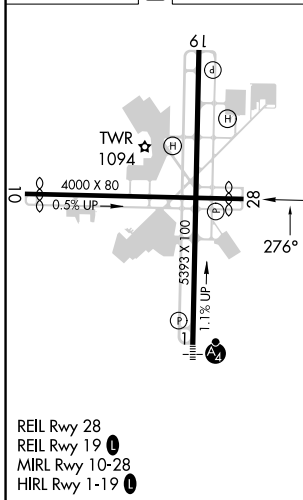
▼ Baro-VNAV NA when using Greer altimeter setting. For uncompensated Baro-VNAV systems, LNAV/VNAV NA below -6°C (22°F) or above 54°C (130°F). DME/DME RNP-0.3 NA.
 ▲ When local altimeter setting not received, use Greer altimeter setting and increase all DA 29 feet and all MDA 40 feet; increase LNAV/VNAV all Cats and LNAV Cats C/D visibility ½ mile. Helicopter visibility reduction below 1 SM NA. Night landing: Rwy 19 NA.

MISSED APPROACH:
Climb to 3700 direct FOORT and hold.

| | | | | |
|--------------------------|---|---|--------------------------|-------------------------|
| ATIS ★ 127.075 | GREER APP CON ★ 118.8 270.275 | GREENVILLE TOWER ★ 119.9 (CTAF) 0 257.7 | GND CON 121.25 | UNICOM 122.95 |
|--------------------------|---|---|--------------------------|-------------------------|



| | | |
|-----------|----------|-----------|
| ELEV 1048 | D | TDZE 1013 |
|-----------|----------|-----------|



| CATEGORY | A | B | C | D |
|-------------------|--------------------|---|---|---|
| LPV DA | 1263-1 | | 250 (300-1) | |
| LNAV/VNAV DA | 1463-1½ | | 450 (500-1½) | |
| LNAV MDA | 1540-1 527 (500-1) | | 1540-1½ 527 (500-1½) | |
| C CIRCLING | 1620-1 572 (600-1) | | 1780-2 732 (800-2) 1860-2¾ 812 (900-2¾) | |