

WAAS CH <b>50199</b> <b>W18A</b>	APP CRS <b>182°</b>	Rwy ldg TDZE Apt Elev	<b>6501</b> <b>145</b> <b>162</b>
--	------------------------	-----------------------------	---

# RNAV (GPS) RWY 18

GREENWOOD-LEFLORE (GWO)

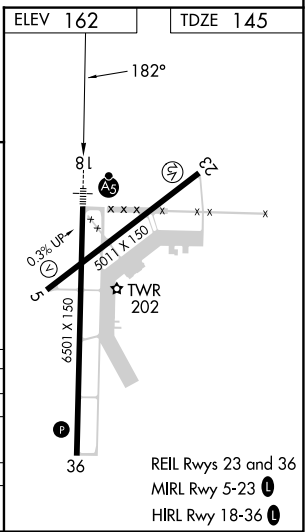
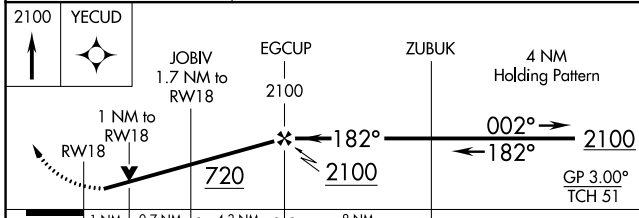
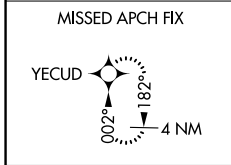
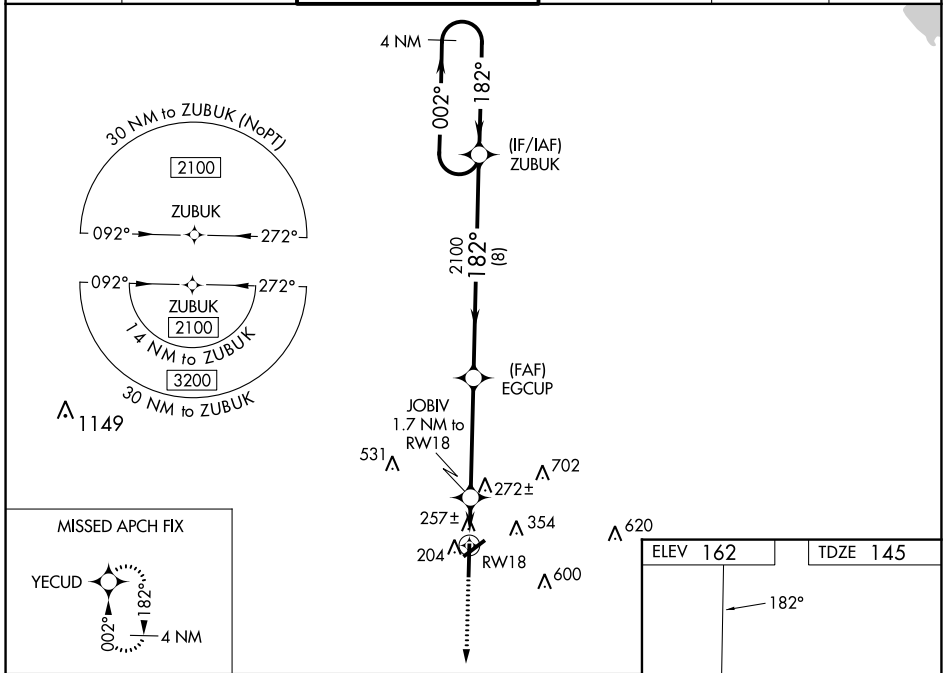
RNP APCH-GPS.

For uncompensated Baro-VNAV systems, LNAV/VNAV NA below -22°C or above 54°C. Baro-VNAV and VDP NA when using Greenville altimeter setting. For inop ALS when using Greenville altimeter setting, increase LPV all Cats visibility to 1½ SM, and LNAV/VNAV all Cats to 1¾ SM, and LNAV Cat A/B to 1 SM, and Cat C/D to 1¾ SM. When local altimeter setting not received, use Greenville altimeter setting: increase LPV DA to 580 feet and visibility ¼ SM, LNAV/VNAV DA to 675 feet and visibility ⅓ SM; increase all MDAS 120 feet and visibility LNAV Cat C/D ¼ SM and Circling Cat C ½ SM. For inop ALS, increase LNAV/VNAV all Cats visibility to 1¾ SM, and LNAV all Cats to 1 SM. Rwy 18 helicopter visibility reduction below ¾ SM NA. Circling Rwy 5, 23 NA at night.

MALSRS  
A5

MISSED APPROACH:  
Climb to 2100 direct YECUD and hold.

ASOS <b>119,975</b>	MEMPHIS CENTER <b>132,5 259,1</b>	GREENWOOD TOWER ★ <b>118,35 (CTAF) 0 367,6</b>	GND CON <b>125,55 373,4</b>	CLNC DEL <b>125,55</b>	UNICOM <b>122,95</b>
------------------------	--------------------------------------	---	--------------------------------	---------------------------	-------------------------



CATEGORY	A	B	C	D
LPV DA		471-¾	326 (400-¾)	
LNAV/VNAV DA		566-1	421 (500-1)	
LNAV MDA		520-¾	375 (400-¾)	
CIRCLING	760-1	598 (700-1)	1000-2½ 838 (900-2½)	1120-3 958 (1000-3)

SC-4, 13 JUN 2024 to 11 JUL 2024

SC-4, 13 JUN 2024 to 11 JUL 2024