

TOLEDO, OHIO

# HI-ILS Y or LOC Y RWY 25

LOC/DME I-BQE <b>108.7</b> Chan <b>24</b>	APCH CRS <b>252°</b>	Rwy ldg <b>10,599</b> TDZE <b>678</b> Arprt Elev <b>684</b>
---	-------------------------	---

[USAF]

EUGENE F KRANZ TOLEDO EXPRESS (KTOL)

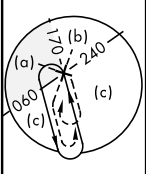
DME required



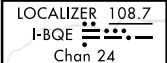
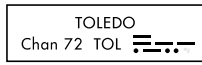
MISSED APPROACH: Climb to 2500 then climbing left turn to 3000 on TOL R-170 to POUDR (TOL R-170/1.5 DME) and hold.

★ When ALS inop, increase RVR to 40, vis to 3/4 mile.  
 ★★ When ALS inop, increase RVR to 50, vis to 1 mile.

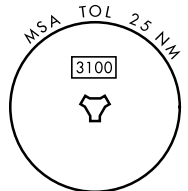
ATIS <b>118.75 290.225</b>	TOLEDO APP CON <b>126.1 317.55</b>	TOLEDO TOWER <b>118.1 285.4</b>	GND CON <b>121.9 348.6</b>	CLNC DEL <b>121.75 348.6</b>	ASR
-------------------------------	---------------------------------------	------------------------------------	-------------------------------	---------------------------------	-----



• 1158  
 Procedure NA for arrival on FWA VORTAC airway radials 077 CW 134.  
 Procedure NA for arrival at ROD VORTAC on V47 southwest bound.



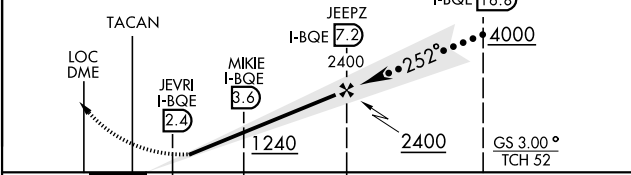
Use I-BQE DME when on the localizer course.



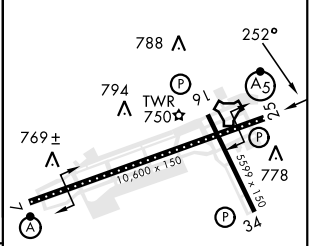
EMERG SAFE ALT 100 NM 3100



VGSI and ILS glidepath not coincident (VGSI Angle 3.00°/TCH 69°)



ELEV 684	TDZE 678
----------	----------



CATEGORY	C	D	E
S-ILS 25*	878-1/2	200	(200-1/2)
S-LOC 25**	1000-1/2	322	(400-1/2)
CIRCLING	1300-1 3/4 616 (700-1 3/4)	1360-2 1/4 676 (700-2 1/4)	1360-2 1/2 676 (700-2 1/2)

HIRL Rwy 7-25  
 MRL Rwy 16-34  
 REIL Rwy 16, 34  
 TDZL/CL Rwy 7  
 Rwy 7 ldg 10,599'  
 Rwy 25 ldg 10,599'

TOLEDO, OHIO

41° 35'N-83° 48'W EUGENE F KRANZ TOLEDO EXPRESS (KTOL)

Amdt 6B 08SEP22

# HI-ILS Y or LOC Y RWY 25

EC-2, 13 JUN 2024 to 11 JUL 2024

EC-2, 13 JUN 2024 to 11 JUL 2024