

MEARZ SEVEN DEPARTURE

INDIANAPOLIS, INDIANA

TOP ALTITUDE:
(JETS) 5000
(PROPS) 3000

RADAR required.

D-ATIS 134.25
 CLNC DEL 128.75 257.8
 CPDLC GND CON 121.9
 INDY TOWER 120.9 257.8
 INDIANAPOLIS DEP CON 124.95 317.8 (EAST)
 119.05 317.8 (WEST)

BOILER
 115.1 BVT
 Chan 98

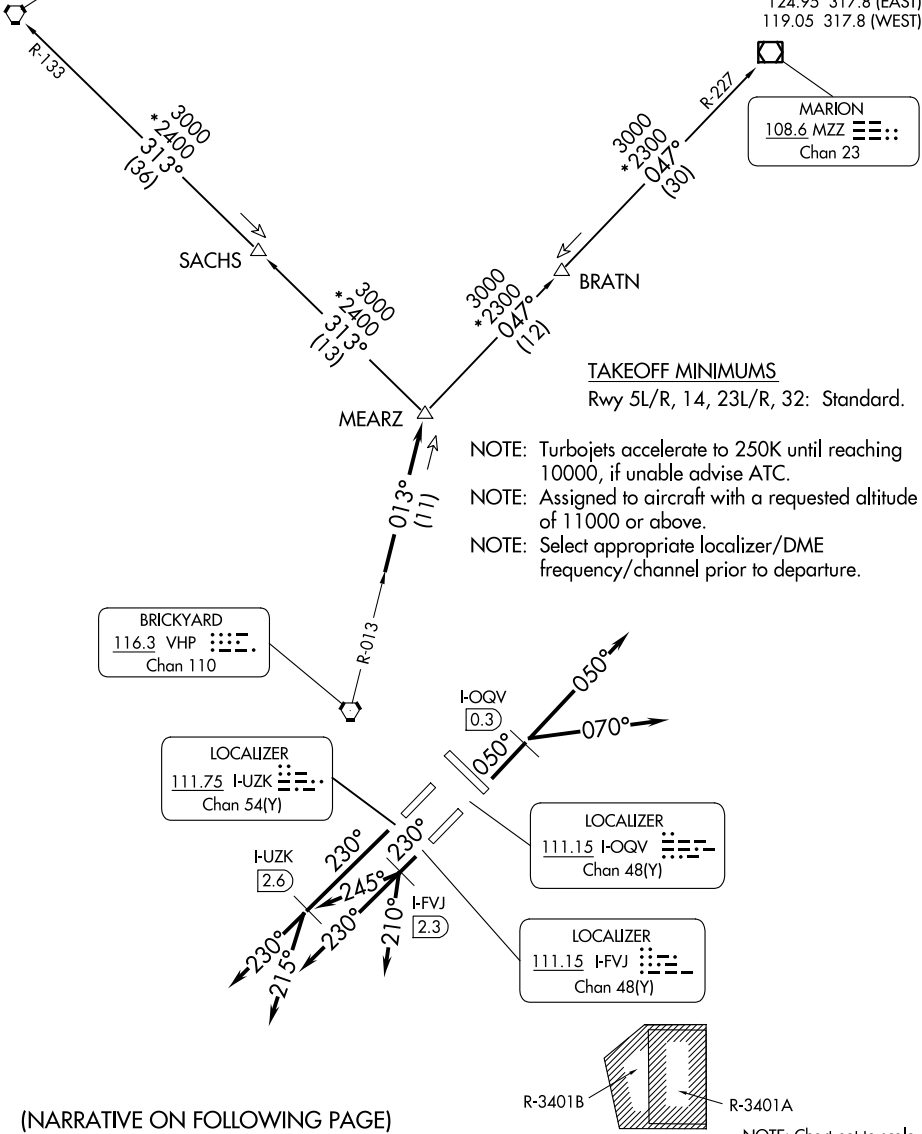
MARION
 108.6 MZZ
 Chan 23

BRICKYARD
 116.3 VHP
 Chan 110

LOCALIZER
 111.75 I-UZK
 Chan 54(Y)

LOCALIZER
 111.15 I-OQV
 Chan 48(Y)

LOCALIZER
 111.15 I-FVJ
 Chan 48(Y)



TAKEOFF MINIMUMS

Rwy 5L/R, 14, 23L/R, 32: Standard.

- NOTE: Turbojets accelerate to 250K until reaching 10000, if unable advise ATC.
- NOTE: Assigned to aircraft with a requested altitude of 11000 or above.
- NOTE: Select appropriate localizer/DME frequency/channel prior to departure.

(NARRATIVE ON FOLLOWING PAGE)

NOTE: Chart not to scale.

EC-2, 13 JUN 2024 to 11 JUL 2024

EC-2, 13 JUN 2024 to 11 JUL 2024