

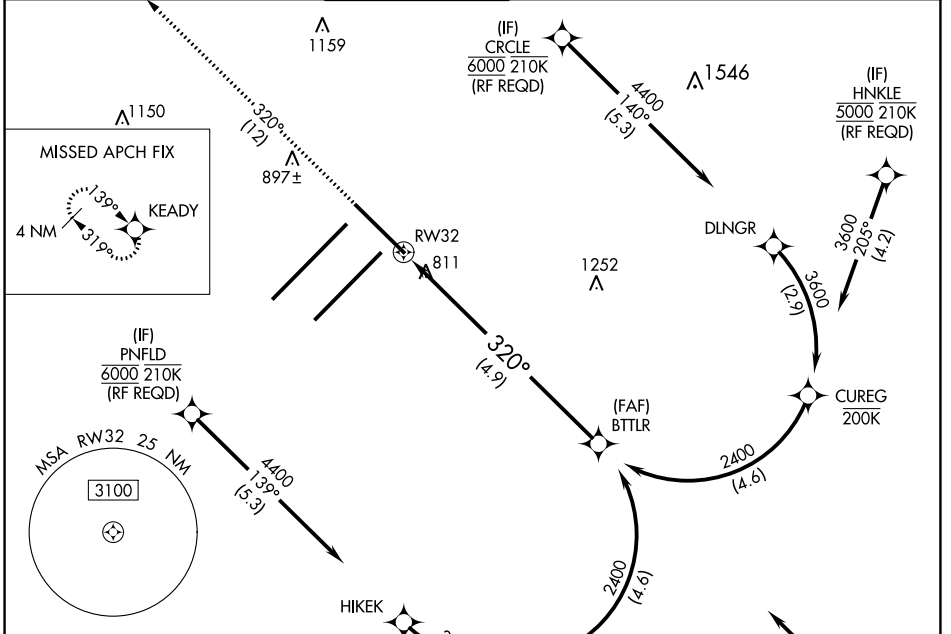
APP CRS 320°	Rwy Idg 7278
	TDZE 793
	Apt Elev 796

RNAV (RNP) Z RWY 32

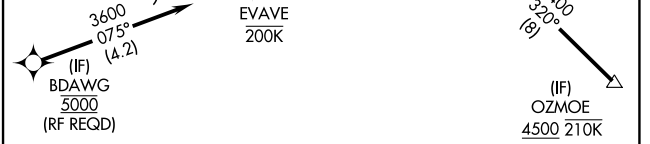
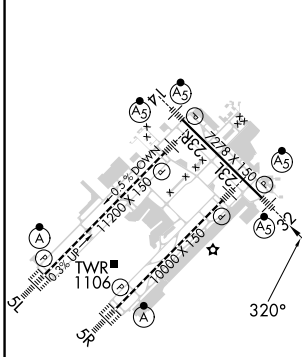
INDIANAPOLIS INTL (IND)

	For uncompensated Baro-VNAV systems, procedure NA below -18°C (2°F) or above 54°C (130°F). GPS required.	MALSR 	MISSED APPROACH: Climb to 3000 on track 320° to KEADY and hold.

D-ATIS 134.25	INDIANAPOLIS APP CON 128.175 317.8	INDY TOWER 120.9 257.8	GND CON 121.9	CLNC DEL 128.75 257.8	CPDLC
-------------------------	--	----------------------------------	-------------------------	---------------------------------	-------



ELEV 796	D	TDZE 793
----------	----------	----------



3000 KEADY VGSi and RNAV glidepath not coincident (VGSi Angle 3.00/TCH 73).	BTTLR 2400 GP 3.00° TCH 53
4.9 NM	

CATEGORY	A	B	C	D
RNP 0.19 DA		1134/30	341 (400-%)	
RNP 0.30 DA		1196/45	403 (400-%)	

HIRL all Rwys
TDZ/CL Rwys 5L and 5R

AUTHORIZATION REQUIRED

EC-2, 13 JUN 2024 to 11 JUL 2024

EC-2, 13 JUN 2024 to 11 JUL 2024