

APP CRS	Rwy Idg	<b>11200</b>
<b>050°</b>	TDZE	<b>747</b>
	Apt Elev	<b>796</b>

# RNAV (RNP) Z RWY 5L

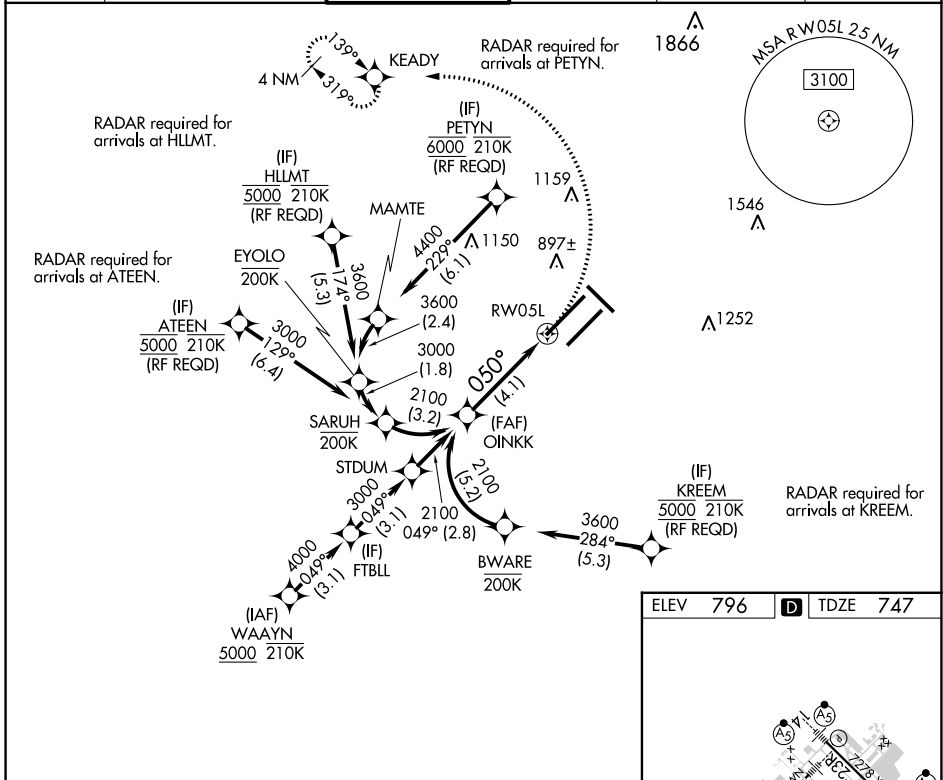
INDIANAPOLIS INTL (IND)

▼ For uncompensated Baro-VNAV systems, procedure NA below -18°C (0°F) or above 54°C (130°F). GPS required. For inop ALS, increase RNP 0.30 all Cats visibility to 1½ SM. Simultaneous approach authorized.

ALSF-2

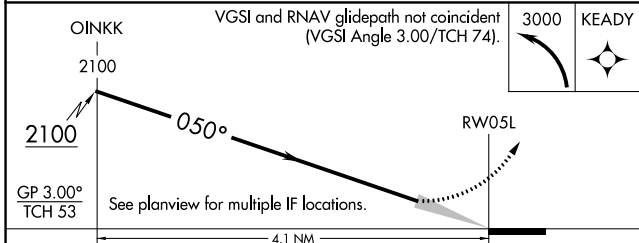
MISSED APPROACH: Climbing left turn to 3000 direct KEADY and hold.

D-ATIS	INDIANAPOLIS APP CON	INDY TOWER	GND CON	CLNC DEL	CPDLC
<b>134.25</b>	<b>128.175 317.8</b>	<b>120.9 257.8</b>	<b>121.9</b>	<b>128.75 257.8</b>	

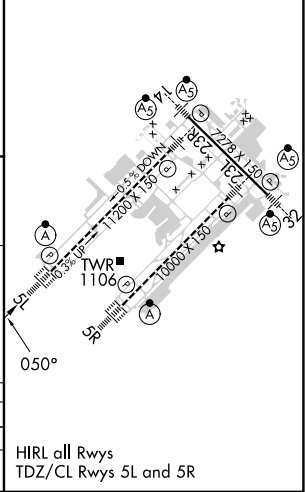


EC-2, 13 JUN 2024 to 11 JUL 2024

EC-2, 13 JUN 2024 to 11 JUL 2024



ELEV	<b>796</b>	<b>D</b>	TDZE	<b>747</b>
------	------------	----------	------	------------



CATEGORY	A	B	C	D
RNP 0.30 DA		1197/60	450 (500-1½)	

**AUTHORIZATION REQUIRED**

HIRL all Rwys  
TDZ/CL Rwys 5L and 5R