

APP CRS	Rwy Idg	10000
050°	TDZE	791
	Apt Elev	796

RNAV (RNP) Z RWY 5R

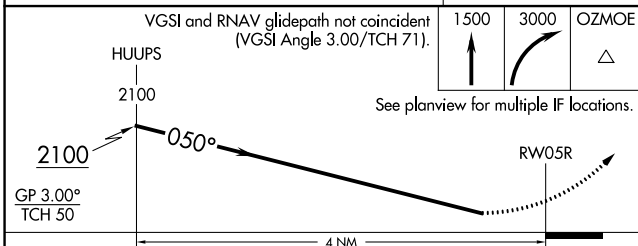
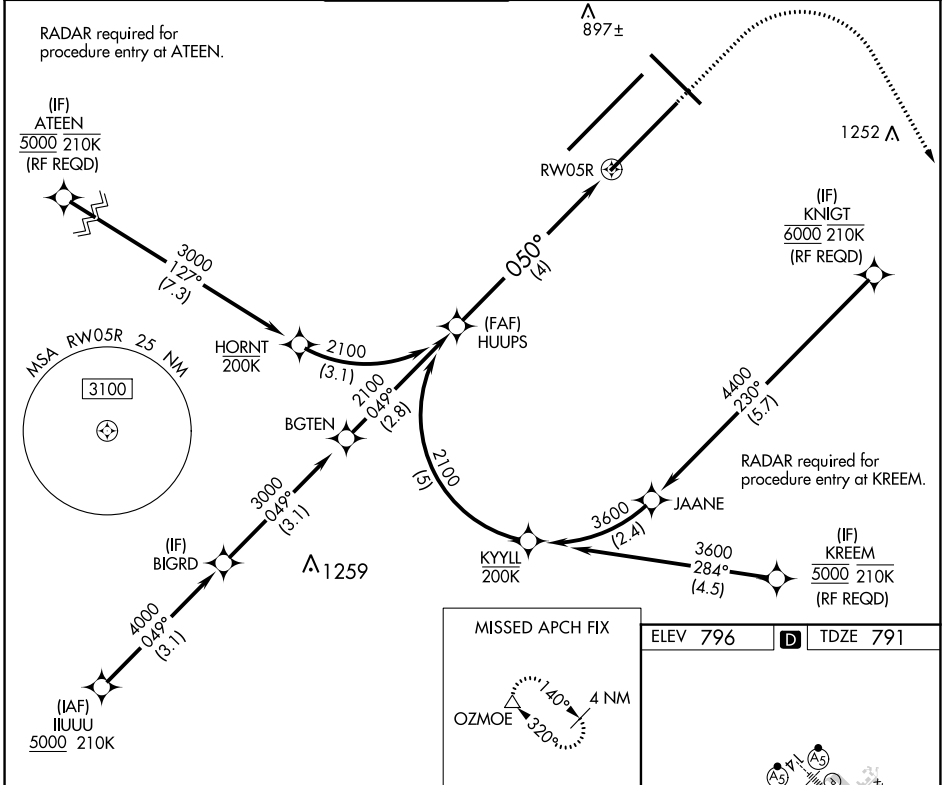
INDIANAPOLIS INTL (IND)

⚠ For uncompensated Baro-VNAV systems, procedure NA below -18°C (0°F) or above 54°C (130°F). GPS required. Simultaneous approach authorized, for arrivals from IUUU only.

ALSF-2

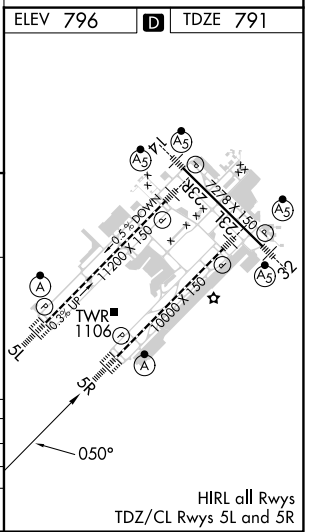
MISSED APPROACH:
Climb to 1500, then climbing right turn to 3000 direct OZMOE and hold.

D-ATIS 134.25	INDIANAPOLIS APP CON 128.175 317.8	INDY TOWER 120.9 257.8	GND CON 121.9	CLNC DEL 128.75 257.8	CPDLC
-------------------------	--	----------------------------------	-------------------------	---------------------------------	-------



CATEGORY	A	B	C	D
RNP 0.11 DA		1174/45	383 (400-7/8)	
RNP 0.30 DA		1271/60	480 (500-1 1/4)	

AUTHORIZATION REQUIRED



EC-2, 13 JUN 2024 to 11 JUL 2024

EC-2, 13 JUN 2024 to 11 JUL 2024